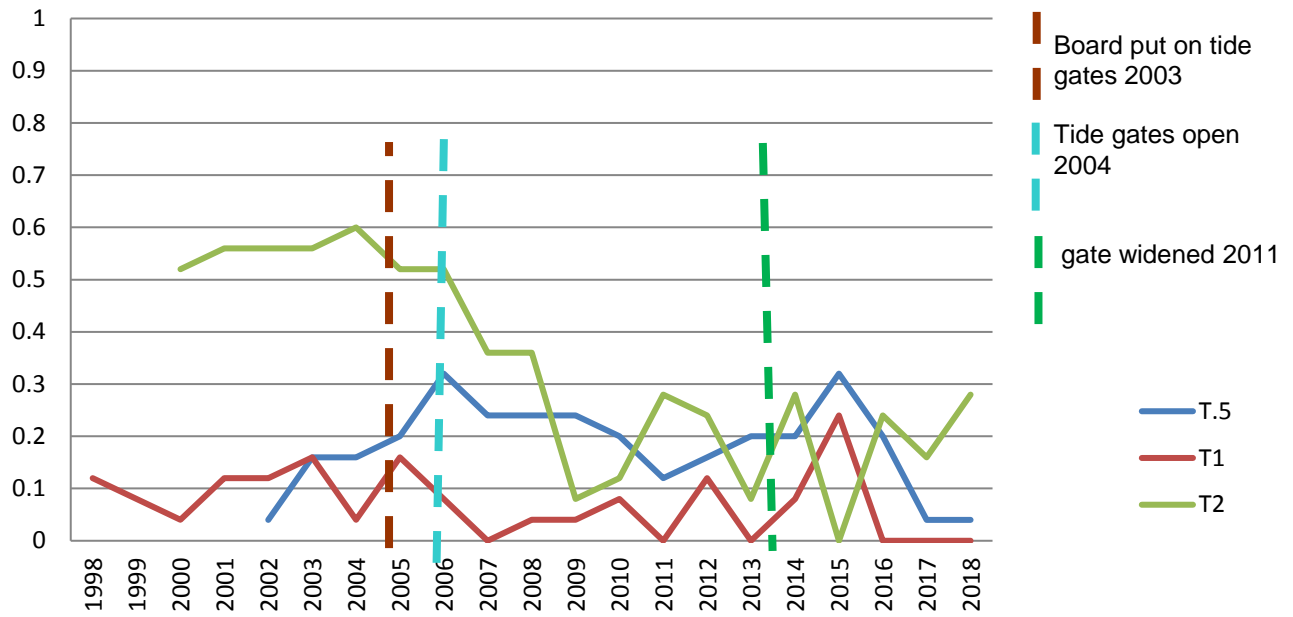
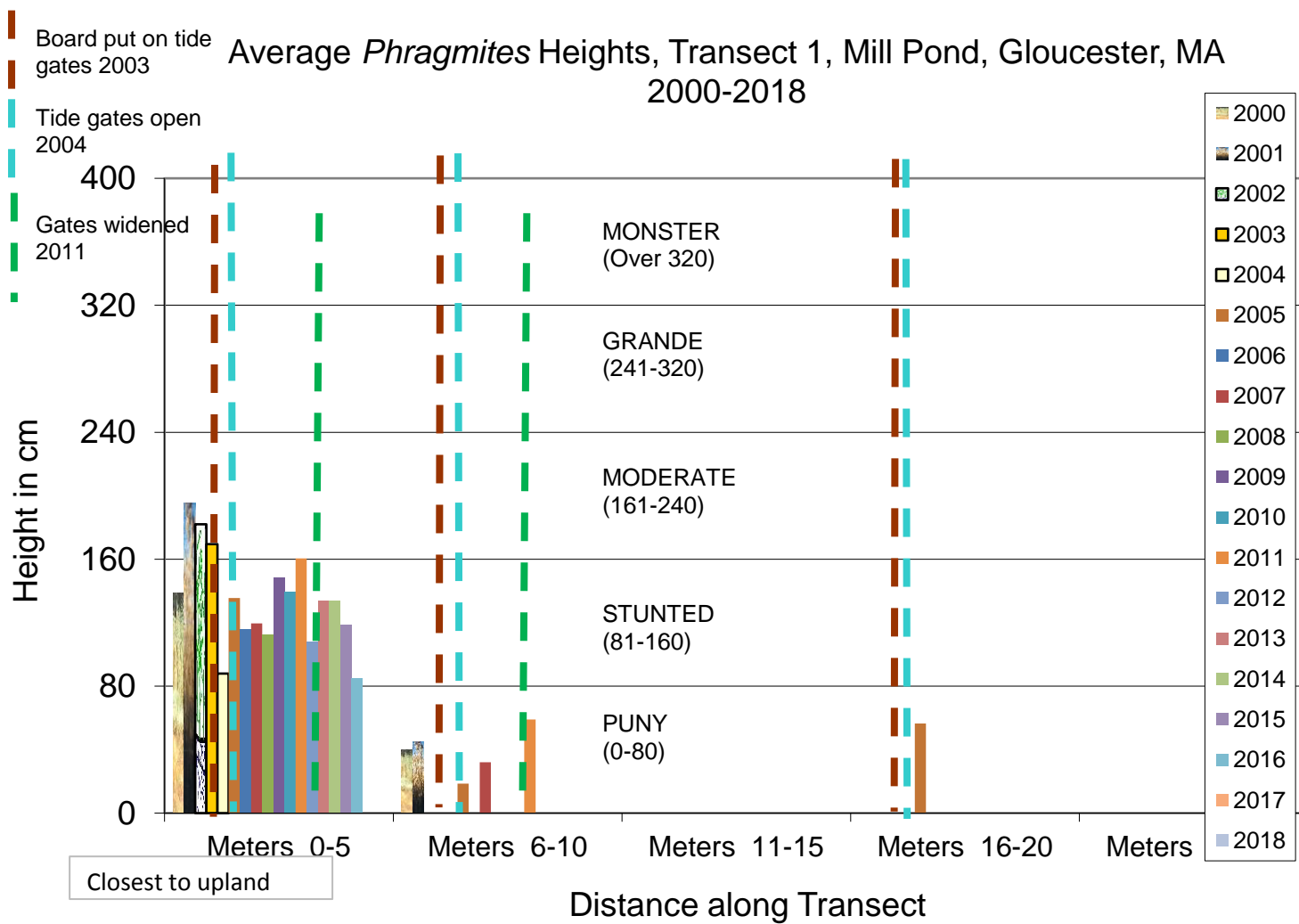


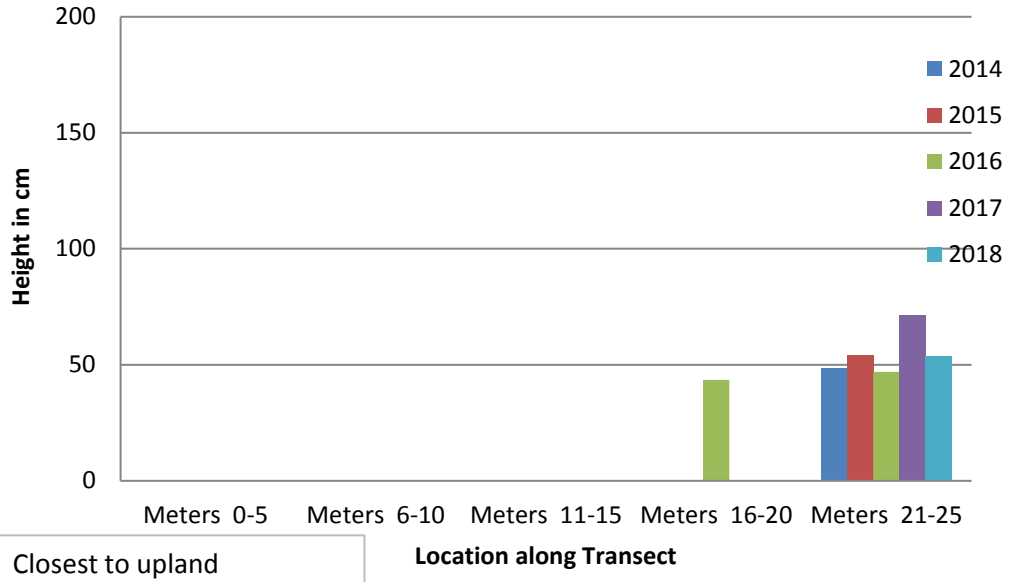
Mill Pond Percent *Phragmites* Monoculture



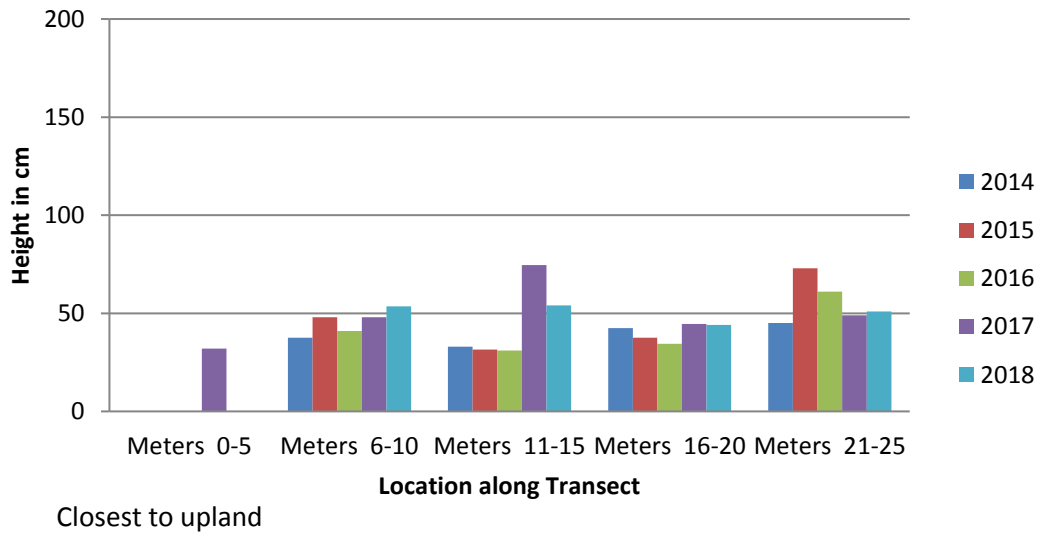
Average *Phragmites* Heights, Transect 1, Mill Pond, Gloucester, MA 2000-2018



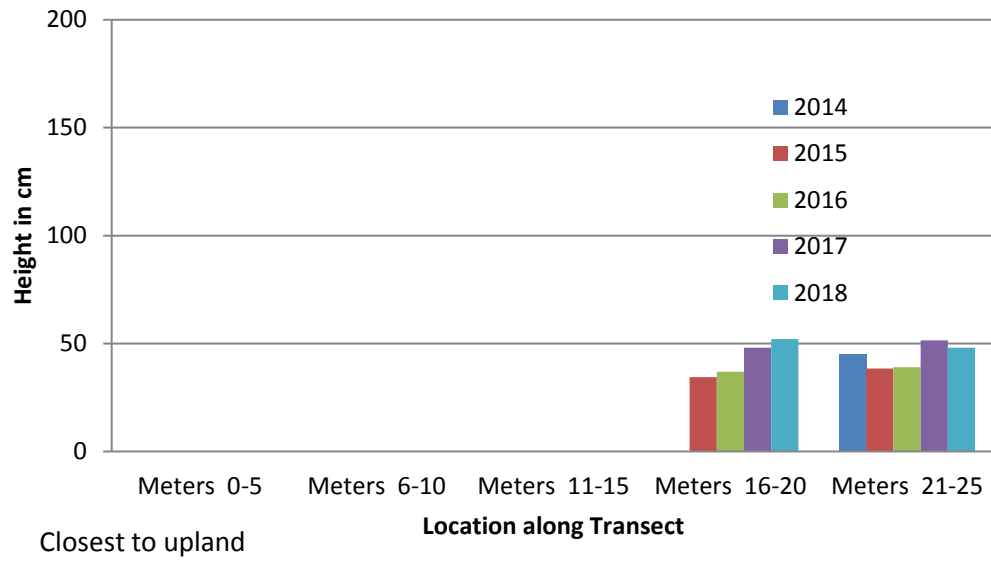
Saltmarsh Cordgrass (*Spartina alterniflora*) Heights T .5 Mill River, Gloucester 2014-2018



Saltmarsh Cordgrass (*Spartina alterniflora*) Heights T 1 Mill River, Gloucester 2014-2018



Saltmarsh Cordgrass (*Spartina alterniflora*) Heights T 2 Mill River, Gloucester 2014-2018



Ma Mass Audubon Salt Marsh Science Project
 Long Range *Phragmites* Study
 Location: Gloucester, Mill Pond
Soft Peat Soil
B=burnt spring 2000

Transect 2: Mill Pond

**This was burned Spring 2000
 burned Fall 2007**
 (before 11/13 after Sept)

Observers and dates

2000		03
2001	11/6/00 Lodge	4
2002	10/8/01, LD, NS	4
2003	Duff	3
2004	9/7/04, Duff/Munson	04
2005	8/29/05, Duff/Janson	
2006	Duff	
2010	Duff & Thompson	
2017	Duff/ Drew Essex Tech	

tide gates open 2004 and beyond

2007 Duff and Wilbur
 2008 Duff
 Boards on gate 2003
 Tide gates opened 2004
 Tide gates widened 2011
 2009 Duff and Hee
 2010 Duff, Stewart, Barthelemy
 2013 Duff, Cobliegh
 2014 MackKelvey/Duff
 2015 Duff
 2016 Duff 2017 Duff and Drew

SPECIES

tide gates open 2004 and beyond.

1 METER SEGMENTS

of intervals present in %

Year	upland end										marsh end										# of intervals present in %	
	B	B	B	B	B	B	B	B	B	B	B	B	B	B	B	B	B	B	B	B		
Spring 2000																					0	
<i>Phragmites</i>	2000	1	1	1	1	1	1	1	1	1	1	1	1	1	1	1	1	1	1	1	16	64%
<i>Phragmites australis</i>	2001	1	1	1	1	1	1	1	1	1	1	1	1	1	1	1	1	1	1	1	16	64%
	2002	1	1	1	1	1	1	1	1	1	1	1	1	1	1	1	1	1	1	1	17	68%
	2003	1	1	1	1	1	1	1	1	1	1	1	1	1	1	1	1	1	1	1	16	64%
	2004	1	1	1	1	1	1	1	1	1	1	1	1	1	1	1	1	1	1	1	16	64%
is immature	2005	1	1	1	1	1	1	1	1	1	1	1	1	1	1	1	1	1	1	1	18	72%
	2006	1	1	1	1	1	1	1	1	1	1	1	1	1	1	1	1	1	1	1	20	80%
Fire in 2007	2007	1	1	1	1	1	1	1	1	1	1	1	1	1	1	1	1	1	1	1	16	Whole 64%
	2008	1	1	1	1	1	1	1	1	1	1	1	1	1	1	1	1	1	1	1	19	76%
	2009	1	1	1	1	1	1	1	1	1	1	1	1	1	1	1	1	1	1	1	18	72%
	2010	1	1	1	1	1	1	1	1	1	1	1	1	1	1	1	1	1	1	1	16	64%
	2011	1	1	1	1	1	1	1	1	1	1	1	1	1	1	1	1	1	1	1	13	52%
	2012	1	1	1	1	1	1	1	1	1	1	1	1	1	1	1	1	1	1	1	15	60%
	2013	1	1	1	1	1	1	1	1	1	1	1	1	1	1	1	1	1	1	1	14	56%
	2014	1	1	1	1	1	1	1	1	1	1	1	1	1	1	1	1	1	1	1	12	48%
	2015	1	1	1	1	1	1	1	1	1	1	1	1	1	1	1	1	1	1	1	11	44%
	2016	1	1	1	1	1	1	1	1	1	1	1	1	1	1	1	1	1	1	1	10	40%
	2017	1	1	1	1	1	1	1	1	1	1	1	1	1	1	1	1	1	1	1	10	40%
	2018																				0	0%
	2019																				0	0%
Salt Marsh Hay	2000										1	1	1	1	1	1	1	1	1	1	12	48%
<i>Spartina patens</i>	2001										1	1	1	1	1	1	1	1	1	1	11	44%
	2002										1	1	1	1	1	1	1	1	1	1	11	44%
	2003										1	1	1	1	1	1	1	1	1	1	11	44%
	2004										1	1	1	1	1	1	1	1	1	1	10	40%
	2005										1	1	1	1	1	1	1	1	1	1	12	48%
	2006										1	1	1	1	1	1	1	1	1	1	7	28%
	2007										1	1	1	1	1	1	1	1	1	1	14	56%
	2008										1	1	1	1	1	1	1	1	1	1	13	52%
	2009										1	1	1	1	1	1	1	1	1	1	13	52%
	2010										1	1	1	1	1	1	1	1	1	1	16	64%
	2011										1	1	1	1	1	1	1	1	1	1	15	60%
	2012										1	1	1	1	1	1	1	1	1	1	12	48%
	2013	Data Missing									1	1	1	1	1	1	1	1	1	1	14	56%
	2014										1	1	1	1	1	1	1	1	1	1	14	56%
	2015										1	1	1	1	1	1	1	1	1	1	14	56%
	2016										1	1	1	1	1	1	1	1	1	1	14	56%
	2017										1	1	1	1	1	1	1	1	1	1	15	60%
	2018																				0	0%
	2019																				0	0%
Glasswort	2008																				0	0%
<i>(Salicornia europaea)</i>	2009										1	1	1	1	1	1	1	1	1	1	8	32%
	2010										1	1	1	1	1	1	1	1	1	1	0	0%
	2011																				0	0%
	2012										1										1	4%
	2013	Data Missing																			0	0%
	2014																				0	0%
	2015																				0	0%
	2016																				0	0%
	2017										1	1			1	1		1		6	24%	
	2018																				0	0%
	2019																				0	0%

Why Two Glassworts?

<i>Rosa sp.</i>	2008	1																																1	4%	
	2009																																	0	0%	
	2010																																	0	0%	
T2: Mill Pond	2011																																	0	0%	
	2012																																	0	0%	
	2013	1	1	1		1	1																											5	20%	
	2014	1	1	1	1	1																												3	12%	
	2015	1	1	1																														2	8%	
	2016		1			1																												0	0%	
	2017																																	0	0%	
	2018																																	0	0%	
	2019																																	0	0%	
Blackberry <i>Rubus sp.</i>	2008	1	1																															2	8%	
	2009	1	1																															2	8%	
	2010																																		0	0%
	2011	1																																	1	4%
	2012	1	1	1	1	1																												5	20%	
	2013																																		0	0%
	2014	1																																	1	4%
	2015	1	1	1																														3	12%	
	2016																																		0	0%
	2017																																	0	0%	
Pokeweed <i>Phytolacca americana</i>	2008		1																																1	4%
Saltmarsh Aster <i>Aster subulatus</i>	2005																																		10	40%
	2006																																		9	36%
	2007																																		0	0%
	2008																																		0	0%
	2009																																		1	4%
	2010																																		0	0%
	2011																																		0	0%
	2012																																		0	0%
	2013																																		0	0%
	2014																																		0	0%
	2015																																		0	0%
	2016																																		0	0%
	2017																																		0	0%
Uknown Upland Grass	2010			1	1																														2	8%
	2011																																		0	0%
	2012																																		0	0%
	2013																																		0	0%
	2014																																		0	0%
	2015																																		0	0%
	2016																																		0	0%
	2017	1																																	1	4%
Dead	2004																																		9	36%
*see file for % dead	2005																																	0	0%	
Grape Vine	2017			1	1	1																													3	12%
	2018																																		0	0%

Mill Pond Transect 2
upland end 1 2 3 4 5 6 7 8 9 10 11 12 13 14 15 16 17 18 19 20 21 22 23 24 25 marsh end
1 METER SEGMENTS