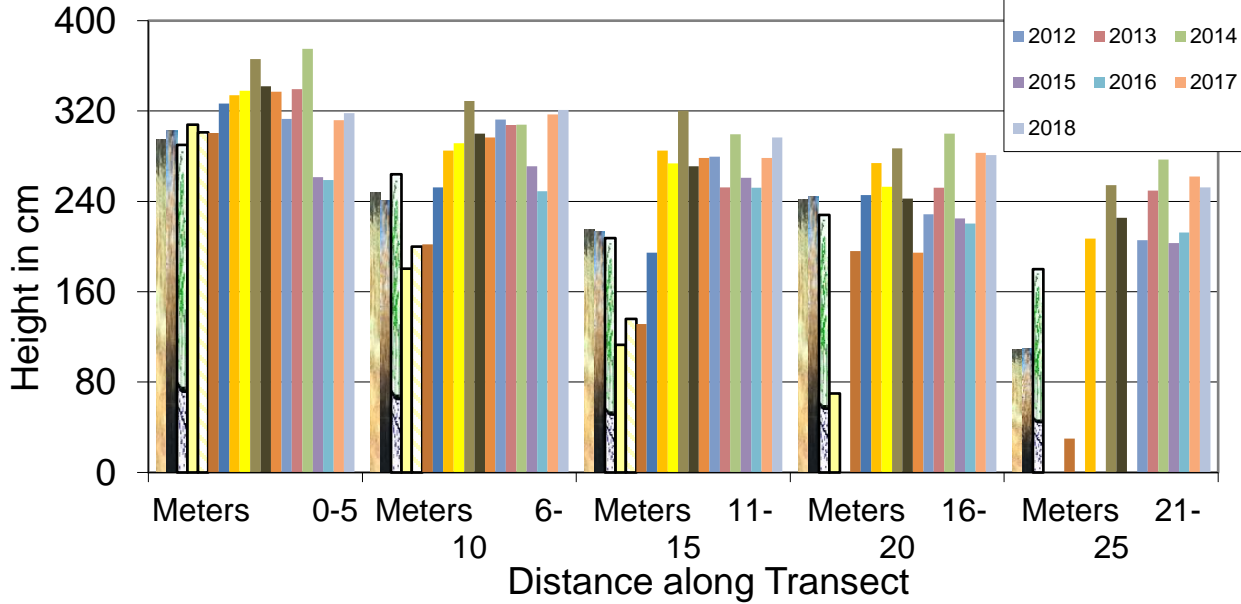


Average *Phragmites* Heights Transect # 1, Railroad Bed, Salisbury MA, 2000-2018

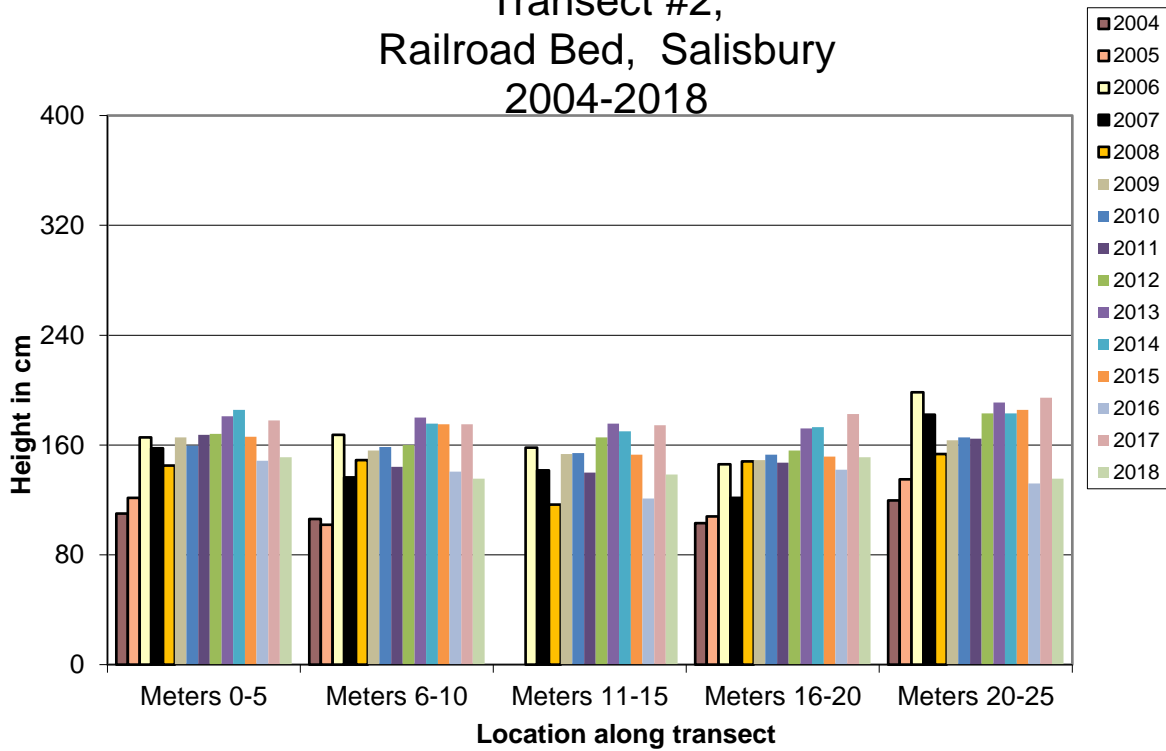
Tidegate was stuck closed in winter 2003-2004.

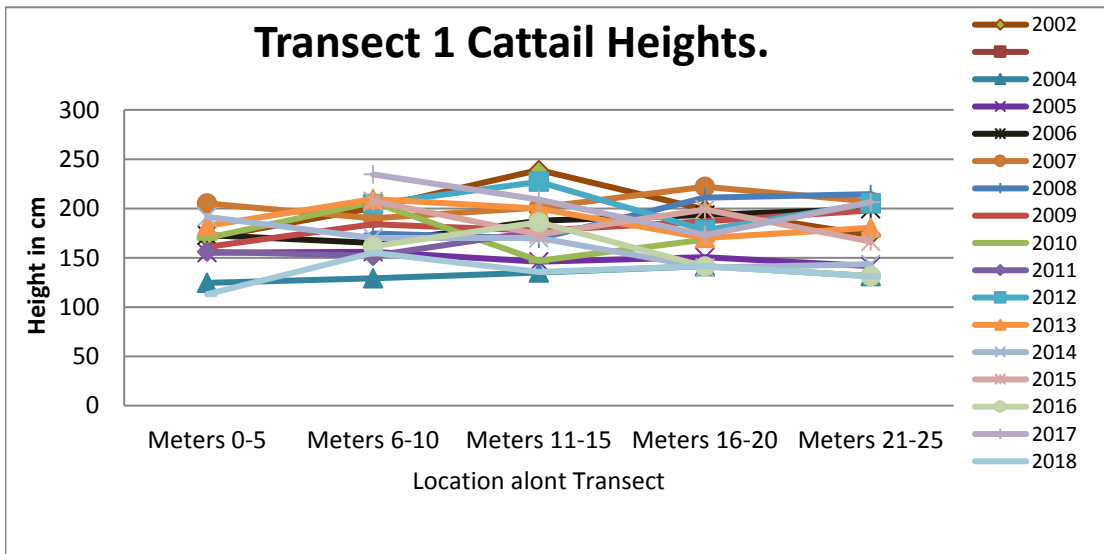
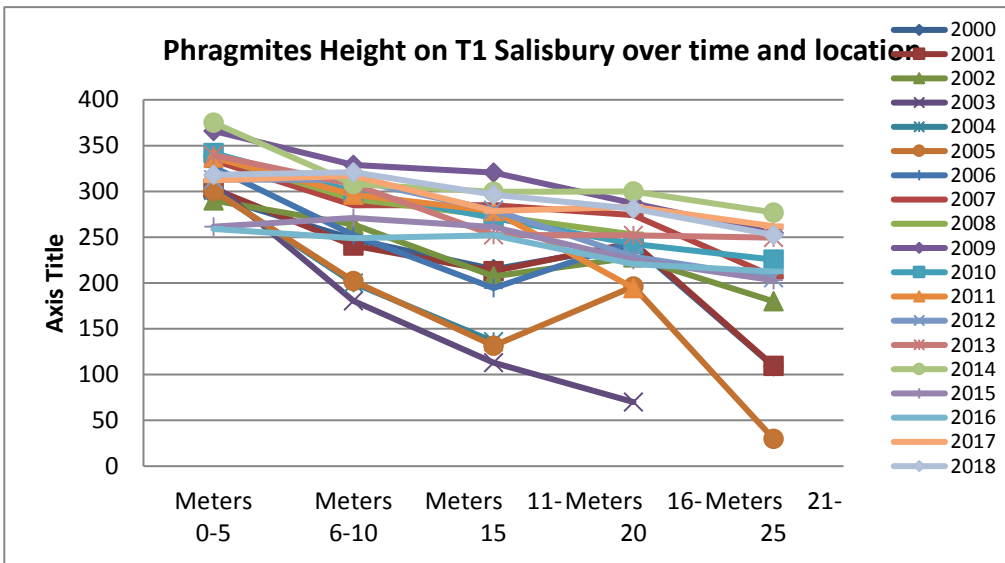
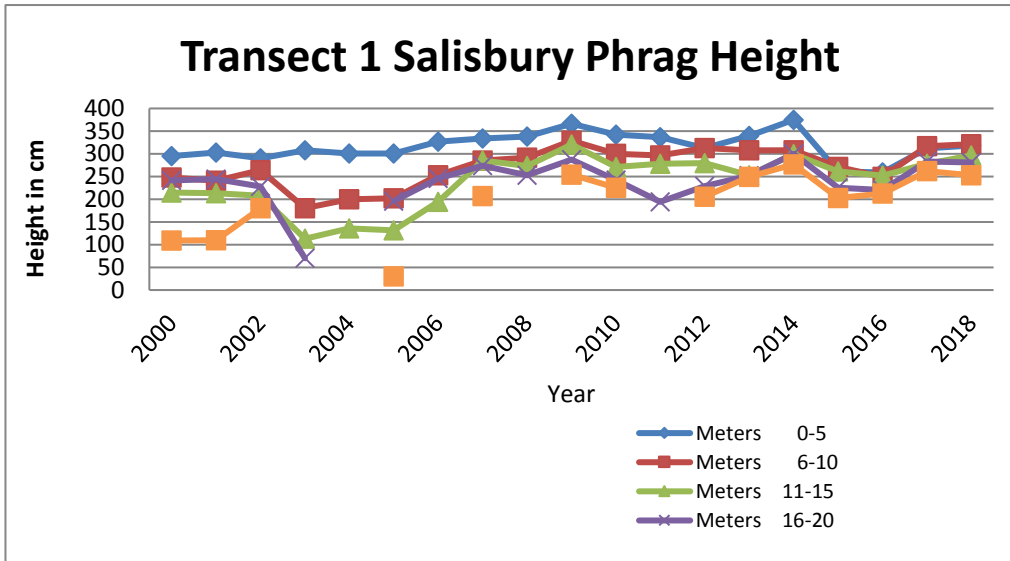
RR bed washed out spring 2005

Tide Gates Widened in 2014



Average Cattail Heights, Transect #2, Railroad Bed, Salisbury 2004-2018





Transect 1 Cattail Heights.

