

# ready, set, Go Outside!

**At the Water's Edge.** Go to the edge of any stream, pond, marsh, or other wetland and what might you find? A bunch of cool aquatic creatures! Like all animals, they need to breathe, eat, move, and hide. Unlike other animals, aquatic creatures need to do these things in, on, and under water.

## Parent/Teacher Note

**Skills Learned:** Observation and comparison; camouflage; physiological adaptations; predation; food chains; life cycles; interrelationships

## Wetland Habitat Hunt

Look around the edge of a wetland. Can you find these things?

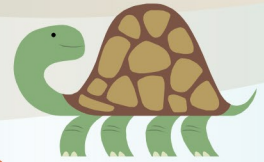
- Something growing at the edge of the water
- Something flying on the surface of the water
- Something swimming in the water
- Something flying above the water



## Get Immersed in Wetlands

Visit different types of wetlands and see what you can discover.

- Draw or photograph a plant or animal and show one way it adapts to living in water
- Compare two different wetlands—how are they alike and how are they different?
- Try to find a place where water enters and exits the wetland
- Walk along the edge of the wetland; what plants do you see?



## Kids: Show us your stuff!

Send your photo, poem, or drawing of something you discovered at the water's edge for possible use on our website or in print. Please include your name, age, grade, phone number, and city or town. We will notify you if your submission is selected. Submissions will become the property of Mass Audubon and will not be returned.

E-mail

[connections@massaudubon.org](mailto:connections@massaudubon.org)

or mail

Connections,

Mass Audubon,

208 South Great Road,

Lincoln, MA 01773