

Worcester

2023



# BROAD MEADOW BROOK NATURE CAMP

Discover. Explore. Be Outside.





# Welcome to Broad Meadow Brook Nature Camp

At Broad Meadow Brook Nature Camp in Worcester, youth can tap into their natural curiosity. Counselors and staff strive to create an inclusive community where our campers, ages 4.5-16, are encouraged to be themselves as they investigate different habitats, ecosystems, and wildlife species at the sanctuary and beyond.

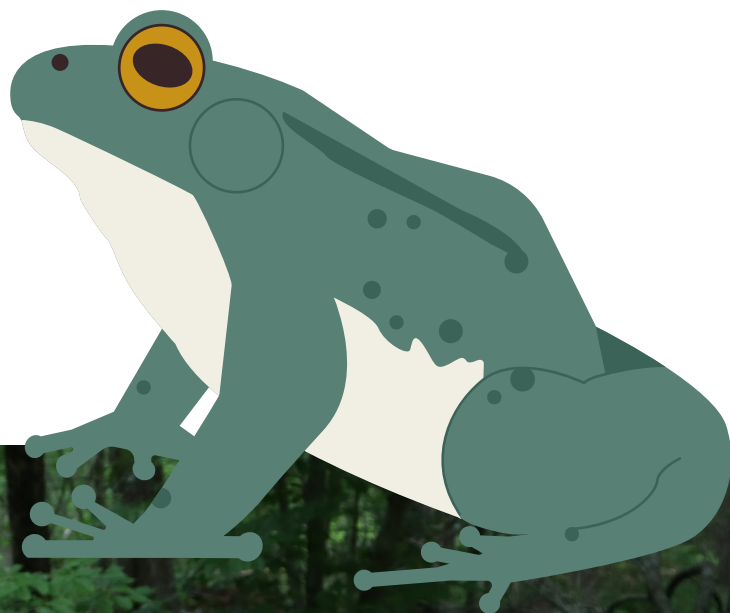
Most of our days are spent outside exploring our surroundings and getting dirty. Camp fun will include outdoor exploration, noncompetitive games, songs, and stories. While no two weeks will be the same, some of our favorite camper activities will take place every week.

To ensure that as many children as possible have the opportunity to explore and make memories at camp this summer, families may register each camper for no more than four weeks of camp. We are happy to place you on a waitlist for additional weeks and will open up spaces to waitlisted campers on May 1.

## A DAY AT CAMP

8:00 am	Before Camp Program (optional)
9:00 am	Camper drop-off & choice time
9:30 am	Opening Circle
9:45 am	Activity Block #1
10:30 am	Snack
10:45 am	Activity Block #2
12:00 pm	Lunch & free play time
1:00 pm	Activity Block #3
2:00 pm	Activity Block #4
3:00 pm	Closing Circle
3:15-3:45 pm	Camper pick-up
3:30-5:30pm	After Camp Program (optional)

**Activity Blocks may include hiking, nature exploration, crafts, games, and more.**





## OUR CAMP STAFF

Our dedicated and knowledgeable staff is made up of professional teachers and naturalists, college students, and junior counselors. Staff members are all age 18 or older and junior counselors are 16 and older. This specialized team works to foster a sense of community among campers and build connections with nature. Counselors are carefully selected based on their maturity, enthusiasm, teaching experience, natural history knowledge, and deep commitment to engaging campers with nature. All staff undergo background checks, are certified in CPR and first aid, and receive training in health and safety procedures, child development, natural history, and environmental education best practices.

## OUR CAMP DIRECTOR

Lisa Carlin (she/her) has been the camp director since 2006 and LOVES camp! She attended overnight camp as a child, where she later became a counselor. She brings her love and passion for being outdoors and exploring the natural world to all the campers and staff at Broad Meadow Brook. Lisa believes that all kids are amazing and wants to help campers be the best they can be alongside her talented and caring staff. She can't wait to see you and your kids at camp this summer.

## OUR COMMITMENT TO DIVERSITY & INCLUSION

At Mass Audubon Camps, we strive to create a safe, inclusive, and caring camp environment where each person is respected and supported in their learning and growth. We believe that diversity—both in nature and in our human communities—is essential to strength, resilience, and innovation, and we are committed to recognizing the unique contributions of each community member.

## COVID-19 SAFETY

The health and welfare of our campers and staff remains our highest priority. We feel confident that the success of Mass Audubon Camps in designing and offering safe summers of camping for the past three years will guide us into another great summer in 2023. See pages 6 for more information.

## SLIDING SCALE PRICING

Mass Audubon is committed to ensuring that every family that wants their child to experience summer camp has the opportunity to do so. A sliding scale model helps us work toward that goal through an easy and dependable process for families. If cost is still a barrier under the sliding scale structure, financial assistance is also available. See page 7 to learn more.



## FOR MORE INFORMATION

Call 508-753-6087

Email [bmbrookcamp@massaudubon.org](mailto:bmbrookcamp@massaudubon.org)

Visit [massaudubon.org/broadmeadowcamp](https://massaudubon.org/broadmeadowcamp)





# Before & After Camp Options

## BEFORE CAMP: 8:00–9:00 am

Campers will spend their pre-camp morning engaged in quiet games and crafts. Please note: Breakfast is not provided. Parents should ensure that campers have eaten a hearty breakfast at home; you can bring a small snack.

## AFTER CAMP: 3:30–5:30 pm

Campers will have a snack (brought from home) and make crafts, go hiking, or play games. Available for all campers except Bear Cubs.

Campers are typically away from the building until 4:45 pm. Please plan pick-up between 4:45 and 5:30 pm.



“ We love that camp is an inclusive, welcoming environment and that kids get to spend most of their time outside. ”  
— Camp Parent

## Camp Family Appreciation Night

Wednesday, August 2  
7:00–8:00 pm

Come celebrate camp! Bring your chair and your family—be ready to sing and participate in the fun. Camp staff will entertain you and your campers with songs and silly skits!





# THREE-DAY NATURE CAMP

Tuesday–Thursday | 9:00 am–1:00 pm  
June 27–29, July 11–13, July 25–27, August 1–3,  
August 15–17

This three-day mini-camp will introduce your child to the wonders of Broad Meadow Brook! Each day will have a different nature-related theme that will guide our explorations and activities. Arts and crafts, hiking, games, snack, and lunch (brought from home) will be a part of every day.

## Bear Cubs

Ages 4.5–6

Counselor-to-Camper Ratio: 1 to 5



# ONE-WEEK NATURE CAMP

Monday–Friday | 9:00 am–3:30 pm  
Weekly sessions, June 19–August 25

Experience the wonder of nature at Broad Meadow Brook. Explore animal adaptations, climate change, birding, and how to respect and care for the Earth. Discover different habitats and wildlife around the sanctuary, play games, and make crafts, all while getting dirty and learning as you go!

## Grasshoppers

Ages 5–6

Counselor-to-Camper Ratio: 1 to 5

## Flickers

Ages 7–8

Counselor-to-Camper Ratio: 1 to 8

## Mighty Oaks

Ages 9–11

Counselor-to-Camper Ratio: 1 to 10

## Coyotes

Ages 12–15

June 19–23, July 3–7, July 17–21, August 7–11, August 21–25

Counselor-to-Camper Ratio: 1 to 10







# SPECIALTY CAMPS

## Scientists of the Future Ages 13–15

**July 17–21, August 7–11 | 9:00 am–3:45 pm**

Calling all environmentally-minded teens! Spend an entire week exploring outside doing authentic field work to collect and analyze data that scientists use to understand more about wildlife habitats, water resources, sustainability, and climate change. The week will be filled with outdoor discoveries and extended hikes, science experiments, and learning how to use science tools and laboratory equipment. We will plan to travel in our van to explore local colleges and meet local scientists during our week together. Along the way, we will also explore career opportunities in environmental science and sustainability.

*Campers may attend both weeks; topics will be similar, but the activities will be different.*

## Teen Adventure Ages 14–16

**July 10–14 | 9:00 am–5:00 pm**

Explore the Wilds of Worcester County and beyond! We will embark on various adventures, such as exploring the Quabbin Reservoir, learning about wastewater treatment, and much, much more! A specific itinerary will be distributed before the camp session. We'll finish the week with an overnight to Wildwood, Mass Audubon's overnight camp in Rindge, NH, where campers can swim, kayak, try the ropes course, and more!

*Overnights take place on Wednesday and Thursday at Wildwood. Campers will be transported in a Mass Audubon van.*

## Exploring Mass Audubon Ages 12–16

**August 14–18 | 9:00 am–5:00 pm**

Travel to different Mass Audubon wildlife sanctuaries to explore and learn about varied habitats and ecosystems, including rivers, mountains, and meadows. Team building, birding, animal identification, hiking, and more will be included.

*This is a field trip-based session during which we will travel together in a Mass Audubon van.*

## Counselors-in-Training (CIT) Ages 14–16

**9:00 am–3:30 pm**

Learn what it takes to be a camp counselor. Gain leadership skills, hands-on training, and develop a lesson plan, which you will present at camp. First-year CITs will attend the training session and choose between two and four weeks of camp to help lead sessions. CITs who have previously completed training may choose between three and five weeks of camp to lead sessions.

Contact the Camp Director, Lisa Carlin, at [bmbrookcamp@massaudubon.org](mailto:bmbrookcamp@massaudubon.org) or 508-753-6087 ext. 5013 to request an application.

**New CITs will pay for their training week, June 26 – June 30, equivalent to one week of Nature Camp.** See the sliding scale for One-Week Nature Camp on page 7 for pricing. Returning CITs have no fee.



# REGISTRATION INFORMATION

## TO REGISTER FOR CAMP

Call 508-753-6087

Visit [massaudubon.org/broadmeadowcamp](https://massaudubon.org/broadmeadowcamp)

## REGISTRATION POLICY

While no two weeks will be the same, some of our favorite camper activities will take place every week. To provide equitable access to camp for as many families as possible, we request that you register for no more than four weeks of full-day camp or two weeks of half-day camp. We are happy to place you on a waitlist for extra weeks and will open up spaces to waitlisted campers on May 1.

## REGISTRATION CONFIRMATION

A confirmation containing important documents and information will be sent once your camper's registration has been processed.

## DEPOSIT

A nonrefundable deposit is required to register for camp as follows: \$50/camper/session. The deposit will be applied to your camp tuition and cannot be transferred to another camper, family, or camp location. If you are registering after May 15, payment in full is required (unless a payment plan has been established with the Camp Director).

## REFUND POLICY

A full refund, minus the nonrefundable deposit, is provided to camp families who cancel in writing on or before May 15. After May 15 no refund is available. Deposits are not transferable, and refunds are not given for participant dismissal, failure to attend, absence, or sick days. If we must cancel a session, you will receive a full refund.

## MEMBERSHIP & DISCOUNTS

Mass Audubon members at the Family level or above receive a discounted rate. To qualify, your membership must be current through your camper's last session, and you must be the parent, grandparent, or legal guardian of the camper being enrolled. Membership can be purchased or renewed at the time of registration.

## IMPORTANT DEADLINES

All camp forms, waivers, and the balance of your camp tuition are due by May 15. If registering after May 15, payment in full is required and a specific camp form deadline will be set for you. A camper cannot attend camp and their spot is not guaranteed until all forms, waivers, and payments are completed (or a payment plan has been established).

## CAMPER REQUIREMENTS

Campers are expected to be able to follow all COVID-19 safety protocols, which will be determined by the start of camp based on the latest guidelines from the Massachusetts

Department of Public Health. Visit [massaudubon.org/camps](https://massaudubon.org/camps) for the most up-to-date information about COVID-19 safety at Mass Audubon Camps.

All campers must follow stated behavior expectations and safety rules. To ensure a successful camp experience, please discuss any pertinent information regarding your child's needs with the Camp Director. We strive to make camp a great experience for all, and we can accommodate on a case-by-case basis. The Camp Director reserves the right to dismiss a camper when, in their judgment, the camper's behavior interferes with the rights of others or violates the camp's safety and behavior policies. In such cases, no refunds will be provided. If you have any questions regarding your child's ability to participate in our camp program, please contact the Camp Director.

## CAMP LICENSE

Our camp complies with the regulations of the Massachusetts Department of Public Health (105 CMR 430) and is licensed by the Worcester Board of Health.

## ACA ACCREDITATION

We are proud to be accredited by the American Camp Association. Developed exclusively for the camp industry, this nationally recognized program focuses on program quality, health and safety, management, and camp operations.

## CAMP POLICY REQUESTS

You may request copies of our background check, healthcare, discipline, bullying, and grievance policies at any time.

## SESSION TRANSFERS

Session transfer requests will be honored if there is space available.

## BUDDY REQUESTS

One buddy request per camper will be honored when possible. Both campers must be the same age and both must request each other. All buddy requests must be made in writing at least one week prior to the first day of camp. Please indicate on your registration form if you would like your camper to be placed with a friend of the same age.

## FOR MORE INFORMATION

Lisa Carlin, Camp Director  
Broad Meadow Brook Nature Camp  
414 Massasoit Road  
Worcester, MA 01604-3546  
508-753-6087 ext. 5013  
Fax: 781-259-2455  
[bmbrookcamp@massaudubon.org](mailto:bmbrookcamp@massaudubon.org)  
[massaudubon.org/broadmeadowcamp](https://massaudubon.org/broadmeadowcamp)



## FINANCIAL AID

We believe connection with the natural world should be available to all. If finances are getting in the way of a summer at any Mass Audubon Camp, financial assistance is available based on demonstrated financial need and available funds. Scholarships are limited to one session per child; however, all applications are considered and will be accepted on a rolling basis. Payment plan options are also available. Please visit [massaudubon.org/campforms](https://massaudubon.org/campforms) to download a financial aid application.

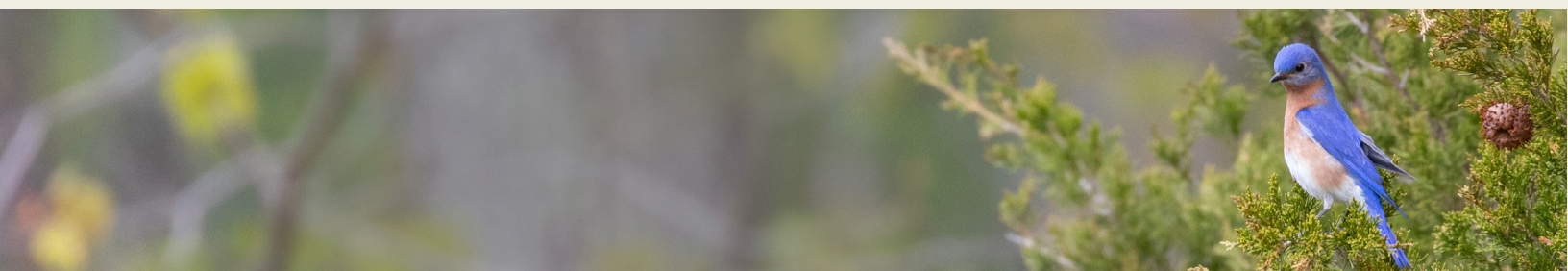


## SLIDING SCALE PRICING

Under the sliding scale model, every family will enroll for camp at a tuition rate based on their annual gross income. At registration, you will have the opportunity to select the pricing tier that best fits your family's gross income. If you select Tiers 1-4, you will be asked to upload income verification documentation at a later time. Registrants at Tier 5 do not need to provide income verification. A deposit is due at the time of registration; the final balance and all paper-work are due by May 15. If cost is still a barrier under the tiered structure, financial aid is also available.

	Tier 1 <i>member/nonmember</i>	Tier 2 <i>member/nonmember</i>	Tier 3 <i>member/nonmember</i>	Tier 4 <i>member/nonmember</i>	Tier 5 <i>member/nonmember</i>
<b>Family Adjusted Gross Income</b>	<b>&lt;\$50,000</b>	<b>\$50,000–\$74,999</b>	<b>\$75,000–\$99,999</b>	<b>\$100,000–\$174,999</b>	<b>No income verification required</b>
<b>Three-day Nature Camp</b>	\$38/\$52	\$95/\$130	\$124/\$169	\$162/\$221	\$190/\$260
<b>One-week Nature Camp</b>	\$84/\$98	\$210/\$245	\$273/\$319	\$357/\$417	\$420/\$490
<b>Scientists</b>	\$95/\$109	\$238/\$273	\$309/\$354	\$404/\$463	\$475/\$545
<b>Teen Adventure Exploring Mass Audubon</b>	\$100/\$114	\$250/\$285	\$325/\$371	\$425/\$485	\$500/\$570
<b>Before Camp (per week)</b>	\$8/\$10	\$20/\$25	\$26/\$33	\$34/\$43	\$40/\$50
<b>Before Camp (Bear Cubs)</b>	\$4/\$6	\$10/\$15	\$13/\$20	\$17/\$26	\$20/\$30
<b>After Camp (per week)</b>	\$15/\$19	\$38/\$48	\$49/\$62	\$64/\$81	\$75/\$95

\*To qualify for the Member rate, you must be a current Mass Audubon member at the Family level or above and be the parent, grandparent, or legal guardian of the camper being enrolled. You may join or renew your membership at the time of registration.





## MORE FOR MEMBERS

Mass Audubon membership benefits don't end when the summer's over: Membership includes year-round free admission to our statewide network of wildlife sanctuaries, where the whole family can explore and enjoy the outdoors. Members also enjoy great savings on nature programs and gift shop purchases. Learn more at [massaudubon.org/membership](https://massaudubon.org/membership).

## WE'RE HIRING!

For information on employment opportunities, visit [massaudubon.org/jobs](https://massaudubon.org/jobs).

“The counselors, the experience, *EVERYTHING!* You have nailed the fun factor mixed with education. Bravo to you;)”

—Camp Parent

## KIDS TO CAMP SCHOLARSHIP FUND

Help make camp attainable for even more kids with a gift to the Kids to Camp Fund.

**DETAILS AT**  
[massaudubon.org/kidstocamp](https://massaudubon.org/kidstocamp)



**Mass Audubon** is the largest nature-based conservation organization in New England. Founded in 1896 by two women who fought for the protection of birds, Mass Audubon carries on their legacy by focusing on the greatest challenges facing the environment today: the loss of biodiversity, inequitable access to nature, and climate change.

With the help of our 160,000 members and supporters, we protect wildlife, conserve and restore resilient land, advocate for impactful environmental policies, offer nationally recognized education programs for adults and children, and provide endless opportunities to experience the outdoors at our wildlife sanctuaries. Explore, find inspiration, and take action at [massaudubon.org](https://massaudubon.org).



**There's more to explore at Wildwood,  
Mass Audubon's overnight camp in  
New Hampshire:**

- Overnight Camp, ages 7-15
- Teen Adventure Trips, ages 14-17
- Environmental Leadership for Teens, ages 16-17
- Family Camp, all ages!

Visit [massaudubon.org/wildwood](https://massaudubon.org/wildwood) or call 866-627-2267 to learn more.

