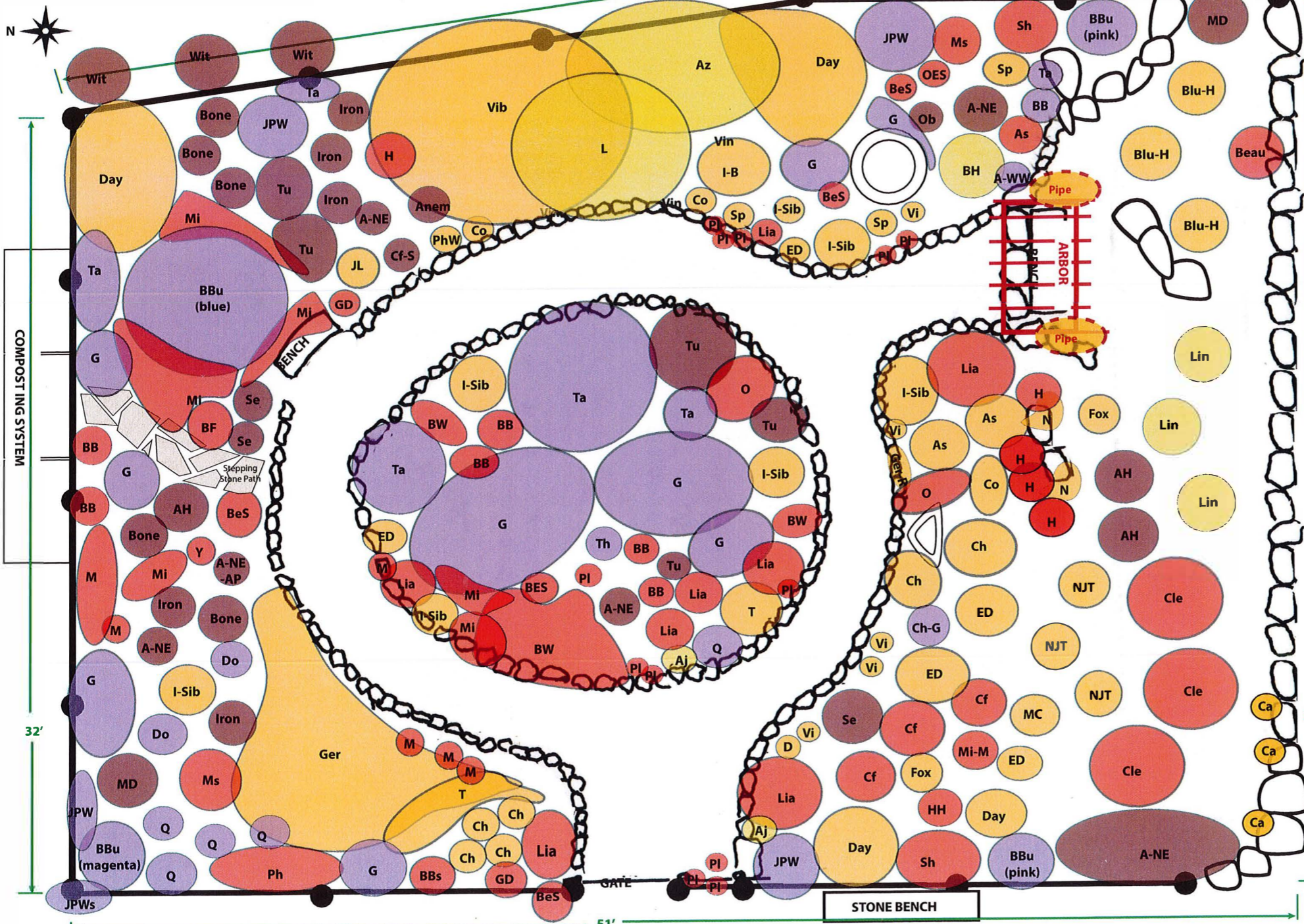


Butterfly Garden at Stony Brook Wildlife Sanctuary

October 2016



PERENNIALS

- A-NE - Aster, NE (*Symphyotrichum novae-angliae*)
- A-NE-AP - Aster, NE 'Alma Plotschke' (*Symphyotrichum novae-angliae*)
- A-WW - White Wood Aster (*Eurybia divaricata*)
- AH - Anise Hyssop 'Blue Fortune' (*Agastache*)
- Aj - Ajuga (*Ajuga reptans*)
- Anem - Anemone 'September Charm' (*Anemone*)
- As - Astilbe
- Az - Azalea
- BB - Bee Balm (*Monarda didyma*)
- BBs - Spotted Bee Balm (*Monarda punctata*)
- BBu - Butterfly Bush (*Buddleja davidii*)
- Beau - Beautybush (*Kolkwitzia amabilis*)
- BeS - Black-eyed Susan (*Rudbeckia hirta*)
- BF - Blanket Flower (*Gaillardia*)
- BH - Bleeding Heart (*Lamprocapnos (Dicentra) spectabilis*)
- Blu-H - Highbush Blueberry (*Vaccinium corymbosum*)
- Bone - Boneset (*Eupatorium perfoliatum*)
- BW - Butterfly Weed (*Asclepias tuberosa*)
- Ca - Cactus, Prickly Pear (*Opuntia humifusa*)
- Ch - Chives (*Allium schoenoprasum*)
- Ch-G - Garlic Chives (*Allium tuberosum*)
- Cf - Purple Coneflower (*Echinacea purpurea*)
- Cf-S - Coneflower 'Sombbrero Salsa Red' (*Echinacea*)
- Cle - Clethra (*Clethra alnifolium*)
- Co - Columbine (*Aquilegia*)
- D - Dianthus
- Do - Curly Dock (*Rumex crispus*)
- Day - Daylily (*Hemerocalus fulva*)
- ED - Early Daisy (*Bellis perennis*)
- Fox - Foxglove (*Digitalis*)
- G - Goldenrod (*Solidago*)
- Ger - Geranium (*Geranium sanguineum*)
- Ger-R - Robert Geranium (*Geranium robertianum*)
- GI - Gloriosa Daisy (*Rudbeckia hirta*)
- H - Hosta
- Ho - Hollyhock (*Alcea*)
- I-B - Bearded iris
- I-Sib - Siberian iris / Iron - New York Ironweed (*Vernonia noveboracensis*)
- JL - Jacob's Ladder (*Polemonium*)
- JPW - Joe-Pye Weed (*Eutrochium novae-angliae*)
- JPWs - Spotted Joe-Pye Weed (*Eutrochium maculatum*)
- L - Lilac
- Lia - Gayfeather/Liatris (*Liatris spicata*)
- Lin - Spicebush (*Lindera benzoin*)
- M - Common Milkweed (*Asclepias syriaca*)
- MC - Maltse Cross (*Lychnis chalcidonica*)
- Mi - Mint (*Mentha*)
- Mi-M - Mountain mint (*Pycnanthemum virginianum*)
- MD - Montauk Daisy (*Nipponan-ternum nipponicum*)
- Ms - Swamp Milkweed (*Asclepias incarnata*)
- N - Stinging Nettle (*Urtica dioica*)
- NJT - New Jersey Tea (*Ceanothus americanus*)
- O - Oregano (*Origanum vulgare*)
- OES - Ox-Eye Sunflower (*Heliopsis helianthoides*)
- Ob - Obedient Plant (*Physostegia virginiana*)
- Pipe - Pipevine (*Aristolochia macrophylla*)
- Ph - Phlox (*Phlox paniculata*)
- PhW - Woodland Phlox (*Phlox divaricata*)
- PI - English Plantain (*Plantago lanceolata*)
- Q - Wild Quinine (*Parthenium integrifolium*)
- Se - Sedum (*Hylotelephium X*)
- Sh - Shasta Daisy (*Leucanthe-mum X*)
- Sp - Spiderwort (*Tradescantia X purpurea*)
- St-L - Lesser stitchwort (*Stellaria graminea*)
- T - Tickseed, threadleaf (*Coreopsis verticillata*)
- Ta - Tansy (*Tanacetum vulgare*)
- Th - Bull Thistle (*Cirsium vulgare*)
- Tu - Pink Turtlehead (*Chelone lyonii*)
- Vi - Violet (*Viola sororia*)
- Vib - Hobblebush Viburnum (*Viburnum lantanoides*)
- Vin - Creeping Myrtle (*Vinca minor*)
- Wit - Witchhazel (*Hamamelis virginianum*)
- Y - Yarrow (*Achillea millefolium*)

Spring		Summer	
Early summer		Late Summer	
		Fall	