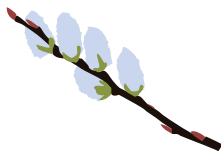


OUTDOOR ALMANAC

3

The furry, light-gray flowers of **pussy willow** burst from their buds.



4

Black Bears are emerging from their winter sleep and looking for food. Bears have excellent memories, so if you live in an area with bears, take down your bird feeders before the bears visit them.

7

Late winter is a great time to look for ducks. Along the coast you can find Common Eider, Harlequin Duck, scoters, and Long-tailed Duck. In open freshwater habitats look for Wood Duck, Gadwall, Ring-necked Duck, and Common and Hooded Merganser.

10

Listen for the distinctive quacking of **Wood Frogs** in the evening as they gather at vernal pools. They are the first amphibians to emerge in spring and often congregate on pools still partially covered with ice.



12

Silver, red, and sugar maples are flowering. Maple flowers are wind pollinated and have no petals but these tiny flowers are beautiful nonetheless.

14

American Woodcock nuptial flights begin about this time, as the snow melts back in open fields. Around sunset listen for the peent call and the whistle of wings.

16

Skunk cabbages, among the first plants to emerge in spring, appear in wetlands. Skunk cabbage is often the first green food eaten by beavers emerging from their lodges and a winter diet of bark from stored branches.



17

The first warm (40°F), rainy night will bring out the **salamanders** as they migrate from their winter burrows to vernal pools to mate. They spend only a short time at the pools and, soon after mating, head back to the uplands.



20

Vernal equinox: first day of spring. Night and day are of equal length.

22

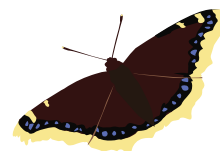
Woodpeckers drill on dead trees both for food and to make nest holes. Pileated Woodpeckers, our largest woodpecker, make large, oblong holes as they follow the tunnels of carpenter ants, which are their favorite food.

26

Look and listen for tom turkeys gobbling and displaying. Their heads turn brilliant red and blue, they fan and waggle their tails, and drag their wings across the ground as they strut back and forth. When you find displaying toms, look around to find the hen, who is usually nearby but often hidden from view.

27

Mourning Cloak butterflies overwinter as adults in tree crevices and beneath loose bark, emerging on warm days in early spring.



28

The **Full Worm Moon** got its name from the hatching and movement of both caterpillars and earthworms as the temperatures warm.



30

Tree Swallows return. Look for them scouting for nest boxes or tree cavities as breeding season begins.

