

# 2018 Annual Report

---

Growing Nature Heroes  
at Every Age



Mass Audubon

For the members & supporters of Mass Audubon



## Dear friends & supporters,

When nature heroes come together, what they can accomplish is simply amazing. They can fight for and get environmental legislation passed. They can protect rare habitats and create wildlife corridors. They can

encourage young kids to connect with nature and enable college students to pursue careers in the environment.

We recognize that today, more than ever, the stakes are high and that it's critically important to enlist the help of nature heroes across the Commonwealth. Environmental safeguards are being rolled back, conservation is underfunded across the country, and climate change looms large. But, there is hope. And, that hope is in the people, like you, who can and will do something to ensure a resilient, healthy, and even more beautiful world.

Jared Chase, our outgoing Chair of the Board of Directors, is an excellent example of someone making a difference. Under his leadership, we have implemented a new Strategic Plan, launched an initiative to become a more diverse and inclusive organization, opened the Tidmarsh Wildlife Sanctuary in Plymouth, and welcomed thousands of new members and supporters across the state. He leaves Mass Audubon a stronger, more capable organization, and we are grateful for his being our "Chief Nature Hero" during his six-year tenure as Chair.

As you read through this report, I hope you recognize it reflects the progress you have helped make happen. Thank you for your commitment and for being a part of this work. It is essential. It is exciting. It is empowering. And, your help is critical in ensuring that we all succeed.

Sincerely,

Gary Clayton | President



"I see my time as Chair of the Board at Mass Audubon as an investment that paid me multiple dividends, including a sense of pride in all that we have accomplished together. But, if I have learned anything, it is that we can only achieve our goal of protecting the nature of Massachusetts by working together. As I step down as Chair, I will not step away from Mass Audubon. Rather, I will roll up my sleeves and get to work again. Because I know the future is in good hands—ours."

Jared Chase | Outgoing Chair, Board of Directors  
Pictured with wife Ann Chase

15,000  
VOLUNTEERS  
in 2018



917 2017

994 2018

8%

**INCREASE**

in Leadership Friends –  
Mass Audubon's Highest  
Membership Level



**5% INCREASE** ↑

in Children in Mass Audubon Nature Preschool Programs

**12% INCREASE**

in People Including Mass Audubon in Their Wills or Estate Plans

249 2017

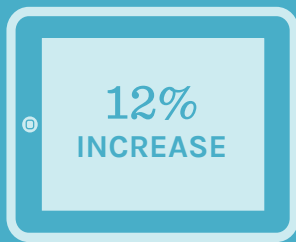
280 2018

# 2018 | By the Numbers

*Growing Nature Heroes at Every Age*

**125,000**

**MASS AUDUBON**  
Members & Supporters



**12% INCREASE**

**121,277**

**FOLLOWERS**  
on Social Media



**14% INCREASE** ↑

**123,979**

**CHILDREN**  
Participating in  
Mass Audubon  
School Programs

**1.5 million**

**VISITORS**  
to Mass Audubon's  
Website

**11,000**

**CHILDREN**  
Attending  
Camp Programs



# Fiscal Year 2018 Highlights

With a deep sense of gratitude for our members, contributors, staff, program participants, and volunteers, we are pleased to present a summary of Mass Audubon's strong financial results for fiscal year 2018:

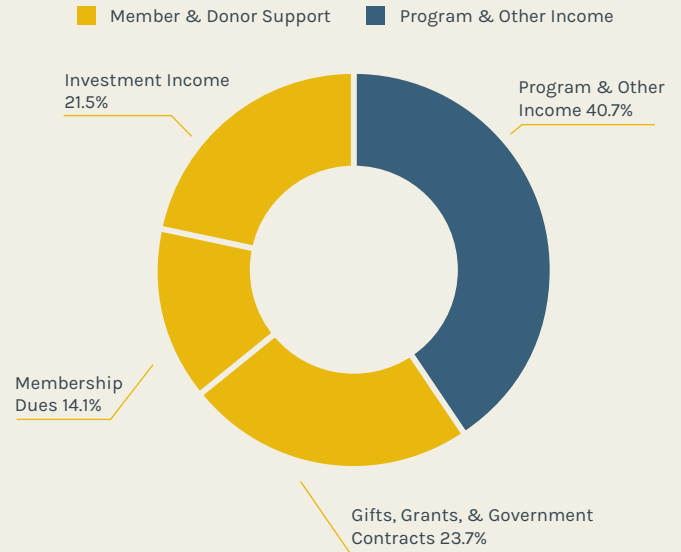
- An all-time income record for all four major income categories, signaling a strong commitment to our natural world
- An expertly managed and balanced budget for 15 years in a row
- \$4.1 million contributed to enhance our facilities and acquire additional sanctuary land, so we can expand opportunities to explore and learn
- \$10 million in program revenue, reflecting a robust offering of experiences for children, families, and adults to discover and expand their nature connection
- \$141 million endowment value, helping ensure our stability, focus, and ability to respond to the challenges ahead



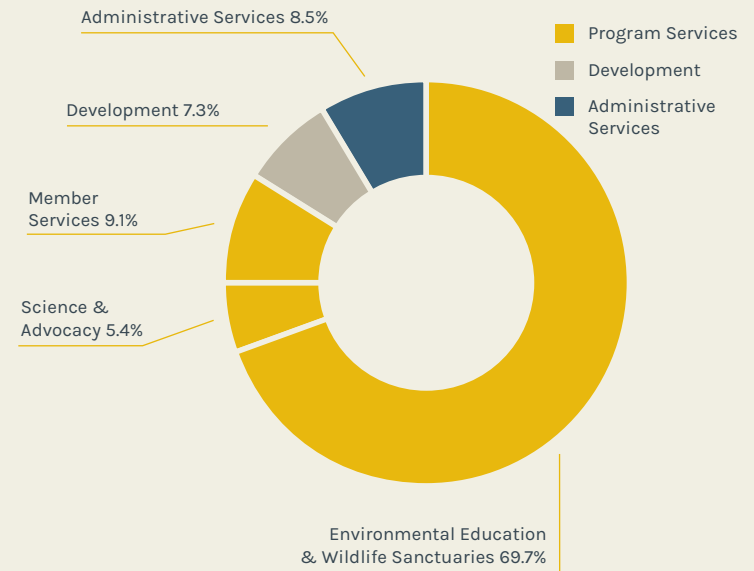
We are committed to being as transparent, ethical, and efficient as possible with the funds that are entrusted to us. A complete copy of the audited financial statements is available upon request from Mass Audubon Vice President for Operations

Bancroft Poor. Members should feel free to contact him at 781-259-2110 or [bpoor@massaudubon.org](mailto:bpoor@massaudubon.org) with any questions about Mass Audubon's finances.

## FY 2018 Income



## FY 2018 Expenses



## OPERATING RESULTS

	FY 2018	FY 2017	FY 2016
Gifts, Grants, & Government Contracts	\$6,122,184	\$5,403,512	\$5,470,959
Budgeted Unrestricted Bequests*	250,000	250,000	250,000
Membership Dues	3,783,370	3,649,464	3,582,643
Program Income	10,744,337	10,098,801	9,945,453
Investment Income	5,775,072	5,542,371	5,435,892
Other Income **	163,543	472,425	(176,399)
<b>Total Operating Income</b>	<b>\$26,838,506</b>	<b>\$25,416,573</b>	<b>\$24,508,548</b>
Environmental Education & Wildlife Sanctuaries	\$18,697,778	\$17,677,313	\$16,723,590
Science & Advocacy	1,460,440	1,445,126	1,494,644
Member Services	2,432,502	2,238,554	2,293,414
Administrative Services	2,295,039	2,216,204	2,293,602
Development	1,952,267	1,838,824	1,703,100
<b>Total Operating Expenses</b>	<b>\$26,838,026</b>	<b>\$25,416,021</b>	<b>\$24,508,350</b>
<b>Operating Surplus</b>	<b>\$480</b>	<b>\$552</b>	<b>\$198</b>

\*An additional \$1,057,239 was received in unrestricted bequests in FY 2018. These critical funds are added to a Board reserve fund, which is available for special investments such as land purchases, energy conservation, all-person accessibility, and major building repairs.

\*\*Income received as restricted operating funds, being transferred to the current fiscal year.



# Environmental Career Pathways Program at UMass Boston

---

Mass Audubon is excited about its new partnership with the University of Massachusetts Boston to provide environmental career exploration and opportunities for its students. It's a natural partnership between Boston's only public research university and Massachusetts' leading nonprofit organization in conservation, environmental education, and advocacy.

UMass Boston's student population also reflects the remarkable diversity of its Boston surrounds, with 57 percent of the student body being students of color and 56 percent first-generation college students. Maria Vasco (pictured above), Mass Audubon's first student ambassador at UMass Boston, shares her excitement for the partnership. "I love to tell my fellow students about all the inspiring work that Mass Audubon is doing and inviting them to be a part of it, from attending Climate Cafés to pursuing environmental careers. For many, it's the first time they're hearing about Mass Audubon, and they're usually interested to learn more."

Together with UMass Boston, we will recruit students for a variety of Mass Audubon internships, work-study placements, and summer jobs. Teams at Mass Audubon and UMass Boston will develop and support the program, and in addition to stipends, funds will be available to remove any barriers

to participating, making sure that students have every opportunity to accept internships and other placements. These funds can include stipends for transportation to Mass Audubon sites and gear or clothing needed in these jobs.

In addition to internships, work-study placements, and summer jobs in environmental fields (e.g., conservation science, environmental education, and bird conservation), Mass Audubon will also welcome UMass Boston students for nonprofit management roles in fields such as information technology, human resources, marketing, accounting, and fundraising. Both undergraduate and graduate students will be encouraged to apply. To learn more about current career opportunities, please visit [massaudubon.org/jobs](https://massaudubon.org/jobs).

Maria notes, "An important trait I have picked up through working at Mass Audubon is to be confident in myself and make more of a push to leap into bigger opportunities." To help more students take "the leap," please contact Nora Frank, Vice President for Philanthropy, at 781-259-2125, or [nfrank@massaudubon.org](mailto:nfrank@massaudubon.org).



# Educational By Design

---

Thanks to the generous support of hundreds of individuals, families, foundations, and the Massachusetts Cultural Facilities Fund, Drumlin Farm’s **Environmental Learning Center (ELC)** opened its doors in June 2018. It now stands as a celebration of both environmental education and green design.

The new 3,700-square-foot, single-story building and its sister structure, the open-air Bluebird Pavilion, form the hub from which all of Drumlin Farm’s environmental education programming flows. They are the home base—literally and metaphorically—of the programs supporting our educational mission, which reach more than 140,000 visitors and program participants each year. The new facility is designed to foster the creativity and collaboration that are the hallmark of Mass Audubon’s nature-based camps, preschools, adult and family workshops, and school programs, which cultivate environmental and science literacy in uniquely flexible and compelling ways.

Powered by a 42.8-kilowatt photovoltaic array (the largest Mass Audubon solar installation to date), the ELC is also an example of sustainability. The project is designed to be “net-positive,” annually generating more energy than the building will consume and helping to power other Drumlin Farm facilities.

In addition to net-zero certification, the true power of the ELC lies in enabling our team of environmental educators to be even more effective and creative in connecting people of all ages to the natural world around them, inspiring curiosity, insights, and action.

“Education pervades everything at Drumlin Farm. But the role and importance of education have shifted dramatically. The offerings 50 years ago featured the wonders of nature, how it works and how to observe it. That continues. But today we realize that our planet and the very nature that we all cherish are in peril. We need to reach more people, young and old, both on- and off-site, engage and draw them in, and bring our message to diverse populations. We need to serve as an example of sustainability, inspire and develop future leaders, and bring science to the forefront of environmental education.”

**John Hammond, 1937-2018**  
*Mass Audubon Council Member, 2011-2018*



# Studying Swallows at Broadmoor

---



One of the strengths of Mass Audubon's statewide network of wildlife sanctuaries is that it provides places to host long-term ecological studies on the changes to ecosystems and individual species. Conservation land that is protected in perpetuity and managed to maintain healthy populations of native species is increasingly rare, but with more than 38,000 protected acres, we provide that essential base on which to conduct meaningful research into the challenges facing and resilience of our native species.

One long-term endeavor has been unfolding at Broadmoor Wildlife Sanctuary in Natick for over 30 years. Tracking the nesting behavior and breeding success of Tree Swallows has been a focus for volunteers, high school and college students, citizen scientists, and academics since 1987. Their data formed the basis for the work of Boston University's Lucy Zipf, a PhD candidate in Biology. In 2016, she became the recipient of a summer research fellowship at Broadmoor focusing on analyzing historical and current monitoring of nest boxes to look for trends in nesting behavior and reproductive success. This fellowship was continued in 2017 and 2018 thanks to support from a generous donor with additional funding from Boston University.

Lucy and other volunteers check 55 nest boxes each week during the nesting season to record the contents: nests, number of eggs, number of chicks, and date of fledging. Early research results indicate some worrisome trends in Tree Swallow populations that may be the result of climate change.

With warmer temperatures, Tree Swallows are arriving at Broadmoor earlier, and increased precipitation is correlated with swallows laying fewer eggs. The more variable weather

patterns also result in a decrease of reproductive success. These reproductive trends may also be connected to changes in the quantity and/or quality of insects that are food for these aerial insectivores. Next summer, thanks to a grant from the Blake-Nuttall Fund, flying insects will be sampled in the fields where the swallows nest and compared with historical data in order to help more fully understand the complex web that supports the Tree Swallows.

Sanctuary Director Elissa Landre notes, "The best part of this project is that it brings together people with not only a variety of backgrounds and expertise, but a shared passion for studying and understanding the complexity of nature. Everyone plays an important role in building, maintaining, and analyzing data that can be used far into the future."

[massaudubon.org/broadmoor](http://massaudubon.org/broadmoor)

---

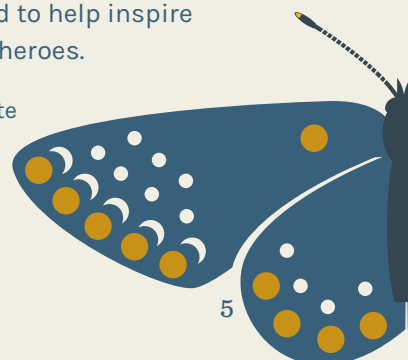
## Be a Nature Hero!

Make your gift today to support wildlife and wildlands across the state and to help inspire the next generation of nature heroes.

**Online:** [massaudubon.org/donate](http://massaudubon.org/donate)

**Mail:** Development Office  
2018 South Great Road  
Lincoln, MA 01773

**Phone:** 781-259-2123





# Advancing Our Climate Agenda

---

One of Mass Audubon's Strategic Goals is to address the challenges of climate change in Massachusetts. And this past year, we have made tremendous progress by fighting for critical legislation on Beacon Hill, helping communities plan for climate impacts, and mobilizing our constituents through Climate Cafés and Youth Climate Summits.

## A Climate Change Legislative Success

For the last four years, Mass Audubon's top legislative priority centered on a plan for Massachusetts to prepare for the impacts of climate change. When we first started working on *An Act providing for the establishment of a comprehensive adaptation management plan in response to climate change*, otherwise referred to as CAMP, few legislators were aware of the gravity and urgency of climate-related threats facing Massachusetts.

The frequency and severity of winter storms over the past few winters offered the silver lining of a wake-up call to decision-makers on Beacon Hill and beyond—it was clear that we needed an adaptation plan. We worked with Senator Marc Pacheco (D-Taunton) and Representative Frank Smizik (D-Brookline), as well as our 52-member Climate Change Adaptation Coalition, of which Mass Audubon is a founding member, to move CAMP through the State House.

Ultimately, rather than being passed as a stand-alone bill, CAMP's major components were included in the Environmental Bond bill, which also authorizes \$2.4 billion in funding for conservation grant programs, climate resiliency, and coastal infrastructure, with special consideration given to projects utilizing nature-based solutions.

This past summer, the Environmental Bond bill passed both the State Senate and House, and quickly made its way to Governor Baker's desk. Mass Audubon's President Gary Clayton and Director of Public Policy & Government Relations Jack Clarke were there to watch Governor Baker sign it. Massachusetts is now the first state in the country to have a climate change adaptation plan codified into law.

## Cities & Towns Taking Action

Mass Audubon provides support for cities and towns across Massachusetts through the state's Municipal Vulnerability Preparedness (MVP) program. The MVP program fosters climate adaptation practices at the local level, providing support for communities to consider their strengths and vulnerabilities to climate impacts, and to prioritize steps they can take to become more resilient.

Several Mass Audubon staff members are certified by the state as MVP providers, which allows us to provide technical assistance to these communities to help them develop action-oriented resiliency plans. By working with the MVP program, we have helped train and share resources with hundreds of people working in more than 150 communities.

## Coffee & Climate Conversation

Research shows that one of the most important actions people can take to help fight climate change is to talk about it with friends, family, and others in their immediate community. But many people who want to talk about climate change don't. This



can be for a number of reasons, from feeling powerless to act on solutions to lacking expertise to speak knowledgeably to the issues.

Enter the Climate Café. This concept provides a way for people to discuss climate change in a judgment-free, informal environment with other members of their community. By doing so, they gain valuable practice in conversing about the topic, and are more likely to talk about it in their own individual social circles.

So far, Mass Audubon has hosted seven Climate Cafés around the state at locations including UMass Boston, Newton, Northampton, and Natick, with more planned for the coming year.

## Youth Climate Summits

For those coming of age now, future projections of sea level rise and extreme heat at the end of the century are not an abstract future. Younger generations will live to see the more severe impacts of climate change.

Fortunately for us, younger Americans are far more likely to understand that climate change is real and driven primarily by our burning of fossil fuels. They are also more likely to support actions to fight climate change.

With this knowledge in mind, Mass Audubon's Arcadia Wildlife Sanctuary, in the Connecticut River Valley, worked with local partners to host a Youth Climate Summit in November 2017. During this event, area high school students learned about sustainability solutions and the value of natural ecosystems in fighting climate change. They had the opportunity to hear from other young climate leaders at the United Nations Climate Change Conference in Bonn, Germany, via Skype.

Never was there a question of what should we do, only how can we do it. The second summit took place in November 2018, where we inspired even more future climate change leaders to take action.

[massaudubon.org/advocacy](http://massaudubon.org/advocacy)



Arcadia Climate Students © Phil Doyle



# Firefly Watch

Who isn't delighted to see fireflies begin their mysterious blinking-light displays on a midsummer night? Fans of these intriguing insects turned their awe into positive action by joining Mass Audubon's Firefly Watch Citizen Science Project, which launched this summer in partnership with researchers from Tufts University.

Firefly Watch combines an annual summer evening ritual with important research. People of all ages and backgrounds can become part of a community of volunteer "citizen scientists" looking for fireflies in their backyards or nearby fields and then providing data in support of these amazing creatures and their habitats. Their reports will play a critical role in answering questions related to firefly vitality, including population changes, geographic distribution, and environmental pressures.

Mass Audubon has succeeded the Museum of Science Boston in overseeing Firefly Watch and is continuing to partner with the laboratory of Tufts University biology professor Sara Lewis, a recognized authority on North American firefly behavior and ecology.

"I'm absolutely thrilled to be part of this exciting citizen science project with Mass Audubon," Professor Lewis said. "As we try to track firefly population trends around the country, we really need everyone's help. Plus, it's fun! Everyone loves watching—and counting—fireflies, right?"

Director of Education Kris Scopinich shared the Tufts researcher's enthusiasm. "Citizen science aligns closely with Mass Audubon's mission to connect people with nature, so we are truly excited to be overseeing Firefly Watch and partnering with Sara Lewis and her team."

In its inaugural year, Firefly Watch received 2,054 observations from 37 U.S. states and three Canadian provinces. Those numbers will only grow as Mass Audubon reaches more people who share a curiosity about fireflies and a concern for wildlife protection.

[massaudubon.org/fireflywatch](http://massaudubon.org/fireflywatch)

# Land Conservation Summary

## Fiscal Year 2018

---

This year, with the support of generous individuals, foundations, families, businesses, communities, and public and private partners, Mass Audubon protected an additional 922.58 acres of land across Massachusetts, raising our total conserved acreage to more than 38,000. This land serves as important habitat for plants and animals, and provides many quality-of-life benefits for people in a climate-changing world—including clean drinking water, fresh air, and places to experience the joys of nature. A special thanks to key partners listed here in bold.



### Land Protected by Mass Audubon within the Past 12 Months

---

Total Acres Conserved within the Past 12 Months.....922.58

### Land Under Mass Audubon Stewardship as of June 30, 2018

---

Acres owned by Mass Audubon.....31,948.08

Acres under Conservation Restrictions  
held by Mass Audubon.....6,055.38

Total Acres of Conserved Land .....38,003.46



## PURCHASES OF SANCTUARY LANDS

	ACRES	MUNICIPALITY	SANCTUARY
Tidmarsh Farms (East)	481	Plymouth	Tidmarsh

Mass Audubon established its newest wildlife sanctuary, Tidmarsh, by working in partnership with the **Town of Plymouth, State Department of Conservation and Recreation, U.S. Fish & Wildlife Service**, landowners **Evan Schulman and Glorianna Davenport**, and many others. Tidmarsh’s restored natural systems represent a landscape of hope, where promising land conservation approaches transformed a degraded ecosystem into a beautiful, resilient landscape. The story of Tidmarsh inspires us to continue to act on nature’s behalf in a climate-changing world.

O’Brien	109.76	Plainfield	West Mountain
---------	--------	------------	---------------

This property abuts the 1,700-acre West Mountain Wildlife Sanctuary, which is connected to thousands of protected acres held by the Commonwealth’s Department of Conservation and Recreation and the Department of Fish and Game. A high priority of the sanctuary’s land protection plan, this acquisition was funded in part by grants from the **Executive Office of Energy and Environmental Affairs, Division of Conservation Services**, and the **Wild & Scenic Westfield River**, and with the assistance of the **Franklin Land Trust**.

Farmer	102.55	Sheffield	Lime Kiln Farm
--------	--------	-----------	----------------

With a grant from the **Housatonic River Natural Resource Damages Fund** (administered by the **Massachusetts Department of Environmental Protection**), Mass Audubon protected this property, known locally as the Barnum Street Swamp, which has been a priority of the sanctuary’s land protection plan due to its role in groundwater protection, biodiversity, and passive recreation.

Russell	5.47	Princeton	Wachusett Meadow
---------	------	-----------	------------------

Abutting the Wachusett Meadow Wildlife Sanctuary, this property links Wachusett Meadow with several hundred acres of protected lands. It is entirely designated as *Estimated Habitats of Rare Wildlife and Priority Habitat of Rare Species* under the Massachusetts Natural Heritage and Endangered Species program. The land is also adjacent to the Town of Princeton’s 136-acre Four Corners Conservation Area, which Mass Audubon helped protect nine years ago.

## GIFTS OF SANCTUARY LANDS

	ACRES	MUNICIPALITY	SANCTUARY
Bass	15.49	Richmond	Pleasant Valley

This property is along the proposed Berkshires Natural Resource Council’s High Road and was given to Mass Audubon by **Ruth Bass**. It connects the Yokun Ridge Trail to the north with the Lenox Watershed trails to the south. The addition of this land brings Pleasant Valley Wildlife Sanctuary over the ridge into Richmond, protecting extensive habitat for wildlife including foxes, owls, coyotes, and bears. This new parcel has been designated “Milt’s Woods” in honor of Ruth’s husband, Milton, who wanted it to be conserved.

MacDonald	8.86	Gardner	Lake Wampanoag
-----------	------	---------	----------------

In 1993, **Helen MacDonald** and her sister Catherine sold 118 acres of their family’s land to Mass Audubon to be added to the Lake Wampanoag Wildlife Sanctuary. Helen is now in her 90s and chose to donate an additional 8.8 acres. This gift of land adds to a sanctuary that provides important grassland and forest habitat for dragonflies, butterflies, moose, and others.

Scace	3.57	Richmond	Pleasant Valley
-------	------	----------	-----------------

**Wayne Scace** donated land that abuts the northern edge of Pleasant Valley Wildlife Sanctuary and encompasses a segment of the Berkshire Natural Resource Council’s proposed High Road Trail. This acquisition preserves a *BioMap2 Core Habitat and Critical Natural Landscape* area, and creates a wildlife corridor link between the sanctuary and other protected open spaces.



# Land Conservation Summary

## Continued

### PURCHASES OF CONSERVATION RESTRICTIONS

	ACRES	MUNICIPALITY	SANCTUARY
Goldfarb	48.84	Northampton	Arcadia

The **City of Northampton**, in partnership with Mass Audubon, is protecting a large forest block, and the Goldfarb property comprises the southern section of this acquisition. The high-quality forest and wetland property, now protected by a Conservation Restriction owned by Mass Audubon, expands the Rocky Hill Greenway and was a priority on the sanctuary's land protection plan.

Webb	16.51	Sheffield	Lime Kiln Farm
------	-------	-----------	----------------

This Conservation Restriction, along with the 102-acre Farmer land purchase described above, increases the size of the Lime Kiln Farm Wildlife Sanctuary by 50 percent. Lime Kiln is one of the most biologically diverse tracts of protected land in the southern Berkshires. The acquisition of this Conservation Restriction was funded by a grant from the **Housatonic River Natural Resource Damages Fund**, administered by the **Massachusetts Department of Environmental Protection**.

O'Brien	2.73	Northampton	Arcadia
---------	------	-------------	---------

These two lots totaling 2.73 acres abut Arcadia Wildlife Sanctuary and a City of Northampton conservation parcel. The seller, Judy O'Brien, offered a Conservation Restriction to Mass Audubon at a reduced price by taking advantage of the Massachusetts Conservation Land Tax Credit Program. The parcels are within a known corridor for wildlife, including bobcats and fishers.

### GIFTS OF CONSERVATION RESTRICTIONS

	ACRES	MUNICIPALITY	SANCTUARY
Tidmarsh Farms (West)	127.8	Plymouth	Tidmarsh

Mass Audubon acquired a permanent Conservation Restriction on this property, across the road from and adjacent to Tidmarsh Wildlife Sanctuary (see above). This property, known as the Foothills Preserve, was acquired by the **Town of Plymouth** for conservation purposes. The area will undergo an extensive wetlands restoration, similar to that of our Tidmarsh Wildlife Sanctuary. This restoration will hydrologically reconnect the two properties, both acquired from landowners Evan Schulman and Glorianna Davenport.



## SUPPORTERS

Mass Audubon gratefully acknowledges the individuals, foundations, corporations, and government agencies whose generous financial contributions and pledges provided critical support for our conservation, education, and advocacy efforts between July 1, 2017 and June 30, 2018. We are pleased to recognize the leading contributors and express our gratitude to our more than 100,000 members. Please note that this does not include membership dues, except at the \$750 level. For gifts of land during this period, see page 9.

We wish to thank the following gift funds and foundations, which recommended grants to Mass Audubon through donor advised funds and other giving vehicles during fiscal year 2018:

Ayco Charitable Foundation	Fidelity Charitable
BNY Mellon Charitable Gift Fund	Fleet Charitable Gift Fund
The Boston Foundation	Greater Kansas City Community Foundation
The Cape Cod Foundation: A Community Foundation	Greater Worcester Community Foundation
Combined Jewish Philanthropies	The New York Community Trust
Community Foundation of New Jersey	Santa Barbara Foundation
Community Foundation of Western Massachusetts	Schwab Charitable Fund
Essex County Community Foundation	Vanguard Charitable Endowment Program

## Symbol Key:

★A Visionary: an individual who has provided \$2,500 or more in support for Mass Audubon's general operations or operating support for a particular sanctuary or program

✧ An individual who passed away this year

Every effort was made to accurately reflect each contributor. If you find an error in the list, please accept our sincere apology and contact the Development Office at 781-259-2123.

## Founder's Circle: Platinum

**\$25,000+**

Anonymous (5)  
Nancy S. Anthony★/The Sidney A. Swensrud Foundation  
Carla Bregman  
Peter Brooke  
Paul L. & Susan P. Chern★  
Franz & Anne Colloredo-Mansfeld★  
Susanna Colloredo-Mansfeld  
Mr. & Mrs. Albert M. Creighton Jr.★/ Creighton Narada Foundation  
Joseph & Barbara Ellis  
Ronna & Neal Erickson  
Beth Kressley Goldstein & Dennis Goldstein★  
Charles & Natasha Grigg★  
Lindsey & Zack Gund/ Zachary and Lindsey Gund Foundation  
Robert & Karen Hale  
Nancy C. & John S. Hammond★  
Ann & James Hancock  
Heather & David Hill  
Barbara & Amos Hostetter  
Chris & Sue Klem★  
Laura P. Krich  
James & Justine Laugharn★  
William & Amanda Madar★  
Kevin & Kristine McLellan★  
Patrick McLampy & Rev. Priscilla Lawrence★  
Lee Nordblom★  
J. David Officer & Dr. Marcia J. Wade★  
Cathy & Chris Rogers  
Jane Saltonstall  
Judy A. Samelson & William Schawbel★  
Kristin & Roger Servison★  
Binkley & Paula Shorts  
Peter Talbot  
John L. Thorndike  
Dick & Marian Thornton★  
Patricia A. Thornton★  
Mrs. Jephtha H. Wade★  
Winnie Wong, Arthur Cheng, & Courtney Cheng

## Founder's Circle: Gold

**\$10,000-\$24,999**

Anonymous (11)  
Mimi & Ivan Ace★  
Ramon L. Alonso★  
Christopher Baldwin & Sally Reyering★

Robert P. Ball★  
Jennifer & Jonathan Barnes★  
Gail & Robert Bedoukian★  
Anita & Josh Bekenstein★  
Elizabeth J. & Robert M. Burke III★  
Frank & Ruth Butler  
Elizabeth Cabot★  
Ann & Jared Chase★  
Jim Chervenak★/ Chervenak-Nunnalle Foundation  
John & Bayard Cobb★  
Brian & Karen Conway  
Susan Coolidge★  
Donald & Donna Cooper★  
Paula V. Cortes★  
Judith & David Craver★  
Dr. Modestino & Mrs. Nancy Criscitiello★  
David & Victoria Croll★/ The Croll Foundation  
Laura C. Cutler★  
Deirdre Danahar  
Edmund P. DeLaCour★/ The DeLaCour Family Foundation  
Mrs. Mary & Dr. John Deyst★  
Kathryn K. Disney  
Thomas Foster & Surekha Srinivasan★  
Lorna Gibson & Jean Hess★  
Thaddeus R. & Elizabeth Gillespie★  
Walter F. & Alida Greeley★  
William Haney  
Gayle & Bailey Hans  
John & Jillian Hayes  
J. Atwood & Elizabeth Ives★  
Kenneth M. Jones  
Donald P. Kalischer  
Judith King★  
Woodie & Elaine Lackey★  
Virginia Lacy★  
Anne R. Lovett & Stephen G. Woodsum★/Lovett-Woodsum Foundation Inc.  
Martin & Susan Madaus  
Andrew S. Magee★  
Martin Malnati★  
Carolyn McCane-Chin & David Chin  
Bill & Linda McQuillan★  
Kathryn & William Medford★  
Mary Judith Meelia★  
Elizabeth Mellor★  
Robert Murchison & Alison Hoppin Murchison★  
Barbara Murphy★  
Mark Nichols & Lowell Massey  
Al & Catherine Nierenberg★/ Evergreen Charitable Fund  
Jonathan & Jessie Panek★  
Patricia T. & James W. Poitras★  
Nancy Poor★  
William & Helen Pounds★  
Robert & Amelia Rands★/ Rands Roboff 2003 Revocable Trust  
Jeannette & Hadley Reynolds  
John & Linda Riehl  
Abby Rockefeller & Lee Halprin★  
James & Roseanne Saalfield★  
Barbara & Stanley Schantz★  
Joanne Snyder  
Robert & Sandra Taylor★  
Walter & Marylou Tingle

Sally B. Utiger  
Rosamond Vaule★  
Robert Vessels★★  
Eric & Sarah Ward★  
Linda Williams & Stephen Walch★  
Mr. & Mrs.★ Robert Wohlgemuth★/ Esther & Morton Wohlgemuth Foundation, Inc.  
David Young

## Founder's Circle: Silver

**\$5,000-\$9,999**

Anonymous (11)  
Charles Adams & Eleanor Livingston★  
Judith Ann Amelotte★  
Margaret Ashforth  
Susan R. Avery  
Tom & Judy Bailey★/ Bailey Family Foundation  
Melora & Andrew Balson★  
Suzanne & Henry Bass★  
Bruce Beane & Debby Walther  
Charlotte & Samuel Berk  
Clark & Susana Bernard  
Peter & Susan Bernard★  
Bruce Black & Mary Brogan★  
Henry E. Blair  
The Brach Family★  
Pierce & Elise Browne  
Sara H. Brydges★  
Mr. & Mrs. Norman R. Buck★  
Lalor & Patricia Burdick★  
Kathi Cafiero★  
Henry & Pam Camosse★  
Catherine M. Campbell & Jack W. Orrock★  
Jane & Roger Cheever★  
Richard & Patricia Chute★  
Gary & Helene Clayton★  
Joelita Cleveland  
Elizabeth Collins & Steve Webster  
Chris Connolly & Marjorie Liner★  
Alison Coolidge & Tom Boreiko★  
Mary & Allyn Copp★  
Robert & Rigney Cunningham  
Victoria R. Cunningham Family★  
Jill & Nicholas d'Arbeloff  
Glorianna Davenport & Evan Schulman  
Peggy H. Davis★  
Mr. & Mrs. Thomas A. DeMarco III★  
Michael Dempsey & Lynda Urgotis  
Eugene Bicknell Doggett & Nina Lord Doggett★  
Herbert & Pauline Emilson★  
Kathleen Emrich & Robert Sherwood★  
Barbara E. Fargo★  
Charles & Carol J. Fayerweather★  
Kate S. Flather★  
Elaine Foster★  
Jody & Tom Gill★  
Robert H. Grohskopf Jr. & Lisa Van Tassel★  
Irene S. Haney★  
Alynn & Andrew Harvey★  
Christina T. Hobbs★  
Jean & Benjamin Horne★  
Karen Howat★  
John & Sarah Howe  
Morton S. Isaacson★ & Erica Zissman★

Jennifer Johnson★  
Richard & Sandra Johnson  
Gerald S. & Linda B. Jones★  
Arlene E. Handschuch & Steven A. Kaufman★  
Lorna Keith★  
Pamela Kohlberg & Curt Greer★  
Bruce & Ellen Kunkel★  
Lynn L. & Richard Landy★  
Mr. & Mrs. Robert A. Lawrence★  
Virginia Maloney Lawrence★  
Joan LeBel, M.D.★  
William R. Leitch★  
Jeanne A. Lesperance  
Carol A. & Martin B. Levin★  
Nathaniel & Karen Levy★  
Janet Lovejoy  
James & Robert MacGregor/ James MacGregor Trust  
Katherine MacGregor  
Ann Macomber★  
Adam & Rosemary Markell★  
Mark & Kimberly Marroni★  
Kathy & Rives McGinley★  
David & Julianne Mehegan  
Katharine E. Merck★  
Sharon Miller  
Stephen & Christina Miller  
Timothy & Deborah Moore★  
Michelle Morrissey & Nikheel Dhekne★  
Elizabeth Munro & Peter Wheeler  
Robert J. Myslik★  
David & Sharon Neskey★  
C. Walter Nichols III & Mrs. Helga Nichols★  
Holly Nixholm & Helen Donovan★  
Amy & Bouke Noordzij★/ Doe Family Foundation  
Andrew S. & Samuel S. Pang★  
Jane M. & A. Neil Pappalardo★  
Martha R. Pappas★  
Rienzi B. & Mary F. Parker★  
Carol & Charles Peterman★  
Courtney & Jonah Petri  
Phyllis Pollack & Peter Metz★  
Renata Pomponi & Karl Büttner  
Drs. Gill & Janey Pratt  
George Putnam III & Kathy Putnam★  
Sally Quinn★  
Polly & Brock Reeve  
Margaret L. Rhodes★  
Marsha C. Salett★  
Susan Sargent & Tom Peters★  
Dietrich & Julie Schlobohm  
Eric & Susan Schultz  
Deb Schweikert  
Willow B. Shire★  
Kathleen Skelly  
Nancy B. Soulette★  
Anne & Elon Spar  
Lee & Judith R. Spelke★  
Shawne & Jon Spelke★  
Jim Sperling & Ginny Loeb★/ The Dorothy and Jonathan Rintels Foundation  
Richard Stillwell★  
Lauren & Stephen Stimson  
Susan Straight★  
Mr.★ & Mrs. John H. Valentine★

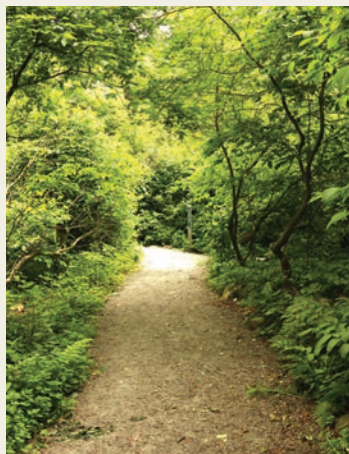
Drs. Sophie Vandebroek & Jesús del Alamo  
David & Jade Walsh★/  
The Free Lunch Foundation  
Stephen L. Wasby  
Henry & Annie Woolsey★

**Founder's Circle: Bronze**  
**\$2,500-\$4,999**

Laura & Mark Adamczyk★  
Bill & Ann Allan  
Annemarie Altman & Dave Cook★  
Rich & Heidi Angle★  
Barbara & Reed Anthony★  
Peter & Marygrace Barber★  
Michael & Donna Bass★  
Steedman Bass★  
James Becker & Aber Lynch★  
Janis Bettencourt  
Janet & Robert Bissell  
Gail Boyajian & Gerry Bergstein★  
Ray Boylan & Stanley Wilson★  
Peter & Pam Brown★  
Dr. Paul A. & Mrs. Katie Buttenwieser★/  
C&P Buttenwieser Foundation  
Ellen Cabot & Matthew Watson★  
Nancy L. Cantelmo★  
Mr. & Mrs. Elliott G. Carr★  
Alfred D. Chandler III &  
Susan Esco Chandler  
Bruce Childs★  
Susan B. & David D. Clark  
Marie & Dennis Corcoran★  
Thomas & Cynthia Costin  
Kevin Darcy & Stephanie Prisch★  
Martha L. Densmore★  
Douglas Dick & Ann Easterbrooks  
Mary Dockray-Miller & Michael Miller★  
Julian A. Draz★

Frank Dunau & Amy Davis★  
David & Edith Engel★  
Andrew J. Falender & Jaquelyn Lenth★  
Anthony & Stephanie Ferlazzo★  
Louisa Fleischmann & Barbara Williams  
Kathy & Martin Fogle★  
Gary & Annette Ford★  
Sara & Ed Foster  
Mr. & Mrs. Thomas D. French★  
John C. & Janet A. Fuller★  
Mr. & Mrs. Robert L. Gable★  
Katharine Garfield  
Jean & Edward George★  
Craig & Nancy Gibson★  
Elizabeth & John Gilmore★/  
The Camden Foundation  
Rolf & Julie Goetze★  
Melina & Gene Goldstein★  
Timothy Goodman★/  
Kathryn Goodman Foundation  
Robyn & Larry Gottesdiener  
Mary Brinson Griffin & Andy O'Neill★  
Eva Guinan & Greta Friar★  
Jane C. Hallowell★  
Harry Hanson & Annie Hollingsworth  
Elizabeth H. Heide★  
Donald F. Henderson★  
Ms. Mary R. Herlihy★  
Robie Hubley & Anne Awad★  
Ruth & Bob Hucks★

Stuart & Bonnie Hunziker★  
Richard Hussong & Melinda E. Stewart★  
Frank Isik & Nicole Gibran★  
Laura A. Johnson & Arthur W. Rogers★  
Leonard & Marjorie Johnson★  
Patricia Spinney Joyce & Edward Joyce★  
Sarah Jubitz★  
Ann & Paul Kaplan★  
Edward Kaye & Alyssa Lebel★  
Kay Kelley & Peg Dolan★  
Erik & Sarah Knutzen Family★  
Diane Krause



**NATURE HEROES** like  
you help create and  
maintain **255 miles**  
of trails across 58  
wildlife sanctuaries

Ellen Lahlum  
Jacqueline & Richard Leach★  
Dix & Roxy Leeson Jr.★/The Verano Fund  
Susan & John Littlefield  
Christine Lojko  
Anne S. Lombard  
Michael & Gail Lynch  
William F. & Sheila R. Macauley★  
Donald MacFarlane  
Nagesh Mahanthappa &  
Valentine Talland★  
Gary & Karen Martin★  
Martha Mazzone★  
Karen & Warren McFarlan★  
David McPherson & Gail Gugel★  
Erin & Nathaniel Meyer★/  
The Penobscot Fund  
Ann Meyers & Bradford Christoforetti  
Christopher Miller & Robin Feuer Miller★  
Deborah & James Miller★  
Heather Miller  
Paul & Ellen Mintzer★  
Martha S. Mugar★  
Cynthia & Thomas Murray  
David Nalven & Jill Goldman★  
Christopher Neill & Linda Deegan★  
Timothy O'Brien & Kim Novino★  
Donald J. Palladino★  
Bertram & Marla S. Perkel★  
Edward Petcavage  
Alma & Silvester Pomponi  
Faith & John★ Preston

Mira Rabin & Thomas Whitman★/  
The Nararo Foundation  
Marc & Emily Reardon★  
Linda Reznikiewicz  
Adam Riley★  
Kathryn L. Riley★  
Karen Rosenbaum & Janice Jorgensen  
Jessica Roy & Matthew Templeton  
Gail & John Sampieri★  
Michael & Kathryn Sarcione★  
Gerie Schumann  
Michael & Jennifer Sexton★  
Kathy Seymour★  
Patrick & Kathy Sherbrooke★  
Douglas Sherk & Michael Goins-Sherk★  
Austin & Susan Smith★  
Jackie Spencer & Tom Mattox★  
Brooke Stevens & Thomas L. McCorkle★  
Lawrence Stifler & Mary McFadden★/  
Stifler Family Foundation  
John Stix & Dora Knez★  
David & Patricia Strauss★  
Garrett J. Stuck & Pamela Coravos★  
Susan Surova  
David Van Ness Taylor  
Susan & William Thornton  
Conrad H. & Harriet Todd★  
Liz Nelson Weaver  
Barbara Wells★  
David & Patricia Williams★  
Esther C. Williams★  
Michael Wilson & Susan Greenleaf★  
Alison H. Wintman★  
Ann & George Wyman  
Brett & Howard Young  
Eric Zimmerman & Audrey Kalmus★

**President's Circle**  
**\$1,250-\$2,499**

Anonymous (14)  
Michael & Deborah Alexander  
Mark & Patrice Allen  
Steven W. Allen  
Dorothy Altman  
Sandra Anderson & Meg Wallace  
Barbara Andreas & Dennis Cooke  
Barbara M. Anthony  
Stuart Armstrong & Michael Levesque  
E. Breck Arnzen & Lani Peterson-Arnzen  
Rebecca Arons & Eric Fastiff  
Dennis Arsensau  
Jeffrey Avery  
Dick & Sally Avery  
William & Rosa Babcock  
Jean & Ralph Baierlein  
Drs. John & Barbara Balser  
Kristin Barr & David Pitkin  
Kathryn & Thomas Battillo  
Charles & Gail Belanger  
Michele & Alan Bembenek  
Dan Berger & Laura Katz  
Constance & Stephen Bernier  
Joan & Bruce Bertrand  
Richard O. Bierregaard Jr. &  
Catherine E. Dolan  
Jerry & Grace Bird  
Jennifer Black & Lora Goldston  
Camilla Blackman  
Pengwynne Blevins  
Joshua & Amy Boger  
Nelson & Alice Bolen  
Tracey Bolotnick & Robert Seaver

Jonathan Brandon & Harriet Scheft  
Richard & Helen Brockelman  
Maurice & Sharon Brodeur  
Mrs. Brian A. Brooks  
David & Deborah Brooks  
Robert & Susan Brown  
John & Catherine Bueker  
Alice Burgess  
John & Lale Burk  
Katharine F. Burnett  
Charles Burnham/Burnham Foundation  
John & Janet Bush  
George & Tammy Butler  
Richard & Maxine Charlton  
Micah & Iris Chase  
Betty & Larry Chelmow  
Alan Cody & Edith Moricz  
Eric & Christine Cody  
David Cole & Betty Slade  
Catherine Coleman & Thomas Mullen  
Kenneth & Lori Colmer  
The Conerly Family  
Peter Conrad & Libby Bradshaw  
Katherine Converse  
Elizabeth G. & Linzee Coolidge  
Hamilton Coolidge  
Michael V. & Marcia D. Corrigan  
Bart & Mette Coughlin  
Kathleen Coyle  
Carrie & Christopher Crane  
Mary Elizabeth & Scott Cranton  
Peter & Catherine Creighton  
Melvin S. Cutler/Melvin S. Cutler  
Charitable Foundation  
Emily Dahl & Michael Kuczewski  
Laurie & Phil Davis  
Charlotte de Sieyes/  
Apple Lane Foundation  
Carol Decker & Kathryn J. Kramer  
Michele Demarest & John D. Patterson  
Michael Densmore  
John & Maria Dirlam  
Amy & Brian Dobbins  
James & Carol Donnelly  
Mark & Pilar Doughty  
Wells & Leelie Dow  
Daniel Edwards & Ida Chang  
Susan Edwards  
Alexander Ellis III  
Dorothea R. Endicott  
Fred & Patty Eppinger  
Peter W. Erskine  
Wenley Ferguson & John Wolf  
Julia & David Fleischner  
Warner & Mary Fletcher  
Delia Flynn  
Nancy★ & Richard Forbes  
Rick & Joan Francolini  
Nora Frank & Walter Houseman  
Annemarie & Mark Freitas  
Marc & Erin French  
Michael J. & Linda L. Garrity  
Marcy Geffer  
Alan & Virginia George  
Bill & Marsha Gette  
Pierre & Mary Jo Giroux  
Jim Goddard & Judy Hoyt Goddard  
Janet & Michael Golan  
Drs. Joel P. Goldfarb & Elizabeth H.  
Weinschel/The Weinschel  
Goldfarb Foundation  
Claudia Goldin  
John T. Goodhue Jr. & Anne W. Smith  
Jamie Gorelick & Richard Waldhorn

David & Patricia Gosda  
 Alan Gowell  
 Larry & Marcia★ Greene  
 Alfred & Sally Griggs  
 James & Joanne Grigos  
 Ronald & Katherine Groves  
 Lara & Grant Gund  
 John & Susan Gunderson  
 Joe Hale & Beth Dinino  
 Edward O. Handy III & Mary C. Handy  
 Douglas & Susan Harding  
 David & Laurie Hark  
 William & Marian Harman  
 Mrs. Johanna A. & Dr. William H. Harris/  
 The William H. Harris Foundation

Pamela & Don Hawley  
 William Hayes  
 Ruth & Jan Heespelink  
 Paul E. Hegarty  
 Karen Heiting  
 Edith Herbeck  
 Jacob & Zita Hesterman  
 Joseph & Victoria Hibbard  
 Stephen & Virginia Hibbard  
 Brian & Robin Hicks  
 Jay Himmelstein & Ellen Ruell  
 Sara & John Ho  
 William Hobbie & Virginia Rogers  
 Jim & Michele Hoben  
 Donna & Peter Hollinger  
 Charles H. Hood II & Judy Hood  
 Drs. Richard Horn & Diane Souvaine  
 Rob Howe & Martha Nichols  
 Jonathan & Anna Howell  
 Bob & Kathy Hubby  
 Nora Huvelle & David Lubin  
 Ellen & James Ingram

Russell & Janice Isaia  
 Benjamin Ives & Sarah Morrison  
 Allan Johannesen & Helen Shuster  
 Malcolm★ & Sally Johnston  
 Robert A. Jonas & Margaret Bullitt-Jonas/  
 Living Springs Foundation  
 John & Alison Kaar  
 Susan Kadezabek & Aravind Vijayakirithi  
 George & Helen Keeler  
 Linda & Silas Kopf  
 Maria & Wes Kussmaul  
 Susan Landon  
 Anne & James Lang  
 Holly Langer  
 Miriam G. Lasher  
 Liz Adams Lasser & Clifford Lasser  
 Debby & Ted Leach  
 Dr. Diane M. Lebel & Dr. Alan Harris  
 Mr. & Mrs. David S. Lee  
 Mr. & Mrs. Henry Lee  
 Alice & Matt Lehrer  
 Drs. Kathleen & Sanford Leslie  
 Linda & Jeffrey Levin-Scherz  
 Patty & Richard Levy  
 Farley Lewis  
 Adam & Belinda Lill  
 Debbie Listerneck  
 William Long  
 Richard & Roberta Longley  
 Gwyneth & Robert★ Loud  
 Francis & Victoria Lowell  
 Dianne Luby  
 Merloyd Ludington & John Myers  
 Mark & Mary Lunsford  
 Peter L. MacDonald  
 David & Linda MacDougall  
 Kevin Mahoney & Dana Paris Mahoney

Anita & Michael Malina  
 Marilyn & Don Malpass  
 Phyllis Mandel  
 John & Carolyn Marsh  
 Susan & Bradd Martone  
 Drs. Owen & Eileen Mathieu  
 Brian & Anne Mazar  
 Eileen McDonagh & Robert E. Davoli  
 Thomas & Margaret McDonagh  
 Jim & Sarah McGregor  
 The McGuinness Family  
 Bernard J. McHugh & Frances H. Clark  
 Sylvia & Thomas McKean  
 Elizabeth & John McQuillan



**NATURE HEROES** like you support **47 scientific research studies** that use our sanctuaries as outdoor laboratories to better understand our natural world

Kathleen McShane & Frederic Lowrie  
 Lisa Meeks  
 Karen & Justin Miel  
 Jody & Kenneth Miller  
 Keelin & Neal Miller  
 David Moon & Carolyn Moore  
 Jane Moosbruker, Ph.D.  
 Barrett & Mahroo Morgan  
 Mr. & Mrs. Douglass H. Morse  
 Mr. & Mrs. Harold L. Nelson  
 Charles W. Nims  
 Emily O'Brien & Diane Cummings  
 Alison O'Hare  
 Robert E. & Melinda S. Oleksiak  
 Richard & Lisa Oliver  
 Margaret Olson & Richard Rosenbaum  
 Judith & Robert Outman-Conant  
 Drs. David & Elizabeth Page  
 Michael Pappone & Diane Savitzky  
 Mav Pardee & Genevra Valvo  
 Barbara & Oliver Parker  
 Abby Patterson  
 Geraldine & Douglas Payne  
 Esther Pelletier  
 Andrea Peraner-Sweet & Mitchell Sweet  
 Linda & Winfield Perry  
 Mary Persky  
 David & Greta Peterson  
 Judith Pierce & Robert M. Graham  
 Anthony & Karen Pierson  
 Bancroft & Mary Poor  
 Mrs. Hitt Potter  
 Daniel & Susanna Pratt  
 Robert L. Prescott Jr.  
 Cris Ratiner  
 Deborah Reichert & Chanchal Samanta  
 Janet Reinhart

Mr. & Mrs. Douglas B. Rhodes  
 Dwight & Margaret Robinson  
 Professor & Mrs. Nicholas Robinson  
 Rosemary Rodie  
 Shelley & Todd Rodman  
 Kathleen Rogers & Rick Teller  
 William & Janet Romanishin  
 Nancy & Robert Rosenthal  
 Robert Rotberg  
 Daniel & Dorothy Salmon  
 Faith Ford Sandstrom &  
 Frederick H. Sandstrom  
 Susan Schappert & Daniel M. Hellerstein  
 Robin Schweikart & David Farrington

Ann & Doug Sharpe/  
 Sharpe Family Foundation  
 Alice M. & David W. Shearer  
 Bill & Joan Shelley  
 Jensie & William Shipley  
 Sandra & Robert Silk  
 Janet & L. Keith★ Sisterson  
 Patricia Smith & Frances Lussier  
 Anne & Thomas Snyder  
 Karen R. Sollins  
 Duncan Spelman & Elizabeth Grady  
 Lee Spence  
 David & Donna Sprague  
 Dr. Lisa A. Standley  
 Caren & William Stangel  
 Mr. & Mrs. Vincent P. Stanton  
 Mark Strauss  
 Drs. Herman & Joan Suit  
 Margot Sullivan  
 Annette & Kenneth Swain  
 Eric Swart & Sijia Lin  
 Susan Swartzlander  
 Debbie & Jack Swenson  
 Chester & Jane Swett  
 Sidra Tareen  
 Elizabeth A. Tepper  
 Donna & Ronald Thompson  
 Michael & Andrea Urban  
 Virginia Ursin  
 Conevery & Matthew Valencius  
 Eli & Laura Valk  
 Drs. Sheila Vince & Michael Boss  
 Maureen W. Vokey  
 Ken & Nancy Vona  
 William T. Wachenfeld  
 Beth Walsh/The Norbell Foundation  
 Jennifer & Paul Walsh

Elissa & William Warner  
 Thomas T. & Anne Marie Warren  
 Scott Wayne  
 Dave & Kitty Weaver  
 Charles & Louise Weed  
 Nancy L. Weiss  
 Herbert & Elizabeth Wells  
 Rand & Sue Wentworth  
 Bancroft & Mercy Wheeler  
 Richard & Betty Ann Wheeler  
 Nathaniel T. & Eugenia S. Wheelwright  
 Bob & Karen White  
 Christine & Steven Whitebread  
 Judith Whiteside  
 Elizabeth Willey  
 Dudley & Judith Williams  
 Linda Williams & Stephen Walch  
 Peter & Shirley Williams/  
 Brigham Hill Foundation  
 Dudley & Sally Willis  
 Alan Wilson & Charlotte Bendorp Wilson  
 David Witherbee & Michelle Bociek  
 Brett & Howard Young  
 Carl & Laurel Zangerl  
 Brenda & Frank Zolli  
 Delphine & Omar Zurkiya

**Corporations, Foundations, and Other Supporters**  
**\$25,000+**

Anonymous (3)  
 Bafflin Foundation  
 Lloyd G. Balfour Foundation,  
 Bank of America, N.A., Trustee  
 Benevity Community Impact Fund  
 The Beveridge Family Foundation, Inc.  
 The Boston Committee of the  
 Garden Club of America  
 The Cape Cod Foundation  
 Caplan Foundation for Early Childhood  
 The Cedar Street Foundation  
 The Ogden Codman Trust  
 Josephine and Louise Crane Foundation  
 The Cricket Foundation  
 Fred Harris Daniels Foundation  
 Dassault Systemes US Foundation  
 Oliver S. & Jennie R. Donaldson  
 Charitable Trust  
 Gulf of Maine Institute Inc.  
 The Nancy Foss Heath and Richard B.  
 Heath Educational, Cultural, and  
 Environmental Foundation  
 Island Foundation, Inc.  
 Lookout Foundation, Inc.  
 Massachusetts Woodlands Institute Inc.  
 The MathWorks, Inc.  
 Amy B. Morrill Charitable  
 Lead Annuity Trust  
 MVYouth  
 Harold Whitworth Pierce Charitable Trust  
 Richard Saltonstall  
 Charitable Foundation  
 Saquish Foundation  
 Stoddard Charitable Trust  
 Tern Foundation  
 University of Wisconsin  
 Wallace Research Foundation  
 The Willow Tree Fund

**\$10,000-\$24,999**

Anonymous (4)  
 Alces Foundation  
 Arbor Day Foundation  
 Berkshire Taconic Community  
 Foundation



**NATURE HEROES** like you provide scholarships for 1,211 summer campers attending one of our 19 day camps and Wildwood overnight camp

Blue Cross Blue Shield of Massachusetts, Inc.  
 Boston Center for Blind Children  
 E & L Campbell Family Foundation  
 Children's Investment Fund  
 Community Foundation of Western Massachusetts  
 Community Foundation of Western Massachusetts, Elise B. and Earl Bradley Charitable Fund  
 Copeland Family Foundation, Inc.  
 Max and Victoria Dreyfus Foundation, Inc.  
 The Echo Charitable Foundation  
 Mary-Louise Eddy and Ruth N. Eddy Foundation  
 The Edey Foundation  
 The Feigenbaum Foundation  
 Felix Neck Wildlife Trust, Inc.  
 Foundation for MetroWest  
 Marshall Frankel Foundation  
 Greater Worcester Community Foundation  
 Greater Worcester Community Foundation, Rosemary Davis Memorial Fund  
 Guardian Life Insurance Company of America  
 Hanover Insurance Group Foundation, Inc.  
 Harding Educational & Charitable Foundation  
 Francis A. & Jacquelyn H. Harrington Foundation  
 Sigmund E. and Barbara B. Herzstein Fund  
 Institute of Museum and Library Services  
 Intel  
 Helen Sperry Lea Foundation  
 The Loring, Wolcott & Coolidge Charitable Trust  
 Marine Biological Laboratory  
 General William Mayer Foundation, Inc.  
 William J. McKee Jr. Charitable Foundation  
 Medical Information Technology, Inc.  
 Middlesex Savings Charitable Foundation  
 National Wildlife Federation  
 The Peabody Foundation, Inc.  
 Red Acre Foundation  
 The Robbins-de Beaumont Foundation  
 Rockwell Foundation  
 John J. Sacco & Edith L. Sacco Charitable Foundation, Bank of America, N. A., Co-Trustee  
 William E. Simon Foundation  
 Texas A & M University  
 H. E. Thompson Foundation  
 Tiger Baron Foundation  
 Towards Sustainability Foundation  
 The Van Sloun Foundation  
 Edwin S. Webster Foundation

Yawkey Foundation  
 YourCause, LLC

**\$5,000-\$9,999**  
 Anonymous (1)  
 Acadian Asset Management LLC  
 Bruce J. Anderson Foundation  
 Barre Savings Charitable Foundation  
 Beech Tree Trust  
 Belmont Savings Bank Foundation  
 Bird Watcher's General Store  
 Blue Hills Bank Charitable Foundation  
 The Bristol-Myers Squibb Foundation  
 The Caswell Foundation  
 The Ann E. Clark Private Foundation  
 DCU for Kids  
 Alan K. and Isabelle DerKazarian Foundation  
 Ducks Unlimited, Inc.  
 Elm Action Fund  
 J. Irving England & Jane L. England Charitable Trust  
 Fiduciary Trust Company  
 The Fieldstone Foundation, Inc.  
 Foundation M  
 The Goodnow Fund  
 The Guardian Life Insurance Company of America  
 The Hart Foundation  
 Harvard Pilgrim Health Care Foundation  
 Helen G. Hauben Foundation  
 Horizon Foundation, Inc.  
 LeBaron Foundation  
 Thomas H. Lee Management Company, LLC  
 James A. MacGregor Trust  
 A.D. Makepeace Company  
 Janet Malsar Humanities Trust  
 Ramsey McCluskey Family Foundation  
 National Fish & Wildlife Foundation  
 Network for Good  
 Nordson Corporation  
 Northampton Education Foundation  
 Arthur M. & Martha R. Pappas Foundation  
 The Partnership Foundation  
 Margaret Walker Purinton Foundation  
 Sims Metal Management  
 Abbot and Dorothy H. Stevens Foundation  
 Summer Fund  
 The Nellie Leaman Taft Foundation  
 Tufts Health Plan Foundation  
 Margaret Evans Tuten Foundation  
 United Way of Greater New Bedford  
 Westfield State Foundation  
 Wheelabrator Technologies, Inc.  
 Henry T. Wiggin Charitable Trust  
 Wilkinson Ecological Design, Inc.

**\$2,500-\$4,999**  
 Anonymous (3)  
 AbbVie Bioresearch Center  
 Alkermes, Inc.  
 Bank of America Matching Gifts Program  
 Beacon Hill Garden Club  
 Berkshire Environmental Endowment Fund  
 Boston Cares, Inc.  
 Paul and Virginia Cabot Charitable Trust  
 Cape Cod Five Charitable Foundation  
 Cartmell-Davis Funeral & Cremation Services  
 The Chatham Fund of the Cape Cod Foundation  
 Clinton Family Fund  
 Colonial Road Runners  
 Columbia Pictures Industries, Inc.  
 Couch Family Foundation  
 Crimson Hexagon  
 Edith W. and John A. Dockray Charitable Foundation  
 DonateWell  
 EarthShare of New England  
 Feinberg, Campbell & Zack P.C.  
 Fels Family Foundation  
 Forma Therapeutics, Inc.  
 GE Foundation  
 GiveGab, Inc.  
 Greater Worcester Community Foundation, Leicester Savings Bank Fund  
 Green International Affiliates, Inc.  
 Gunst Family Foundation  
 HUB International Limited  
 IBM International Foundation  
 Linders, Inc.  
 Marblehead Neck Association  
 Martha's Vineyard Savings Bank Charitable Fund  
 Massachusetts Outdoor Heritage Foundation, Inc.  
 New England Camping Association, Inc.  
 Newburyport Five Cents Savings Bank  
 NSTAR/Eversource Foundation  
 Nuttall Ornithological Club: Blake-Nuttall Fund  
 Ocean Spray Community Fund  
 The Robert Treat Paine Association  
 Bessie Pappas Charitable Foundation  
 Permanent Endowment Fund for Martha's Vineyard  
 Gertrude A. Pomeroy Charitable Trust  
 Princeton Land Trust  
 Quebec-Labrador Foundation, Inc.  
 Robert B. Our Co., Inc.  
 Schwartz Charitable Foundation  
 Shurtleff Children's Services, Inc.  
 South High Community School  
 Standard Auto Wrecking Co., Inc  
 Sylvan Nursery Inc.  
 The Swan Group  
 Webster Five Foundation  
 Wellfleet SPAT  
 West Concord Union Church  
 Wilson Conservation Trust  
 Workday Foundation  
 Carl Zeiss Optical, Inc.

**\$1,250-\$2,499**  
 Anonymous (1)  
 AIG  
 AmazonSmile Foundation  
 Arcadian Shop, Inc.  
 Belmont Hill School

Berkshire Bank Foundation  
 Bernier's Market, Inc.  
 Boveri-Trackman Family Foundation  
 Bright Funds Foundation  
 Cambridge Community Foundation  
 Chapel of St. James the Fisherman  
 Commerce Bank  
 Cooperative Bank of Cape Cod  
 The Arthur Vining Davis Foundations  
 Dewey Service Corp  
 Eagle Fund & Janet's Fund  
 Fleet Electrical Service, Inc.  
 Friends of Sengekontacket, Inc.  
 Garden Club of the Back Bay, Inc.  
 Global Atlantic  
 Harvard Community Gifts  
 Hoche-Scofield Foundation  
 Hollingsworth & Vose Company  
 Institution for Savings Charitable Foundation  
 Ipswich Bay Glass Company, Inc.  
 The Lenox Garden Club  
 Lincoln Ridge Homeowners Association  
 Moseley Fund for Social Service  
 The Nature Conservancy  
 Our Island Club  
 Patagonia  
 Pledgeling Foundation  
 Schwab Charitable Fund  
 Sensata Technologies  
 State Street Corporation  
 Stearns Charitable Trust  
 Tisbury Waterways, Inc.  
 The Toop Family Fund  
 Verisk Analytics  
 Verizon Foundation  
 W. Vernon Whiteley, Inc.  
 Whole Kids Foundation  
 Wild Birds Unlimited/Danvers  
 Youths Friends Association, Inc.

**Government Agencies and Organizations**

**Local and State**

City of Pittsfield  
 Commonwealth of Massachusetts  
 Executive Office of Energy and Environmental Affairs  
 Department of Agricultural Resources  
 Department of Conservation and Recreation  
 Department of Elementary & Secondary Education  
 Department of Environmental Protection  
 Division of Conservation Sciences  
 Division of Fisheries and Wildlife/ Natural Heritage & Endangered Species Program  
 Division of Ecological Restoration  
 Massachusetts Cultural Council  
 Massachusetts Department of Elementary & Secondary Education  
 Massachusetts Environmental Trust  
 Dukes County  
 MassDevelopment  
 River Stewardship Council  
 Southeast Regional Planning & Economic Development District  
 Town of Chatham  
 Town of Edgartown  
 Town of Falmouth  
 Town of Harwich  
 Town of Hull  
 Town of Marshfield



Town of Sandwich  
Town of Scituate  
Town of Tisbury  
Town of Truro  
Town of Westport  
Town of Yarmouth

#### Federal

Institute of Museum and Library Services  
National Oceanic & Atmospheric Administration  
National Park Service  
National Science Foundation  
River Stewardship Council  
U.S. Department of Agriculture/Natural Resources Conservation Service  
U.S. Environmental Protection Agency  
U.S. Fish & Wildlife Service  
U.S. Geological Survey

#### Bequests

Margery B. Avirett  
Priscilla Archibald  
Richard Bailey  
Lucia L. Cate  
Dorothy Conkey  
Kathleen Coyle  
Anne Donaldson  
Norman Dorian  
Nancy C. Doyle  
William Endicott  
Marjorie E. Forbes  
Priscilla P. Green  
Mary Hitchcock  
Doris R. Holden  
Betty B. Hoskins  
Charlotte Johnson  
Frances Loomis  
Dr. Christopher H. Lovelock  
Christine A. Manns  
Marilyn Mimi S. Murphy  
Ruth Packard  
Katharine S. Plimpton  
Dr. Chandler S. Robbins  
Robert Shlifer  
Ellin Smalley  
Virginia Sprong  
Joanne W. Surgeon

#### The Tern Society

We are honored to list the following individuals who have established a life income arrangement with Mass Audubon or have named the organization as a beneficiary in their will or estate plan. 🌿=member of the Tern Society who passed away this year.

Anonymous (55)  
Diana Abrashkin  
Donna H. Adams  
Jan & John Adams  
Liz & Marc Albert  
Steven W. Allen  
Deborah C. Almy  
Judith Ann Amelotte  
Carol L. Anderson  
Ben & Clarice Andreozzi  
Nicholas C. Arguimbau  
Stuart H. Armstrong & Michael L. Levesque  
Greta & Karl Audenaerde  
Ruth Haskins Bass  
Michael Bean & Andrea Laberis-Bean  
Lolly Bennett  
Jennifer Black & Lora Goldston

Bruce & Doreen Bolnick  
Helen M. Bowdoin  
Sharon & Maurice Brodeur  
K. J. Brower  
Bonnie E. Brown  
Sara H. Brydges  
Robert Buchsbaum  
Ellen Cabot  
Margaret J. Cain  
Betty Carpenter  
Daniel R. Charbonnet  
Nancy Rideout Chisholm  
William J. Claff  
Bill & Libby Cline  
Catherine Coleman & Thomas Mullen  
Caroline & John Cook  
Clifford & Roxanne Cook  
Susan Coolidge  
Richard P. Coonan  
Beth C. Cooper  
Paula Cortes  
Nancy & Modestino Criscitiello  
Martha A. Cutler  
Janet E. Cutman  
Stephen & Mary Beth Daniel  
Philip H. Davis

Paul Guthrie  
Sylvia Charman Guthrie  
Alynn & Andrew Harvey  
C. Hayton  
Gretchen A. Henkel  
Ruth & Robert T. Hucks Jr.  
Nora Huvelle  
Kirsten Hviid  
Elizabeth & Woody Ives  
Carol A. F. Jeffery  
Shirley Muirhead Jenkins  
Marianne Jeppson  
Virginia Jonas & Lester Sackett  
Linda B. Jones  
Virginia Jordan  
Jonathan Kapsten  
Carolyn & Richard Kent  
Maribeth & John Klobuchar  
Ed Koenig  
Chester Kulisa  
Linda Lacki & John Freeman  
Virginia L. Lacy  
Ellen Lahlum  
Miriam G. Lasher  
Joan Lebel  
Elizabeth Lee

Barbara J. Murphy  
Pam Musk  
J. David Officer & Dr. Marcia J. Wade  
Barbara J. Olson  
Karen O'Neill  
Jonathan & Jessie Panek  
Mary Paradiso & Jay Jannell  
Mary F. & Rienzi B. Parker  
Esther Pelletier  
Veronica & Robert Petersen  
Katharine S. Plimpton  
Anne C. Porter  
Helen & William Pounds  
Jeannette Stone Reynolds  
Linda Rezniekiewicz  
Judith A. Robichaud  
Margaret & Dwight Robinson  
Joseph Roche  
Shelley Rodman  
Rev. Lois F. Rose  
Barbara A. Rosen  
Allison Ryan  
Kathleen A. Sacco & Elizabeth R. Sullivan  
Margaret Sagano & Michael Simons  
Barry Schiller  
Naomi & Peter Schmidt  
Robin K. Schweikart & David Farrington  
Karen Seif & Christine Sanni  
Robert Seletsky  
Kathleen Seymour  
Binkley C. Shorts  
Evelyn B. Silver  
Edith & Tom Sisson  
Donna L. Smith  
Theodore S. Smith Jr.  
Patricia E. Spence  
Lisa A. Standley  
Martha Stearns  
Mr. & Mrs. Campbell Steward  
Susan Swartzlander  
John L. Thorndike  
Patricia A. Thornton  
Edna Tilander  
Conrad H. Todd  
Martin & Juliette Touchette  
Teri & Frank Tripp  
Maryjane Tucci  
Kathleen & Peter Van Demark  
Rosamond B. Vaule  
Roberta Hope Waller  
Stephen L. Wasby  
David Weaver  
Liz Nelson Weaver  
Sarah S. Webb  
Nancy L. Weiss, M.D.  
Samuel Welch  
Linda A. Welter  
Bobbi & Bill Whiting  
Emily Wolf

Barbara J. Murphy  
Pam Musk  
J. David Officer & Dr. Marcia J. Wade  
Barbara J. Olson  
Karen O'Neill  
Jonathan & Jessie Panek  
Mary Paradiso & Jay Jannell  
Mary F. & Rienzi B. Parker  
Esther Pelletier  
Veronica & Robert Petersen  
Katharine S. Plimpton  
Anne C. Porter  
Helen & William Pounds  
Jeannette Stone Reynolds  
Linda Rezniekiewicz  
Judith A. Robichaud  
Margaret & Dwight Robinson  
Joseph Roche  
Shelley Rodman  
Rev. Lois F. Rose  
Barbara A. Rosen  
Allison Ryan  
Kathleen A. Sacco & Elizabeth R. Sullivan  
Margaret Sagano & Michael Simons  
Barry Schiller  
Naomi & Peter Schmidt  
Robin K. Schweikart & David Farrington  
Karen Seif & Christine Sanni  
Robert Seletsky  
Kathleen Seymour  
Binkley C. Shorts  
Evelyn B. Silver  
Edith & Tom Sisson  
Donna L. Smith  
Theodore S. Smith Jr.  
Patricia E. Spence  
Lisa A. Standley  
Martha Stearns  
Mr. & Mrs. Campbell Steward  
Susan Swartzlander  
John L. Thorndike  
Patricia A. Thornton  
Edna Tilander  
Conrad H. Todd  
Martin & Juliette Touchette  
Teri & Frank Tripp  
Maryjane Tucci  
Kathleen & Peter Van Demark  
Rosamond B. Vaule  
Roberta Hope Waller  
Stephen L. Wasby  
David Weaver  
Liz Nelson Weaver  
Sarah S. Webb  
Nancy L. Weiss, M.D.  
Samuel Welch  
Linda A. Welter  
Bobbi & Bill Whiting  
Emily Wolf

#### Volunteers

We are grateful to the volunteers who have generously given 250 or more hours of their time this year to assist Mass Audubon in accomplishing our mission.

Ann Allan  
Bill Allan  
Steve Allen  
Annemarie Altman  
Dennis Arseneau  
Patricia Austin  
Sally Avery



Piping Plover © Matt Filosa

**NATURE HEROES** like you inspire **45 Coastal Waterbird staff** who monitor **183 sites** over **140 miles of nesting habitat** for Piping Plovers, terns, and American Oystercatchers

Constance H. Del Gizzi  
Carolyn Dettinger  
Anne Rich Dewees  
Eugene Bicknell Doggett & Nina Lord Doggett  
Anne & David C. Donaldson  
Wendy J. Dwyer  
Anne Eberle  
Jim Ellis & Betty Ann Sharp  
Ronna B. Erickson  
Richard J. Erikson & Laurie S. Miles  
Merry & Ralph Eustis  
Gay Ferguson  
Ronnie S. Fischer & Charles P. Sweet  
Michael J. Foley  
Dale Ford  
Sara Foster  
Cyrus & Joanne Gibson  
Lorna Gibson  
John W. Gintell  
Terry Goplerud  
Diane Asseo Griliches  
Patricia C. Gunning

Lois Lessard  
Corinne M. Lilie  
Martha G. Locke  
Maureen & James Loible  
Christine A. Lojko  
Anne S. Lombard  
Daniel J. Lombardo  
Stephen & Valerie Loring  
Linda & Robert MacIntosh  
Dick & Pat MacKinnon  
Marilyn & Don Malpass  
Mark & Kimberly Marroni  
Ellen M. McBride  
Margaret McBride  
Tim & Sheryl McMullen  
Jane W. Mead  
Julianne Mehegan  
Heidi Meyer  
Laurie Miles  
Mary C. Moran  
Kathleen Morehead  
Adrianna Morris  
Barbara Munkres



**NATURE HEROES** like you advocate for **173 communities** to adopt the **Community Preservation Act (CPA)** since we successfully helped write and pass this legislation 18 years ago

Francesca Belouin  
 Bill Bernbeck  
 Isabel Berzansky  
 Brendan Blumenstiel  
 Richard Boroff  
 Leslie Bostrom  
 Shelagh Brady  
 Barbara Brennessel  
 Vasha Brunelle  
 Brad Conant  
 James Condon  
 Fred Constanza  
 Bess Dillman  
 Lee Domont  
 Janet Drohan  
 Jean-Marc Dupon  
 Paul Emond  
 Ellen Forbes  
 Robert French  
 Bill Gette  
 Margaret Gibbs  
 Allan Greenberg  
 Alain Grenier  
 Meredith Harris  
 Mary Lou Heintz  
 Jerry Hequembourg  
 Libby Herland  
 Barbara Hilsinger  
 William Hobbie, DVM  
 Judith Holt  
 Donna Jones  
 Gary Krol  
 Miriam Lasher  
 Sanford Leslie  
 Jeanne Li

Gloria Lima  
 David Lyon  
 Kevin Martone  
 Mike McWade  
 Warren Mumford  
 Dorothy Norregaard  
 Kim Novino  
 Tim O'Brien  
 Veronica O'Neil  
 Jacqueline Pascucci  
 Anne Patterson  
 Nancy Rabke  
 Willa Rapp  
 Susan Reiher  
 Marj Rines  
 Jan Ruby-Crystal  
 Ian Schmidt  
 Jane Sender  
 Kathy Seymour  
 Al Sgroi  
 Gal Shalev  
 Susan Silva  
 Patti Spector  
 Judith Spelke  
 Ava Steenstrup  
 Liz Stell  
 Diana Stinson  
 Susan Straight  
 Sheila Vince  
 Peder von Harten  
 Dave Weaver  
 Shirley Weber  
 Su Wilson

## Mass Audubon Board of Directors 2018

**Chair** Jared Chase

**Vice Chairs**

Beth Kressley Goldstein • Christopher Klem

**President** Gary Clayton

**Corporate Secretary** Ellen McBride

**Assistant Corporate Secretaries**

Kristin Barr • Elaine Kile

**Treasurer** Robert P. Ball

**Assistant Treasurers**

Nora Frank • Jan O'Neil • Bancroft R. Poor

**Directors**

Robert P. Ball  
 Peter Bernard  
 Tracey Bolotnick  
 Catherine M. Campbell  
 Jared Chase  
 Donald D. Cooper  
 Paula V. Cortes  
 Nicholas d'Arbeloff  
 Thomas A. DeMarco III  
 Birgitta Dickerson  
 Kathleen Emrich  
 Andrew J. Falender  
 Lorna Gibson  
 Christopher Klem  
 Beth Kressley Goldstein  
 Kevin McLellan  
 William P. McQuillan  
 Robert Murchison  
 Michael J. Pappone  
 James A. Saalfeld  
 Anne Snyder  
 Jim Sperling  
 Rosamond B. Vaule  
 Randolph Wentworth  
 Henry Woolsey  
 Delphine Zurkiya

**Council Co-Chairs**

Catherine Campbell  
 Donald Cooper

**Council**

Mark Adamczyk  
 Stuart H. Armstrong  
 Dennis Arseneau  
 James Baird  
 Marygrace Barber  
 Peter Barber  
 Charles A. Barry  
 Jerry Berrier  
 Robert Bertin  
 Jerry Bird  
 Bruce Black  
 Shawn P. Carey  
 Elliott G. Carr  
 Alfred D. Chandler III  
 Jennifer Charles  
 Richard S. Chute  
 John W. Cobb  
 David C. Cole  
 Donna J. Cooper  
 Edmund P. DeLaCour  
 Nina L. Doggett  
 Scott Edwards  
 Alexander Ellis III  
 Barbara E. Fargo  
 Len Fishman  
 Kate S. Flather  
 R. T. T. Forman  
 Bruce Fulford  
 Thaddeus R. Gillespie  
 Elizabeth Gilmore  
 John Green  
 John S. Hammond\*  
 Harry A. Hanson III  
 Alynn Harvey  
 Elizabeth H. Hejde  
 Terilyn Henderson  
 Chris R. Heye  
 Virginia S. Hibbard  
 Brian Hicks  
 Maria Higgins  
 Annie Hollingsworth  
 James S. Hoyte  
 Nora F. Huvelle  
 Elizabeth Ives  
 Richard E. Johnson  
 Linda B. Jones  
 Patricia Spinney Joyce  
 Jared S. Keyes  
 Erik Knutzen  
 Virginia M. Lawrence  
 Edwin F. Leach  
 Alexandra Lee  
 Ann M. Lewis  
 Matthew Lindley  
 Allegra Lowitt  
 David Lubin  
 Joseph Lynch  
 William F. Macauley  
 William P. Madar  
 Mary McFadden  
 Carol McGarry  
 Julianne Mehegan  
 Deborah H. Miller  
 Stephen W. Miller  
 Christopher Neill  
 Albert Nierenberg  
 Sheila Nutt, Ed.D.  
 Ronald P. O'Hanley  
 David O'Neil  
 J. David Officer  
 Jonathan Panek  
 Jeffrey F. Peters  
 Alexander Platt  
 Phyllis Pollack  
 Helen Pounds  
 George Putnam III  
 Walter Rosenfeld\*  
 Douglas Sacra  
 Judy A. Samelson  
 David Sibley  
 Phyl Solomon  
 Nancy B. Soulette  
 Lee Spelke  
 Patricia E. Spence  
 Lisa A. Standley  
 Brooke Stevens  
 William Stevenson  
 Craig Tateronis  
 Lanny Thorndike  
 Marian Thornton  
 Patricia A. Thornton  
 Elizabeth H. Valentine  
 Eric N. Ward  
 Alan Wilson  
 Julia K. Yoshida  
 John Young

**Honorary Directors**

Kathleen Anderson\*  
 Robert C. Baron  
 Alfred D. Chandler III  
 Richard S. Chute  
 Franz Colloredo-Mansfeld  
 Hamilton Coolidge  
 Eugene B. Doggett

Nina L. Doggett  
 Nancy Bush Ellis  
 Barbara E. Fargo  
 Thomas D. French  
 John C. Fuller  
 John Green  
 Terilyn Henderson  
 Deborah V. Howard  
 Nora F. Huvelle  
 Shirley M. Jenkins  
 Erik Knutzen  
 Virginia M. Lawrence  
 Henry R. Lee  
 James N. Levitt  
 Ellen Lovejoy  
 Merloyd Ludington  
 William P. Madar  
 Deborah W. Moses  
 J. David Officer  
 Jonathan Panek  
 Jeffrey F. Peters  
 Helen Pounds  
 George Putnam III  
 John W. Riehl  
 Walter Rosenfeld\*  
 Judy A. Samelson  
 Lee Spelke  
 David Starr  
 David A. Straus  
 Jeffrey Swope  
 John L. Thorndike  
 Marian Thornton  
 Patricia A. Thornton  
 Elizabeth H. Valentine  
 Emily Wade  
 Chip Walker  
 David H. Walsh  
 Thomas T. Warren  
 Nancy L. Weiss  
 Dudley H. Willis  
 Alan Wilson

\* An individual who passed away this year

The list reflects our Governance members as of June 30, 2018. For the most updated list, please visit [massaudubon.org/governance](http://massaudubon.org/governance)

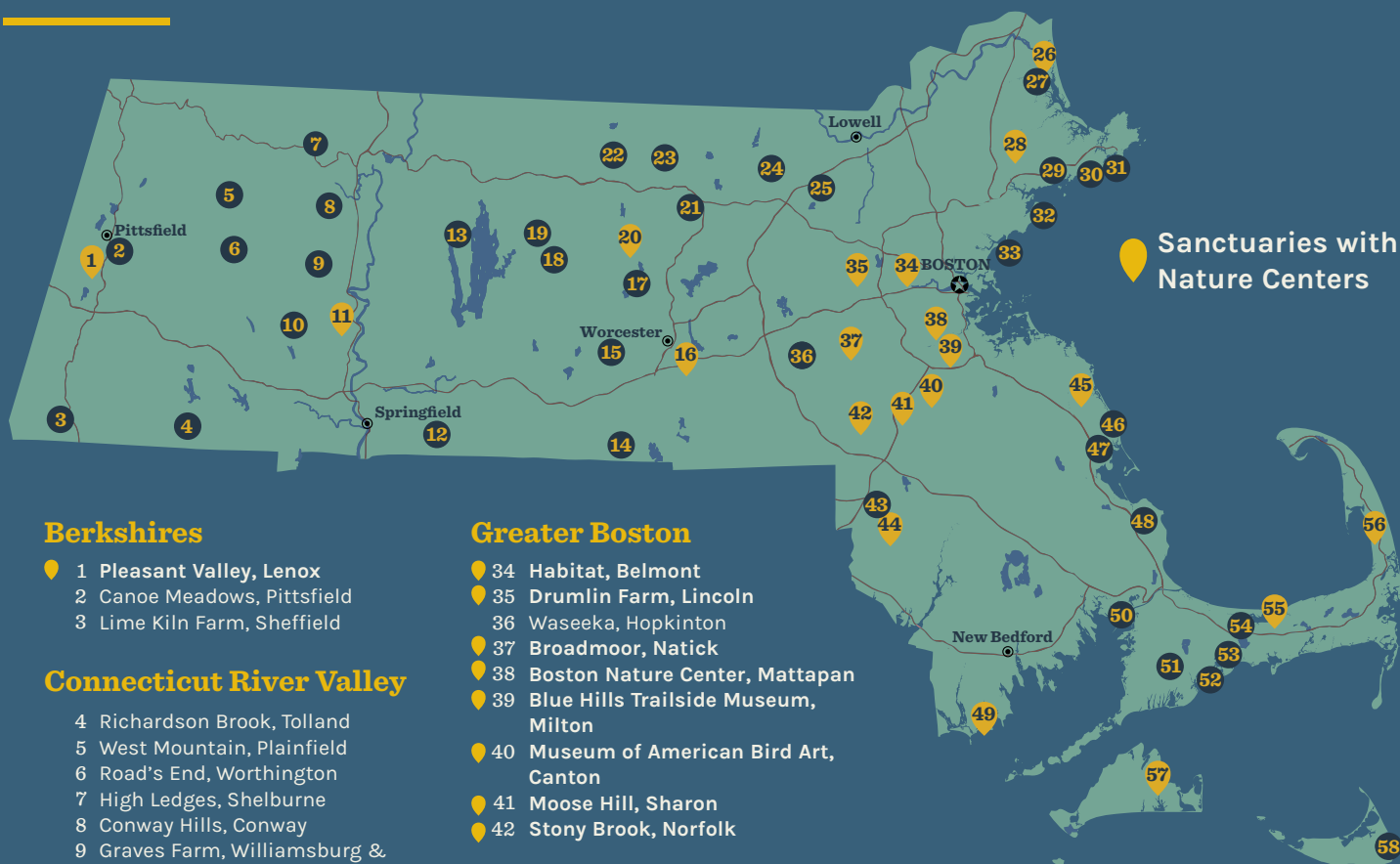
Mass Audubon  
 208 South Great Road  
 Lincoln, MA 01773  
 781-259-9500  
[massaudubon.org](http://massaudubon.org)

© Mass Audubon 2018



# Mass Audubon

## Wildlife Sanctuaries, Nature Centers, and Museums



### Berkshires

- 1 Pleasant Valley, Lenox
- 2 Canoe Meadows, Pittsfield
- 3 Lime Kiln Farm, Sheffield

### Connecticut River Valley

- 4 Richardson Brook, Tolland
- 5 West Mountain, Plainfield
- 6 Road's End, Worthington
- 7 High Ledges, Shelburne
- 8 Conway Hills, Conway
- 9 Graves Farm, Williamsburg & Whately
- 10 Lynes Woods, Westhampton
- 11 Arcadia, Easthampton & Northampton
- 12 Laughing Brook, Hampden

### Central Massachusetts

- 13 Poor Farm Hill, New Salem
- 14 Pierpont Meadow, Dudley
- 15 Burncoat Pond, Spencer
- 16 Broad Meadow Brook, Worcester
- 17 Eagle Lake, Holden
- 18 Cook's Canyon, Barre
- 19 Rutland Brook, Petersham
- 20 Wachusett Meadow, Princeton
- 21 Lincoln Woods, Leominster
- 22 Lake Wampanoag, Gardner
- 23 Flat Rock, Fitchburg
- 24 Rocky Hill, Groton
- 25 Nashoba Brook, Westford

### North Shore

- 26 Joppa Flats, Newburyport
- 27 Rough Meadows, Rowley
- 28 Ipswich River, Topsfield
- 29 Endicott, Wenham
- 30 Kettle Island, Manchester-by-the-Sea
- 31 Eastern Point, Gloucester
- 32 Marblehead Neck, Marblehead
- 33 Nahant Thicket, Nahant

### Greater Boston

- 34 Habitat, Belmont
- 35 Drumlin Farm, Lincoln
- 36 Waseeka, Hopkinton
- 37 Broadmoor, Natick
- 38 Boston Nature Center, Mattapan
- 39 Blue Hills Trailside Museum, Milton
- 40 Museum of American Bird Art, Canton
- 41 Moose Hill, Sharon
- 42 Stony Brook, Norfolk

### South of Boston

- 43 Attleboro Springs, Attleboro
- 44 Oak Knoll, Attleboro
- 45 North River, Marshfield
- 46 Daniel Webster, Marshfield
- 47 North Hill Marsh, Duxbury
- 48 Tidmarsh, Plymouth
- 49 Allens Pond, Dartmouth & Westport
- 50 Great Neck, Wareham

### Cape Cod & the Islands

- 51 Ashumet Holly, Falmouth
- 52 Sampsons Island, Barnstable
- 53 Skunknett River, Barnstable
- 54 Barnstable Great Marsh, Barnstable
- 55 Long Pasture, Barnstable
- 56 Wellfleet Bay, Wellfleet
- 57 Felix Neck, Edgartown
- 58 Sesachacha Heathlands, Nantucket

Sanctuaries with Nature Centers

Mass Audubon protects 38,000 acres of land throughout Massachusetts, saving birds and other wildlife, and making nature accessible to all. As Massachusetts' largest nature conservation nonprofit, we welcome more than a half million visitors a year to our wildlife sanctuaries and 20 nature centers. From inspiring hilltop views to breathtaking coastal landscapes, serene woods, and working farms, we believe in protecting our state's natural treasures for wildlife and for all people—a vision shared in 1896 by our founders, two extraordinary Boston women. Today, Mass Audubon is a nationally recognized environmental education leader, offering thousands of camp, school, and adult programs that get over 225,000 kids and adults outdoors every year. With more than 125,000 members and supporters, we advocate on Beacon Hill and beyond, and conduct conservation research to preserve the natural heritage of our beautiful state for today's and future generations. We welcome you to explore a nearby sanctuary, find inspiration, and get involved. Learn how at [massaudubon.org](http://massaudubon.org).

### Connect With Us





Mass Audubon's 2017 Photo Contest  
*Grand Prize Winner*



Ruby-throated Hummingbird © Bernard Creswick

[massaudubon.org/picturethis](http://massaudubon.org/picturethis)