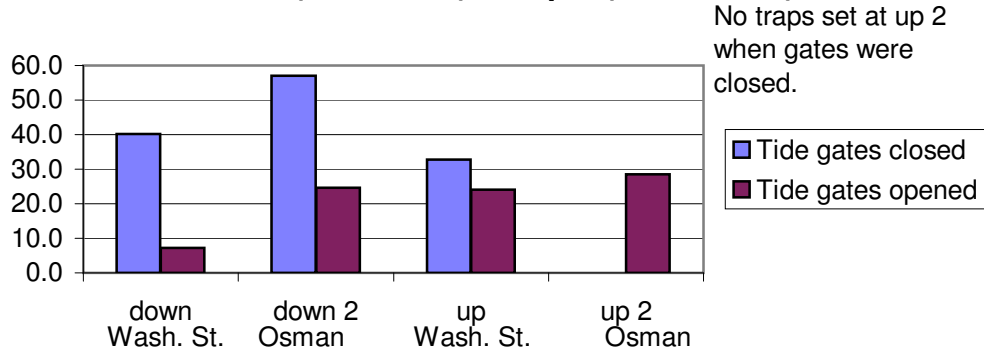
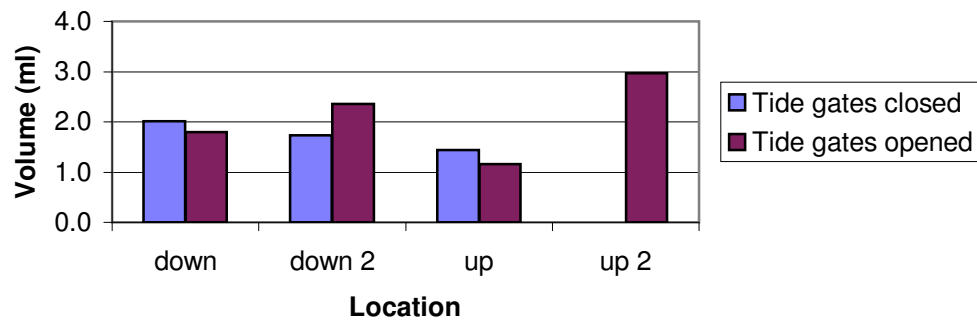


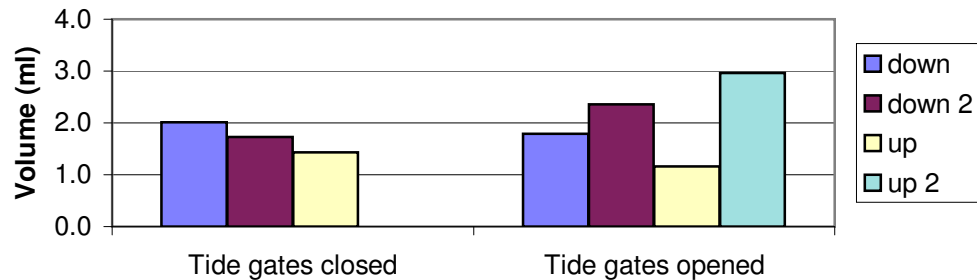
Mill Pond, Gloucester Average number of Mummichogs vs. location and tide gate position Closed(1998-2001) vs Open(2005, 2006)



Mill Pond, Gloucester Average Mummichog Volume 1998-2001, 2005, 2006 vs. area and Treatment

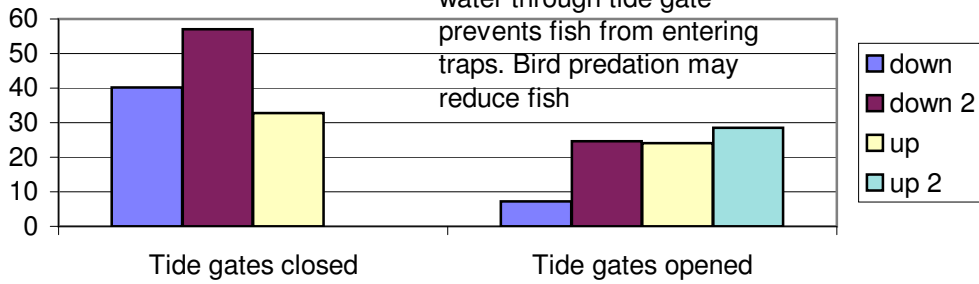


Mill Pond, Gloucester Ave. Volume of Mummichogs vs. Tide gate position Closed (1998-2001), Open (2005, 2006)

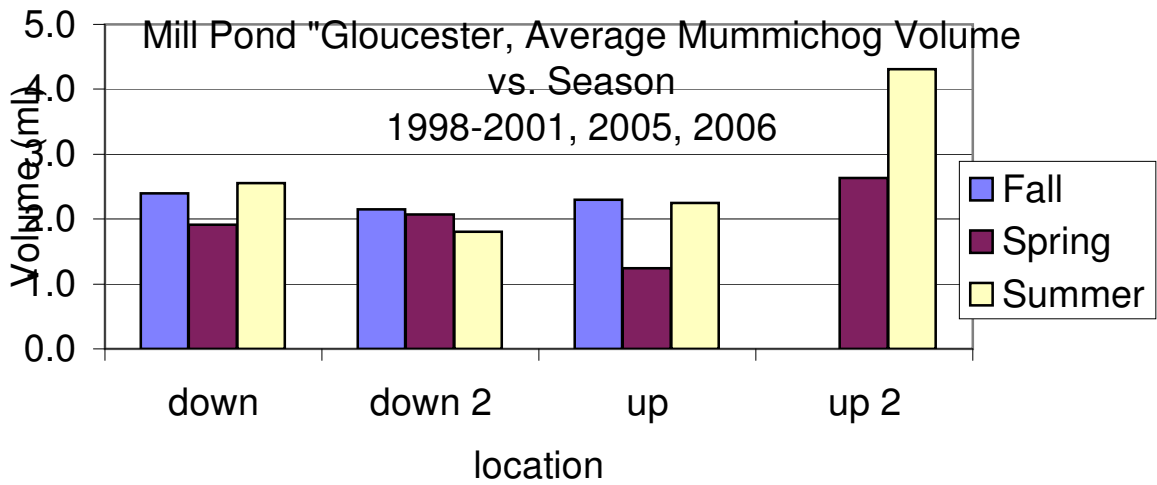


Mill Pond, Gloucester Average number of mummichogs caught 1998-2001=closed, 2005, 2006=open

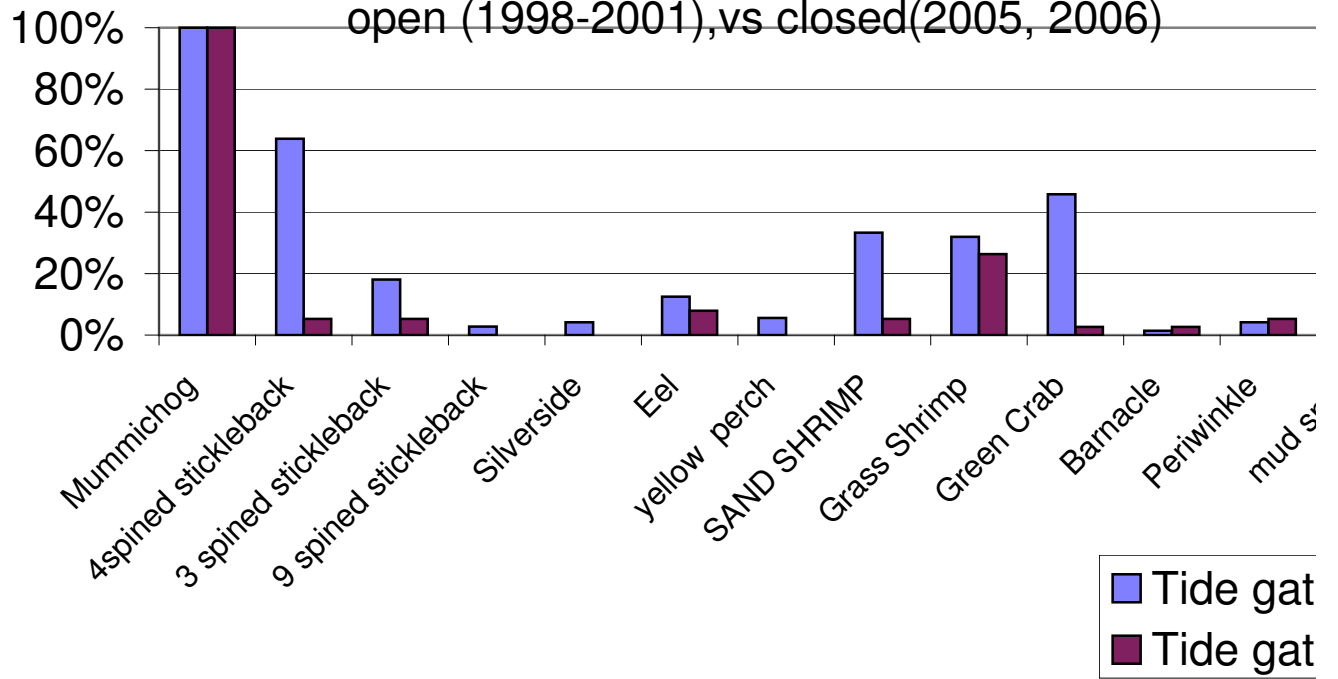
Hypothesis: Rapid speed of water through tide gate prevents fish from entering traps. Bird predation may reduce fish



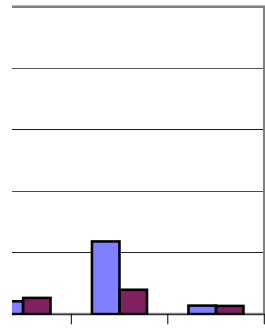
Mill Pond Gloucester, Average Mummichog Volume vs. Season 1998-2001, 2005, 2006



Mill Pond Gloucester, Percent Frequencies of species gat open (1998-2001), vs closed(2005, 2006)



gates



gates closed
gates open