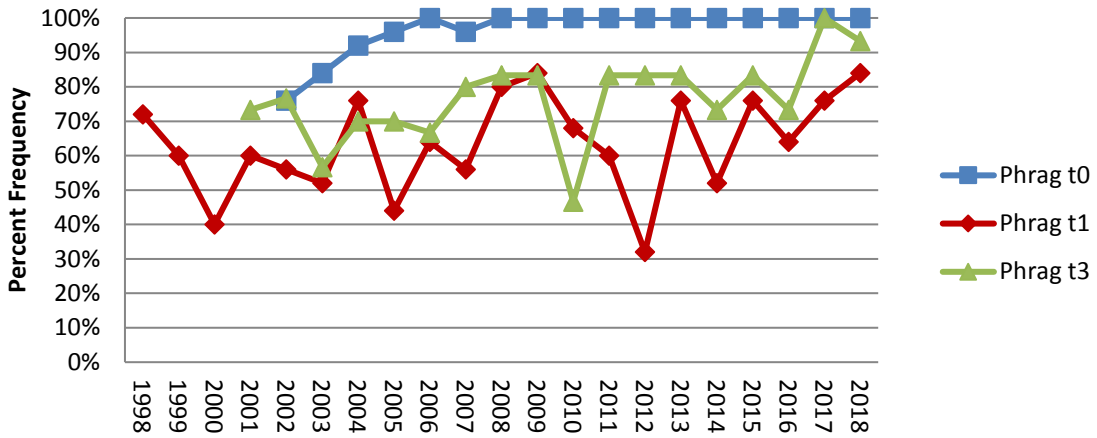
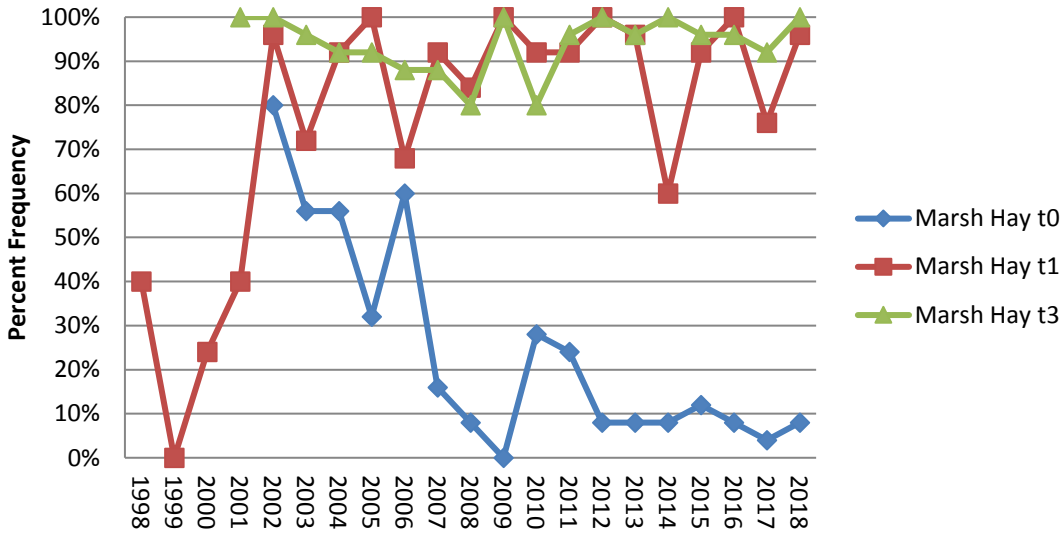


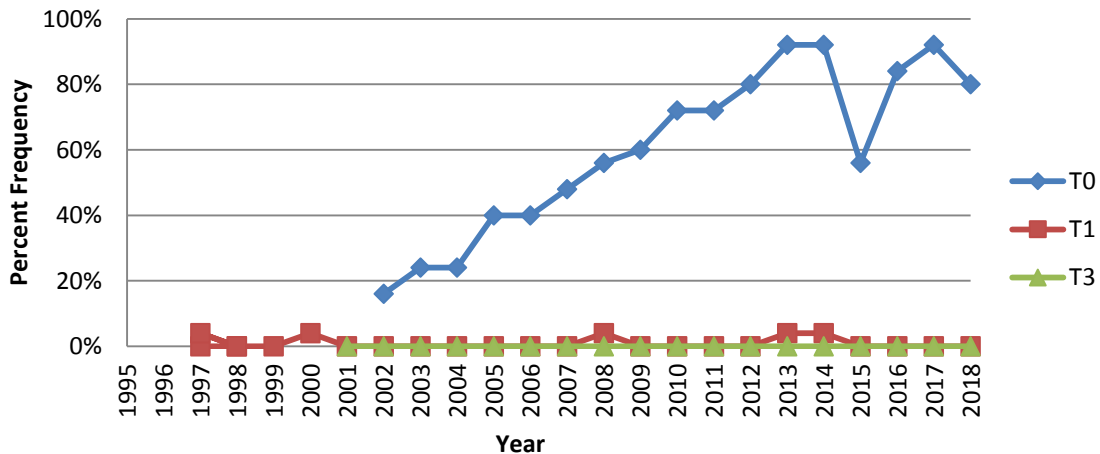
Phragmites Danvers



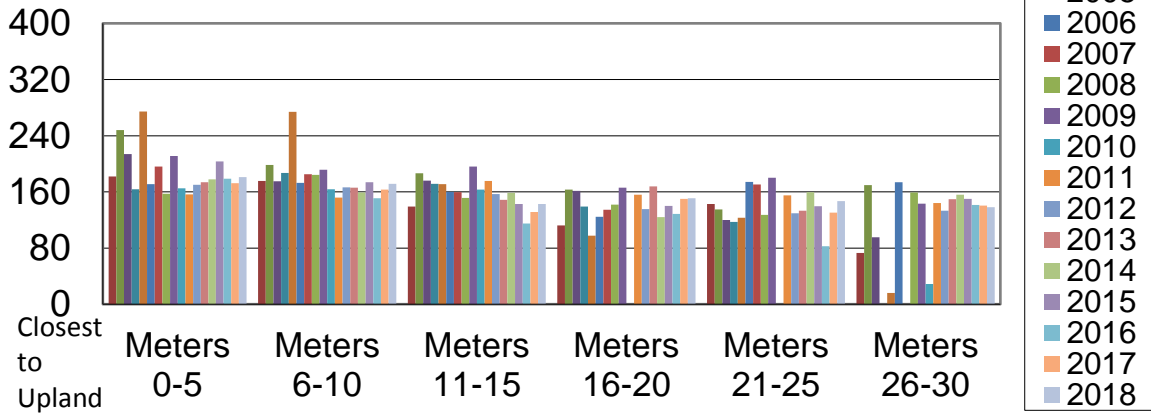
Salt Marsh Hay Danvers



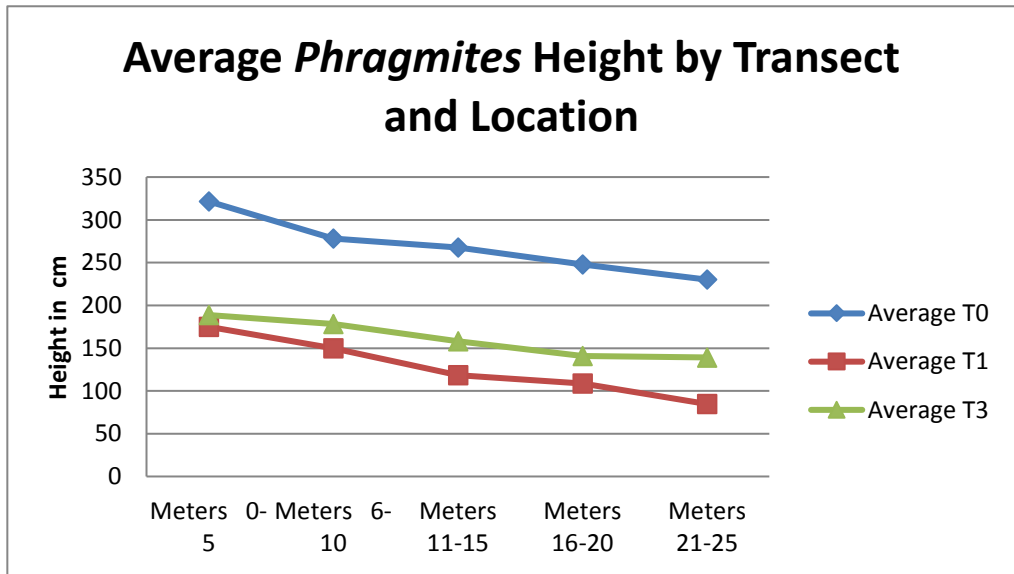
% Phragmites monoculture Danvers



Average *Phragmites* Heights, Transect 3, Osram
 Sylvania, Danvers
 2001-2018



Average *Phragmites* Height by Transect
 and Location



Transect 1 Danvers	Orach <i>Atriplex patula</i>	1997																				1	4%	
	1998																						0	0%
	1999																						11	44%
	2000																						1	4%
	2001																						0	0%
	2002																						0	0%
	2003																						0	0%
	2004																						0	0%
	2005																						5	20%
	2006																						0	0%
	2007																						0	0%
	2008																						0	0%
	2009																						0	0%
	2010																						0	0%
	2011																						0	0%
	2012																						0	0%
	2013																						0	0%
	2014																						1	4%
	2015																						0	0%
	2016																						0	0%
2017																						1	4%	
2018																						0	0%	
2019																						0	0%	
Transect 1 Danvers	Glasswort <i>Salicornia europaea</i>	1997																				0	0%	
	1998																						0	0%
	1999																						1	4%
	2000																						0	0%
	2001																						0	0%
	2002																						11	44%
	2003																						0	0%
	2004																						1	4%
	2005																						6	24%
	2006																						1	4%
	2007																						5	20%
	2008																						12	48%
	2009																						2	8%
	2010																						19	76%
	2011																						0	0%
	2012																						1	4%
	2013																						0	0%
	2014																						1	4%
	2015																						19	76%
	2016																						1	4%
2017																						1	4%	
2018																						2	8%	
2019																						0	0%	
Transect 1 Danvers	Sea Lavender <i>Limonium nashii</i>	1997																				5	20%	
	1998																						4	16%
	1999																						6	24%
	2000																						1	4%
	2001																						5	20%
	2002																						1	4%
	2003																						0	0%
	2004																						7	28%
	2005																						2	8%
	2006																						1	4%
	2007																						0	0%
	2008																						0	0%
	2009																						0	0%
	2010																						0	0%
	2011																						0	0%
	2012																						0	0%
	2013																						0	0%
	2014																						0	0%
	2015																						0	0%
	2016																						0	0%
2017																						0	0%	
2018																						0	0%	
2019																						0	0%	

Seaside Arrowgrass <i>Triglochin maritima</i>	1997										1																									6	24%	
	1998										1																										0	0%
	1999																																				0	0%
	2000																																			0	0%	
	2001																																			0	0%	
	2002																																			0	0%	
	2003																																			0	0%	
	2004																																			0	0%	
	2005																																			0	0%	
	2006																																			0	0%	
	2007																																			0	0%	
	2008																																			0	0%	
	2009																																			0	0%	
	2010																																			0	0%	
	2011																																			0	0%	
	2012																																			0	0%	
	2013																																			0	0%	
	2014																																			0	0%	
	2015																																			0	0%	
	2016																																			0	0%	
2017																																			0	0%		
2018																																			0	0%		
2019																																			0	0%		
Seaside Goldenrod <i>Solidago sempervirens</i>	2003																		1	1	1	1													5	20%		
	2004																																			0	0%	
	2005																																			4	16%	
	2006																																			0	0%	
	2007																																			0	0%	
	2008																																			0	0%	
	2009																																			0	0%	
	2010																																			0	0%	
Transect 1 Danvers	2011																																			0	0%	
	2012																																			0	0%	
	2013																																			0	0%	
	2014																																			0	0%	
	2015																																			0	0%	
	2016																																			0	0%	
	2017																																			0	0%	
	Saltmarsh Cordgrass <i>Spartina alterniflora</i>	2009																											1								1	4%
2010																																				0	0%	
2011																																				0	0%	
2012																																				0	0%	
2013																																				0	0%	
2014																																				0	0%	
2015																																				0	0%	
2016																																				0	0%	
2017																																			0	0%		
	1	2	3	4	5	6	7	8	9	10	11	12	13	14	15	16	17	18	19	20	21	22	23	24	25													

upland end

1 METER SEGMENTS

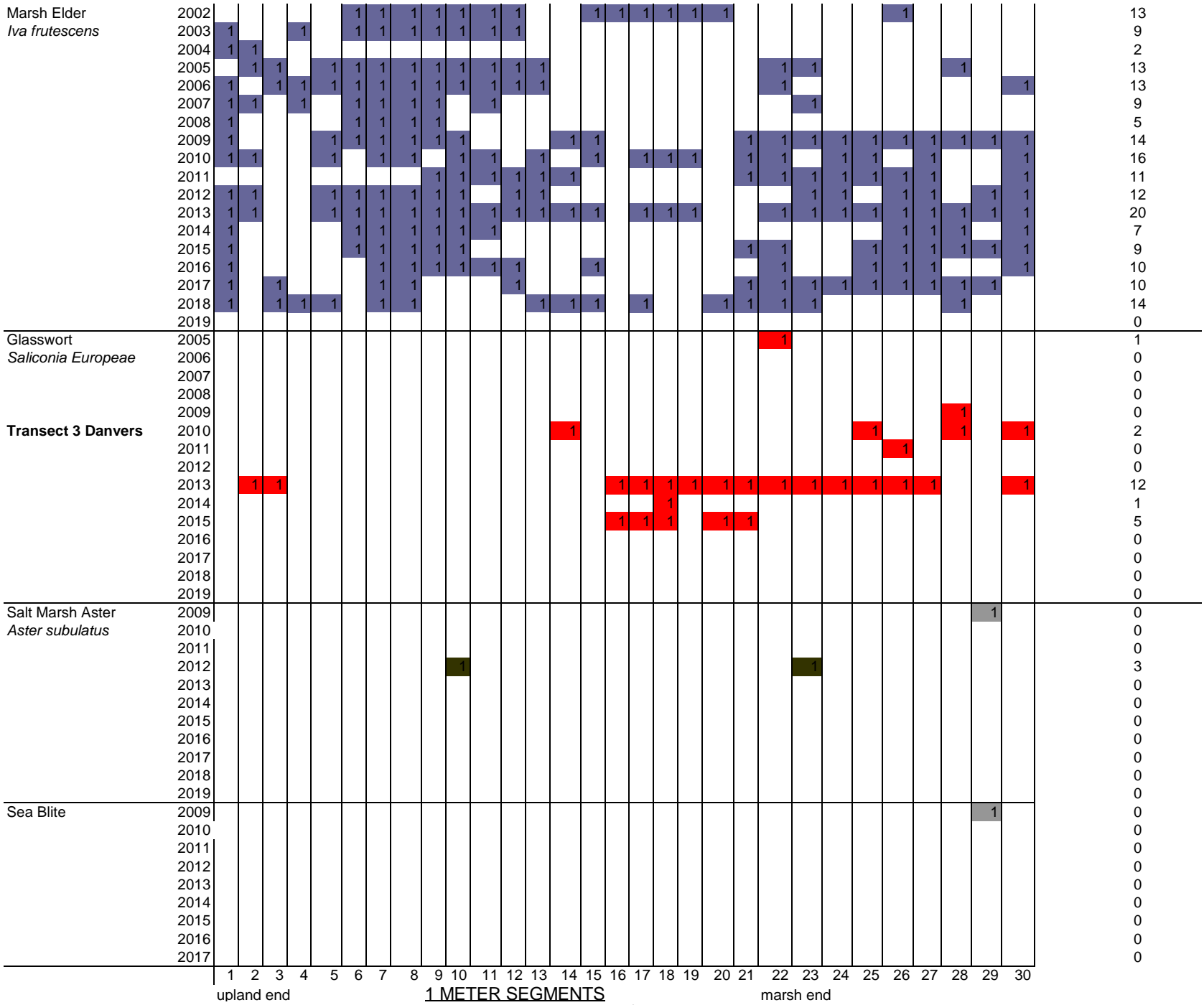
marsh end

Long Range Phragmites Study

Transect 1 - distribution of species

Mass Audubon SMS

Location: Danvers: Osram Sylvania Now Mass General



Long Range Phrah=gmites Study
 Mass Audubon, Salt Marsh Science Project
 Location: Danvers: Osram Sylvania Now Mass General