

*Where to Find
Shaping the Future of
Your Community*

For online access to a full copy of *Shaping the Future of Your Community* visit:

www.massaudubon.org/shapingthefuture

If you have questions, comments, or would like to order a hard copy of the document or find out more about how we can help you to achieve your vision for the future of your community, please contact:

Email: shapingthefuture@massaudubon.org
Phone: 781-259-2146

“Never doubt that a handful of committed people can change the world. Indeed, it is the only thing that ever has.”

~Margaret Mead



Kathy Sferra ©

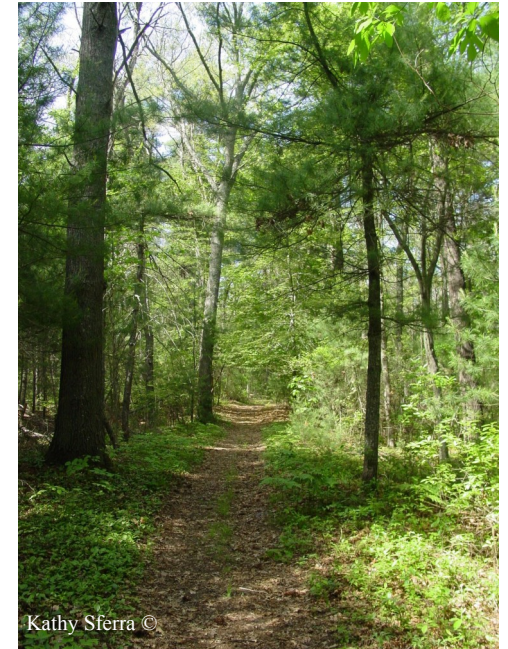


Printed on recycled paper


Mass Audubon
Protecting the Nature of Massachusetts
208 South Great Road
Lincoln, MA 01773

*Shaping the
Future of
Your
Community*

*A Citizen's Guide to Involvement
in Community Planning, Land
Protection, and Project Review
in Massachusetts*



Kathy Sferra ©

E. Heidi Ricci
Senior Policy Analyst

John J. Clarke
Director of Public Policy
& Government Relations

 Mass Audubon
Protecting the Nature of Massachusetts

The Challenge: Losing Ground

Over the past 40 years, the landscape of Massachusetts has been dramatically transformed. In June 2009, Mass Audubon released *Losing Ground: Beyond the Footprint*, the fourth in a series of reports documenting changes in Massachusetts' land-use and exposing the harsh reality of habitat loss and sprawl. New houses being built today are bigger and more energy-intensive than ever, and the growth of the Sprawl Frontiers continues to threaten many of our more rural communities and watershed areas.

The result is sprawling development that:

- Destroys and fragments wildlife habitats and ecosystems
- Reduces biodiversity
- Damages drinking-water recharge areas
- Limits recreational, agricultural, and forestry opportunities
- Alters local community character and our sense of place
- Increases transportation and energy costs.

Solutions are available

Shaping the Future of Your Community gives you the tools you need for active involvement in your community's planning efforts. Using this guide, you can craft and implement effective strategies to:

- Update and implement community plans
- Identify and protect the highest priority lands and water resources
- Provide incentives for well-planned growth
- Establish and apply standards to minimize the impacts of development

Shaping the Future of Your Community

Chapter 1: How to be an Effective Advocate

Tips on maximizing your impact, from brushing up on land-use laws to working with local boards and organizing with other concerned citizens.

Chapter 2: Who's Who of Local, Regional, State, and Federal Management and Environmental Agencies

A guide to the government groups involved in land-use planning

Chapter 3: Local Land Use Planning and Conservation Strategies

Understanding how to successfully balance development with open space protection

Chapter 4: Zoning, Regulatory Land Use Controls, and Incentives

You get what you zone for: familiarize yourself with terminology and innovative land use tools

Chapter 5: Land Protection

A crash course in some of the most common techniques and funding sources for preserving natural spaces

Chapter 6: Project Review and Permitting

Before development can begin, a project must go through review and receive a permit. Find out what steps are involved and how you can participate to improve results.

Federal, State, and Local Laws Chart

This easy-to-use chart helps to quickly identify the programs and policies relevant to your situation

Outreach and Assistance Program

Mass Audubon's *Shaping the Future of Your Community Outreach and Assistance Program* can help you chart a more sustainable future for your community.

Offering community workshops and town-specific data on land-use and development patterns, the program can give you the tools you need for active involvement in guiding your community's development, helping you to make a difference in your town's future.

For a current workshop schedule and more on how we can help you achieve your vision for the future of your town, visit www.massaudubon.org/shapingthefuture/outreach, and contact us at shapingthefuture@massaudubon.org or 781-259-2146.

