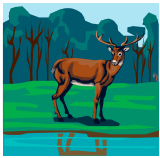


Homeschool Programs

2009 – 2010



**Monday Morning
Life and Earth Science Classes**
For ages 7 – 11



Monday Afternoon Art Classes
For ages 7 – 11



Tuesday Travels
For ages 10–14



Moose Hill Wildlife Sanctuary

293 Moose Hill Street, Sharon, MA 02067

781-784-5691; www.massaudubon.org/moosehill

To Register

Mail or bring this completed form to **Moose Hill Wildlife Sanctuary, 293 Moose Hill Street, Sharon, MA 02067**

- Programs require paid registration at least one week before the start date.
- To receive a refund, you must notify us of your cancellation at least 7 days before the program starts. There is no refund or transfer of fees for non-attendance of any part of a series once it begins.

One child per form, please

Child's Name _____

Sex ____ DOB _____ Age ____ Grade ____

Guardians' Names _____

Address _____

Town/State/Zip _____

Phone (circle: day evening cell) _____

Email (required) _____

Mass Audubon # _____ exp _____

Program title _____ \$ _____

Program title _____ \$ _____

Program title _____ \$ _____

- I plan on registering my child for all/the majority of the Monday Morning Life and Earth Science programs.
- I plan on registering my child for all/the majority of the Monday Afternoon Art programs
- I plan on registering my child for all/the majority of the Tuesday Travel programs

Mass Audubon Family Membership (\$58.00) \$ _____

Total enclosed \$ _____

Check # _____

Mastercard or Visa # _____ Exp _____

Signature _____ I agree to allow Mass Audubon to charge my account in the amount specified herein.

Tuesday Travels

For Ages 10 – 14

- 🚗 *These classes combine programming at Moose Hill Wildlife Sanctuary in Sharon, MA with an off-site field trip. **Please register at least one week in advance.** These classes need five students to run and fill with ten. Transportation will be in Mass Audubon vehicles.*
- 🚗 *The programs are designed for homeschooled children who can participate in the learning activities without an aide.*
- 🚗 *If Sharon schools are canceled because of the weather then Moose Hill is closed that day.*
- 🚗 *Students need to bring a snack, lunch, and filled water bottle. Wear sturdy sneakers or hiking boots and dress in layers. Electronic devices should remain at home.*
- 🚗 *Health history and release forms must be filled out for new and returning participants once each year (running June '09 – May '10).*
- 🚗 *There is no refund or transfer of fees for non-attendance of a program or part of a program.*

Forest Physics

October 6 and 20, 2009; 9:30 a.m. to 2:30 p.m.

Cost: \$85 members; \$20 non-refundable deposit

Explore transpiration, capillary action, turgor pressure, seed dispersal mechanisms, and other aspects of tree mechanics through games, activities, and experiments. Vote for the forest we will travel to the second class.



Rock and Roll

November 3 and 17, 2009; 9:30 a.m. to 2:30 p.m.

Cost: \$95 members; \$20 non-refundable deposit



We will be on the road for parts of both classes to look at roadside and public park geology in Massachusetts and Rhode Island. Learn how to locate and interpret New England's geologic past through its rocks and landforms.

Up-cycling

December 8 and 15, 2009; 9:30 a.m. to 2:30 p.m.

Cost: \$95 members; \$20 non-refundable deposit



You reuse, reduce, and recycle. Now, try your hand at up-cycling, turning a worn out or damaged item into something new and different – chipped plates become trivets, stained tee shirts become yarn knit into potholders. We'll visit Fuller Craft Museum and a thrift store the first class for inspiration. During the second class, you'll use your creativity to reinvent your materials.

Edible Science

January 5 and 19 & February 2 and 9, 2010; 9:30 a.m. to 2:30 p.m.

Cost: \$180 members; \$40 non-refundable deposit

Make bread, cheese, root beer and a few other tasty treats while learning the science of yeast, fungus, protein, etc. This four-meeting class will take trips to large grocery stores as well as specialty shops.



Peep Science

March 2 and 16, 2010; 9:30 a.m. to 2:30 p.m.

Cost: \$85 members; \$20 non-refundable deposit

Practice using the scientific method and your sense of humor while exploring chemistry and physical science with experiments you design featuring those sugar-coated marshmallow creatures. Field trip to umm...?



Phenology – Plant and Animal Life Cycles

April 13 and 27, 2010; 9:30 a.m. to 2:30 p.m.

Cost: \$85 members; \$20 non-refundable deposit

Phenology is the study of how plant and animal life cycles are influenced by seasonal and yearly variations in the climate. Learn the techniques to become an astute observer of nature and discover how scientists can use your observations. Vote for the location we will travel to for the second class.

Photographing Nature

May 11 and 25, 2010; 9:30 a.m. to 2:30 p.m.

Cost: \$95 members; \$20 non-refundable deposit

Bring your digital camera as we travel both days to different Mass Audubon sanctuaries that request photographs recording the unique characteristics of their sanctuaries. You download your best photos to a disk that will be sent to those sanctuaries. If they use your photograph, you will get credit.



Monday Morning Life and Earth Sciences

- Register for classes by the topic or save money by registering for a series. For a full description of the topics, email scaplan@massaudubon.org
- Please register at least one week in advance to insure that the program will run. Any class without a minimum of five students may be cancelled.
- The programs are designed for homeschooled children who can participate in the learning activities without an aide.
- If Sharon schools are canceled because of the weather then Moose Hill is closed that day.
- Bring a snack and a water bottle. Outdoor exploration is a part of each class, so wear sturdy sneakers or hiking boots and dress in layers.
- There is no refund or transfer of fees for non-attendance of a program or for part of a program.

These classes for ages 7 – 11; see details above

All classes held from 9:30 a.m. to noon

Cost for individual classes: \$20; non-refundable/non-transferable deposit \$5

Discounted cost for 4-class themed series: \$75; non-refundable/non-transferable deposit \$20

Underground Science

Experiments show you the characteristics of soil and how that affects the animals that live in leaf litter and below ground.

September 21 – Earthworm Investigations

October 5 – Isopod Investigations (roly poly/pill bugs)

October 19 – Soil Science

October 26 – Hands-on Herps (amphibian & reptile characteristics)



Weather

Study the four interacting atmospheric conditions that create weather. Make tools for observing these conditions.

November 2 – Heat

November 9 – Air Pressure

November 16 – Wind

November 23 – Clouds



Winter Survival

Games and experiments help you understand how animals endure the weather and adapt to climate.

December 7 – Mammals and Birds that Stay Active

December 14 – Migration

January 4 – Hibernation

January 11 – Amphibian and Reptile Brumation



Molecules

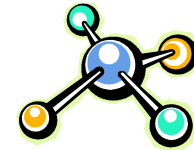
Try these easy experiments that focus on the properties of water and other liquids. Outdoor exploration included.

January 25 – Phases

February 1 – Solutions

February 8 – Surface Tension

February 22 – Density



Animal Architects

Building challenges compare your skills to animals like groundhogs, wasps, etc.

March 1 – Diggers

March 8 – Weavers

March 15 – Carpenters

March 22 – Bricklayers



Forest Communities

Follow connections through the food web with games and hands-on activities.

March 29 – Producers

April 5 – Primary Consumers

April 12 – Secondary Consumers

April 26 – Decomposers



The Secret World of Plants

Experiments and games teach you about the science of plants.

May 3 – Photosynthesis

May 10 – Pollination

May 17 – Seeds

May 24 – Fruits and Flowers



Monday Afternoon Art

Interested in attending both morning and afternoon classes? Bring a lunch and stay in Moose Hill's Nature Center for a supervised lunchtime at no extra cost.

- Register for classes by the topic or save money by registering for a series. For a full description of the topics, email scaplan@massaudubon.org.
- Please register at least one week in advance to insure that the program will run. Any class without a minimum of five students may be cancelled.
- The programs are designed for homeschooled children who can participate in the learning activities without an aide.
- If Sharon schools are canceled because of the weather then Moose Hill is closed that day.
- There is no refund or transfer of fees for non-attendance of a program or for part of a program.

These classes for ages 7 – 11; see details above

All classes held from 12:30 to 2:30 p.m.

Cost for individual classes: \$20; non-refundable/non-transferable deposit \$5

Discounted cost for 4-class themed series: \$75; non-refundable/non-transferable deposit \$20



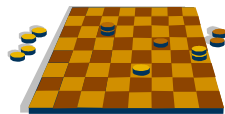
Optical Illusions

- September 21 – Visual Trickery
- October 5 – Thaumotopes and Flip Book Animation
- October 19 – Bafflers and “Magic” Tricks
- October 26 – Zoetrope: Make a Moving Image

Homemade Games

Decorate games that you can give as gifts or keep for your family to play on a wintery night.

- November 2 – Fox & Geese and Solitaire Board Games
- November 9 – “Art-zee” Dice Game
- November 16 – Ox-Yoke Puzzles
- November 23 – Number and Color Puzzles



Knitting

Register for the four-class series. Work at your level and add skills like increasing and decreasing, changing colors, or learning to purl when you're ready. Bring your own size 8 needles so you can work on your project at home.

December 7, 14, January 4, 11



Sculpture Studio

 (\$150 for the 8-class series)

Make different three-dimensional art using a variety of media.

January 25 – Chenille Stems and Wire

February 1 & 8 – Paper Mache (\$40 for the 2-part class)

February 22 – Polymer Clay

March 1 – Make a 3-D Marble Maze

March 8 – Hand Sew a Felt Pillow

March 15 – Make a Plastic Canvas Box

March 22 – Decoupage a Treasure Box



Color Workshop

Learn how and why different color combinations look more appealing than other color schemes – develop a lifelong skill that goes beyond art to getting dressed and decorating at home.

March 29 – Color Wheel Basics

April 5 – Analogous Color Schemes

April 12 – Complementary Color Schemes

April 26 – Triadic Color Schemes



Pencil and Paint

When the weather is favorable, we'll take supplies outside and allow nature to inspire our drawings and paintings.

May 3 – Watercolor Pencils

May 10 – Charcoal Pencils and Chalk Pastels

May 17 – Acrylic Paints

May 24 – Crayons and Watercolor Paints Combined

