

**Ipswich  
River  
Wildlife  
Sanctuary  
School Programs  
2008 - 2009  
PreK - Grade 12**



**Environmental Education  
Programs Supporting the  
Massachusetts Curriculum  
Frameworks**

**Including  
Our Maple  
Sugaring  
Program**

## **Welcome to the Ipswich River Wildlife Sanctuary!**

The 2,267-acre Ipswich River Wildlife Sanctuary is one of Mass Audubon's largest properties. More than 12 miles of interconnecting trails invite exploration of forests, meadows, wetlands, islands, and vernal pools. Eight miles of the Ipswich River meander through the property, creating a diverse terrain, making this an important place for many organisms year round and seasonally.



### **Educational Programs**

Over the years our staff has provided thousands of environmental education programs for pre-K, elementary, middle, and high school students on the North Shore of Massachusetts. Under the guidance of our education staff and field teachers, students investigate, explore, and marvel at the wonders of the natural world, while gaining valuable knowledge in the life and earth sciences. We offer programming at the sanctuary or at your school, as well as a Naturalist in Residency program, and teacher workshops. Our programs cultivate an appreciation for and an understanding of the environment and our interrelationships with the natural world. It is also our goal to develop thoughtful, conservation-minded citizens for the future.



### **Massachusetts Curriculum Frameworks**

We provide a wide range of programs which are specially designed to support the Massachusetts Curriculum Frameworks. See our program descriptions to select programs to help you meet specific standards. Please note that many programs can also be adapted to meet your specific criteria. For more details on how any of our programs address the Frameworks, please contact us.



# Pricing and Booking



## Programs at the Sanctuary:

|                |                              |
|----------------|------------------------------|
| 1 hour:        | \$6.50/student               |
| 1 1/2 hours:   | \$7.00/student               |
| 2 hours:       | \$7.50/student               |
| 2 1/2 hours:   | \$8.00/student               |
| 3 hours:       | \$9.00/student               |
| River Ecology: | \$23.00/student (see page 6) |

## Programs at Your School:

1 hour: \$100/class, plus mileage

## Program Development: \$50/hour

You may request that specialized programs be developed outside of our standard curriculum.

## To custom design a program or to review curriculum, please contact:

Kim LoGrasso, Youth Education Manager  
978.887.9264 x 7706 or  
Email: [klograsso@massaudubon.org](mailto:klograsso@massaudubon.org)

## To book a program, please contact:

Stina MacDougall, School Programs Administrator  
978.887.9264 x 7705 or  
Email: [smacdougall@massaudubon.org](mailto:smacdougall@massaudubon.org)

**Please complete and submit the  
Registration Form on Page 10. Thank you!**

# You Come to Us

## *Fall and Spring Programs*

### **Signs of the Season**

### **Grades Pre & K**

Explore nature's seasonal changes using the senses of sight, sound, touch, hearing, and smell. Each class observes the changes in plant and animal life along the trail throughout the changing seasons. (See our winter program listing for the Winter Walk.) 1 or 1 ½ hours

LS: Living Things & Their Environment  
ES: Energy in the Earth's System

Curriculum  
Frameworks  
LS = Life Science  
ES = Earth Science

### **Ecosystems**

### **Grades K-2**

Animals have the same needs as people: food, water, and shelter. Students will learn about local ecosystems, exploring forest, field, and wetland and learn how different animals can survive in each. 1 ½ hours

LS: Living Things & Their Environment, Characteristics of Living Things  
ES: Materials & Energy Resources

### **Seeds and Plants**

### **Grades 1 & 2**

Young students will investigate the life cycle of plants and what they need to survive. Look at seeds and how they travel, as well as how the roots, leaves, stems, and flowers work together to help the plant grow and reproduce. 1 ½ hours

LS: Living Things & Their Environment, Characteristics of Living Things  
ES: Energy in the Earth's Systems

### **Insects**

### **Grades 1 & 2**

What makes an insect an insect? Students discover the unique characteristics of insects, search the sanctuary fields for insects, and discuss insect adaptations such as camouflage, life cycles, body structure, and more. 1 ½ hours

**Note:** This program studies field insects only. Please specify if you wish to include pond insects when booking, as program will be extended to 2 hours.

LS: Living Things & Their Environment, Characteristics of Living Things  
ES: Materials & Energy Resources

### **Pond Life**

### **Grades 2 & 3**

Discover life in the magical freshwater pond ecosystem. Using simple sampling tools, we will examine aquatic invertebrates and discuss their adaptations and interactions in their wetland habitat. 2 hours

LS: Living Things & Their Environment, Characteristics of Living Things, Characteristics of Plant & Animal Structure & Function, Adaptations of Living Things  
ES: Materials & Energy Resources

# **You Come to Us**

## ***Fall and Spring Programs***

### **Trees**

### **Grades 2-4**

Through role-play, students come to understand how a tree functions and changes with the seasons. Learn about conifers and broad-leaved trees and identify some trees by leaf shape. Observe the life cycle of trees from maturity to decay while we discover which animals rely on trees for their lives. Older students will learn how to use a dichotomous key for identification. 2 hours

LS: Living Things & Their Environment, Characteristics of Living Things, Characteristics of Plant & Animal Structure & Function, Adaptations of Living Things  
ES: Materials & Energy Resources, Energy in the Earth's System

### **Local Ecosystems**

### **Grades 3-6**

While exploring local New England ecosystems including forest, field, and wetland, learn about their various components and interrelationships, their role in the health of the environment, and how fragmentation threatens biodiversity. 2 hours

LS: Characteristics of Plants & Animals, Living Things & Their Environment, Adaptations of Living Things, Changes in Ecosystems Over Time

### **The Ecology of Seeds and Plants**

### **Grades 3-5**

Investigate the life cycle from seed to plant. Look at seed dispersal, plant structure, function, and adaptations. 1 ½ hours

LS: Structure & Function, Characteristics of Plants & Animals, Adaptations of Living Things

### **Pond Communities**

### **Grades 4 & 5**

Using dip nets and other investigative equipment, explore freshwater ponds to identify and classify aquatic organisms. Observe stages of metamorphosis and discover the adaptations used to survive in this special ecosystem. 2 hours

LS: Characteristics of Living Things, Structure & Function, Adaptations of Living Things, Energy & Living Things, Classification of Organisms

### **Soil Science**

### **Grades 4 & 5**

Sample and study diverse soils and compost found in various habitats including field, forest, and wetland. Identify the components and properties of soil and learn about erosion, decomposition, absorption, and other key elements of this habitat and its inhabitants. 2 hours

LS: Energy & Living Things;  
ES: Materials & Energy Resources, Structure of the Earth

# You Come to Us

## Fall and Spring Programs

### Energy Flow

### Grades 4 & 5

Explore the sun's energy flow through producers, consumers, and decomposers. Students experiment with photosynthesis, track consumers, and investigate decomposers. 2 ½ hours

LS: Energy & Living Things

### Wetlands

### Grades 5-8

What are wetlands and why are they so important? Discover with us as you collect and observe macroinvertebrates, sample wetland soils, and create a field guide to wetland plants and animals. 3 hours

LS: Living Things & Their Environment, Changes in Ecosystems Over Time, Adaptations of Living Things

ES: Materials & Energy Resources

### River Ecology

### Grades 6-12

Come explore the Ipswich River!

When studying the history or ecology of the Ipswich River, investigating water quality, wetland species, or aquatic organisms, the use of canoes can greatly enhance the experience. Canoe the Ipswich River, exploring the animals and plants of the floodplain forests and marshes. Stop in the backwaters and sample the rich aquatic life to learn more about what lives under the water. Investigate natural and human influences and learn how to protect the river's resources. 3 ½ hours



\$345.00 per group, or \$23.00 per student for groups larger than 15 participants. Shorter programs are available at \$125.00 per hour. Fee includes canoe instruction, PFD (personal flotation device), paddle, and two Mass Audubon naturalists.

LS: Living Things & Their Environment, Changes in Ecosystems Over Time

### Nature Journaling

### All Grades

Reconnect your students to the natural world while bringing out their creative sides through interdisciplinary approaches to nature journaling. Class may take place in the classroom, in the schoolyard, or at the sanctuary.

*Year-round.*

# We Come to You

## *Programs in the Classroom*

### **Nocturnal Animals**

### **Grades K & 1**

Students are introduced to the concept of nocturnal animals through role-play, games, discussion, and a close-up look at animal specimens. Explore animal adaptations for survival, such as food and predator defense. *Year-round.*

LS: Living Things & Their Environment

### **Soils Underfoot**

### **Grades 2 & 3**

Students learn about the composition of soil, study the types of soil on the school grounds, and make a soil salad. *Early fall or spring.*

LS: Characteristics of Living Things

### **Animal Adaptations**

### **Grades 3 & 4**

Examine animal artifacts to discover how animals are adapted to the places and climates in which they live. Learn about teeth adaptations and food preferences, habitat, winter survival, camouflage, and much more. *Year-round.*

LS: Adaptations of Living Things

### **Energy Matters**

### **Grades 5 & 6**

Massachusetts producers, consumers, and decomposers will host a lesson on the flow of energy as it moves through nature in an efficient cycle. *Fall or spring.*

LS: Energy & Living Things

**Classroom programs are available year-round.**  
**All programs are one hour.**

### **Tide Pool Exploration**

### **All Grades**

Explore the rocky shore and tide pools at a beach in Marblehead or an appropriate beach near you. Programs are scheduled according to the tide chart. *Fall or Spring.*



LS: Living Things & Their Environment, Adaptations of Living Things



# Winter Programs

## At the Sanctuary



### **Sugaring-Off Tours**

### **Grades PreK-8**

The School Sugaring-Off program is designed to allow students a firsthand experience in the delicious tradition of maple sugaring. We begin with a lively indoor introduction to the basic concepts of maple sugaring, including which trees are used and why, how sap flows, and the maple syrup-making process itself. Next, our Field Teachers lead outdoor walks to observe trees and wildlife in late winter, and to see and taste sap as it's being collected. We end the tour with a visit to our sugarhouse to see just how sap is changed to maple syrup, and of course, for a sweet sample of our fresh syrup!

*All programs are \$6.50 per person.*

Snow days will be Tuesday and Wednesday, March 17 and 18.

#### **Grades 1-8**

**Tuesday through Friday:**

February 24 through March 13

*Times:* 9:30-10:30 a.m. *OR* 11:00 a.m.-noon

*Limit:* 75 per tour; split into smaller teaching groups



#### **Preschool (ages 4 and older) and Kindergarten**

**Tuesday through Friday:**

February 24 through March 13

*Times:* 9:00-10:00 a.m. *OR* 10:30-11:30 a.m. Tuesday through Friday; also 1:00-2:00 p.m. Tuesday and Wednesday

### **Winter Walk**

### **Grades PreK-6**

Increase sensory awareness and ecological understanding of the world in winter in this discovery program. Discuss animal and plant adaptations and survival strategies in the cold weather. 1 or 1 ½ hours

LS: Living Things & Their Environment, Structure & Function, Adaptations of Living Things

### **Winter Tracking**

### **Grades 2-6**

Learn how body shape, leg length, and foot type determine an animal's track pattern. Make connections to unseen animals by learning and following tracks, looking for other evidence of activity, and practicing your silent stalking. 2 hours

LS: Living & Their Environment, Characteristics of Living Things, Adaptations of Living Things

# Naturalist in Residency Program

Could your school benefit from a continued relationship with a skilled naturalist from Ipswich River Wildlife Sanctuary? We offer a unique opportunity for your school and your students. This program is designed to help schools develop a connection to the natural world outside on their school grounds and within the classroom.

- *Enrich your life science curriculum*
- *Explore with hands-on, Framework-based activities*
- *Participate in teacher workshops*
- *Have direct contact with a sanctuary naturalist for all your natural history questions*

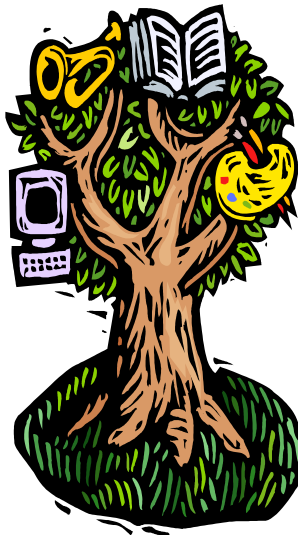
For more information about the Naturalist in Residency program, contact:

Kim LoGrasso, Youth Education Manager  
978-887-9264 ext. 7706  
klograsso@massaudubon.org

## Other Programs

### Teacher Workshops

We offer a full range of teacher workshops suited to your school's needs. Our programs incorporate life science concepts from the Curriculum Frameworks and activities to use outdoors with your students. Each program includes a certificate for attendance hours to use toward PDPs.



### Homeschool Programs

Our elementary homeschool program introduces students to basic ecology while nurturing an appreciation of the natural world. Students will become familiar with the plants and animals of our area through hands-on discoveries. Middle school programs also available.

# Registration Information

*Registrations are processed on a first-come, first-served basis, and must be accompanied by a \$50.00 deposit unless prior arrangements have been made with the School Programs Administrator.* A pre-visit information packet including a confirmation letter and directions to the sanctuary will be sent upon receipt of the deposit. The balance of the program fee is due upon arrival. Please list a second and third choice when registering. If all choices are full, you will be contacted and placed on a waiting list.

*Programs will be canceled if school is canceled in Topsfield or your school's town.*

*Refund Policy:* To receive a refund of the balance paid, you must notify us of your withdrawal at least two weeks prior to the program. A full refund will be issued only if a program is canceled and we are unable to reschedule you. No rebates will be given for incomplete attendance for programs.

## Registration Form

*Please duplicate and submit a separate registration form for each program.*

School Name: \_\_\_\_\_

Teacher Name: \_\_\_\_\_ Grade Level: \_\_\_\_\_

Street Address: \_\_\_\_\_

Town: \_\_\_\_\_ State : \_\_\_\_\_ Zip: \_\_\_\_\_

E-mail: \_\_\_\_\_

Work Phone: \_\_\_\_\_

Cell Phone: \_\_\_\_\_

Home Phone: \_\_\_\_\_

PROGRAM NAME: \_\_\_\_\_ PROGRAM FEE: \_\_\_\_\_

1st Choice: Day/Date: \_\_\_\_\_ Time: \_\_\_\_\_

2nd Choice: Day/Date: \_\_\_\_\_ Time: \_\_\_\_\_

3rd Choice: Day/Date: \_\_\_\_\_ Time: \_\_\_\_\_

# of Students: \_\_\_\_\_ # of Teachers/Adults: \_\_\_\_\_ = Total #: \_\_\_\_\_ Total Fee: \$ \_\_\_\_\_

Master Card, Visa or Discover : \_\_\_\_\_ Exp Date: \_\_\_\_\_

Name on Credit Card: \_\_\_\_\_

Make checks payable to: Mass Audubon

Send to: Ipswich River Wildlife Sanctuary, 87 Perkins Row, Topsfield, MA 01983

or FAX with Credit Card Payment to 978-887-0875.

Questions? Please contact our Main Office at 978-887-9264.

Mass Audubon works to protect the nature of Massachusetts for people and wildlife. Together with more than 100,000 members, we care for 33,000 acres of conservation land, provide educational programs for 200,000 children and adults annually, and advocate for sound environmental policies at local, state, and federal levels. Mass Audubon's mission and actions have expanded since our beginning in 1896 when our founders set out to stop the slaughter of birds for use on women's fashions. Today we are the largest conservation organization in New England. Our statewide network of 45 wildlife sanctuaries welcomes visitors of all ages and serves as the base for our conservation, education, and advocacy work. To support these important efforts, call 800-AUDUBON (283-8266) or visit [www.massaudubon.org](http://www.massaudubon.org).

## **Come Visit the Ipswich River Wildlife Sanctuary in Topsfield**

### **DIRECTIONS:**

From the south: Take Rt. 1-95 north to exit 50 and follow Rt. 1 north. At the junction of Rt. 1 and Rt. 97, turn right onto Rt. 97 south (toward Beverly and Danvers). Follow Rt. 97 south and take the third left onto Perkins Row. Follow Perkins Row for 1 mile, and the sanctuary is on the right.

From the north: Take Rt. I-95 south to exit 53A and follow Rt. 97 south. At the junction of Rt. 1 and Rt. 97 in Topsfield, stay on Rt. 97 south and take the third left onto Perkins Row. Follow Perkins Row for 1 mile, and the sanctuary is on the right.

PHONE: 978.887.9264 FAX: 978.887.0875  
87 Perkins Row  
Topsfield, MA 01983  
[www.massaudubon.org/ipswichriver](http://www.massaudubon.org/ipswichriver)

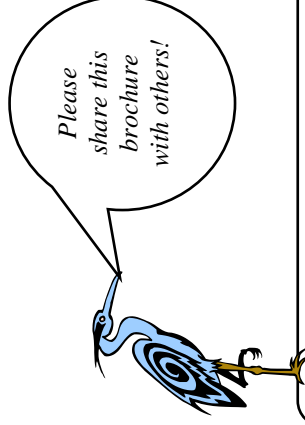
This school brochure is available on line. Just click on School & Group Programs on the Ipswich River Sanctuary page for the PDF file.

Stay up-to-date on upcoming programs and events at the sanctuary through our e-newsletter, *Ipswich River Meanderings*. To subscribe, send an email to: [ipswichriver@massaudubon.org](mailto:ipswichriver@massaudubon.org).



Ipswich River Wildlife Sanctuary  
87 Perkins Row, Topsfield, MA 01983

Nonprofit Org.  
U.S. Postage Paid  
Wenham, MA  
Permit No. 58



### Why Choose Ipswich River Wildlife Sanctuary?

- Massachusetts Frameworks Based Curriculum
- On-site life science programs
- In-class and school ground programs
- Teacher Workshops
- Homeschool Programs
- Knowledgeable and experienced program leaders

