

To Schedule Your Group

We recommend scheduling a program at least one month in advance. If we are going to custom design a program, more time may be needed. Inquire about Fall and Winter Programs in August and September; inquire about Spring programs November through February.

Contact the Education Coordinator at Broadmoor by calling (508) 655-2296, extension 7304, or by emailing broadmoorschool@massaudubon.org.

Please provide the following information:

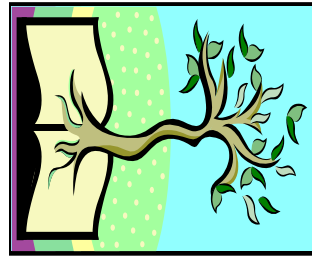
- Grade level
- Program you are interested in arranging
- Objectives you want to achieve
- Number of classes, students/class
- Preferred dates and times
- Your name, School name and location
- Contact information / best times to reach you

Professional Development

We offer teacher professional development and are willing to come to your school for specific program content. Please inquire.

ALLIES

Please inquire about our comprehensive school program, Achieving Long-term Literacy in Environmental Sciences.



SCHOOL PROGRAMS
Broadmoor Wildlife Sanctuary
280 Eliot Street / Rte. 16
Natick, MA 01760



Broadmoor Wildlife Sanctuary School Programs

science learning in nature



Our school programs guide inquiry into nature through “hands-on / minds-on” experiences with the natural world. They are designed to develop students’

curiosity about nature into appreciation for their local environment.

We incorporate learning standards from the Massachusetts Curriculum Science and Technology Frameworks into our program curriculum. With advance notice, we may be able to customize our programs at your request.

Field Trips at Broadmoor*

2009-2010

Seasons F= Fall; W= Winter; S= Spring

Program	Grades	Length	Season	Concepts	Fee / student
Sense of Nature	Pre-K—1	1.5 hrs	F—W—S	Patterns in Nature, cycles, living/non-living, senses	\$6.00
Habitat Explorations	K—3	2 hrs	F—W—S	Habitats, food chains	\$7.00
Marsh Life	K—3	2 hrs	F—S	Habitat, water cycle, food chain	\$7.00
Life in a Vernal Pool	K—5	2 hrs	F—S	Habitat, water cycle, life cycle, food chain	\$7.00
Winter Survival	2—5	2 hrs	F—W	Adaptations to seasons, tracks and signs, habitat	\$7.00
Broadmoor Cultural & Natural History	2—4	2 hrs	F—S	Early Natick residents, water use, ethnobotany, early technology	\$7.00
Along the Charles	4—6	3 hrs	F—S	Water cycle, habitat, local cultural history, hike to the Charles River	\$8.50
Field, Forest and Marsh	4—6	2 hrs	F—S	Data collection, a-biotic /biotic, community, adaptation	\$7.00
Marsh Ecology	4—6	2 hrs	F—S	Adaptations, habitat, classification, wetland function	\$7.00
Landforms	4—7	2 hrs	F—S	Erosion, weathering, glacial impacts, rock formation	\$7.00
Adaptations	4—7	2 hrs	F—S	Adaptations, habitat, relationships in nature	\$7.00
Green Building / Solar	6+	2 hrs	F—W—S	Solar energy, water conservation, compost, design	\$7.00
Ecology	6+	2 hrs	F—S	Energy flow, adaptations, relationships in Nature	\$7.00

Programs at your School or elsewhere

Fees

Classroom Lesson	Pre-K—7	1 hr	F—W—S	Any science topic- we'll work with your curriculum	\$47-95/hr
Schoolyard Lesson	Pre-K—5	1.5 hrs	F—W—S	Any science topic- taught in natural areas near your school; 10/class	\$50/hr
River Ecology**	6—12	2-3 hrs	F—S	Canoeing, ecology, energy flow, geology, watersheds; limit 14/trip	\$125/hr

*Programs may be combined or adjusted. Groups may arrange to have lunch or snack on site in designated areas; we have a pack-it-in/pack-it-out policy. We run programs rain or shine. Longer programs may be arranged for \$1/student per each additional 1/2 hr. **Water-level dependent.