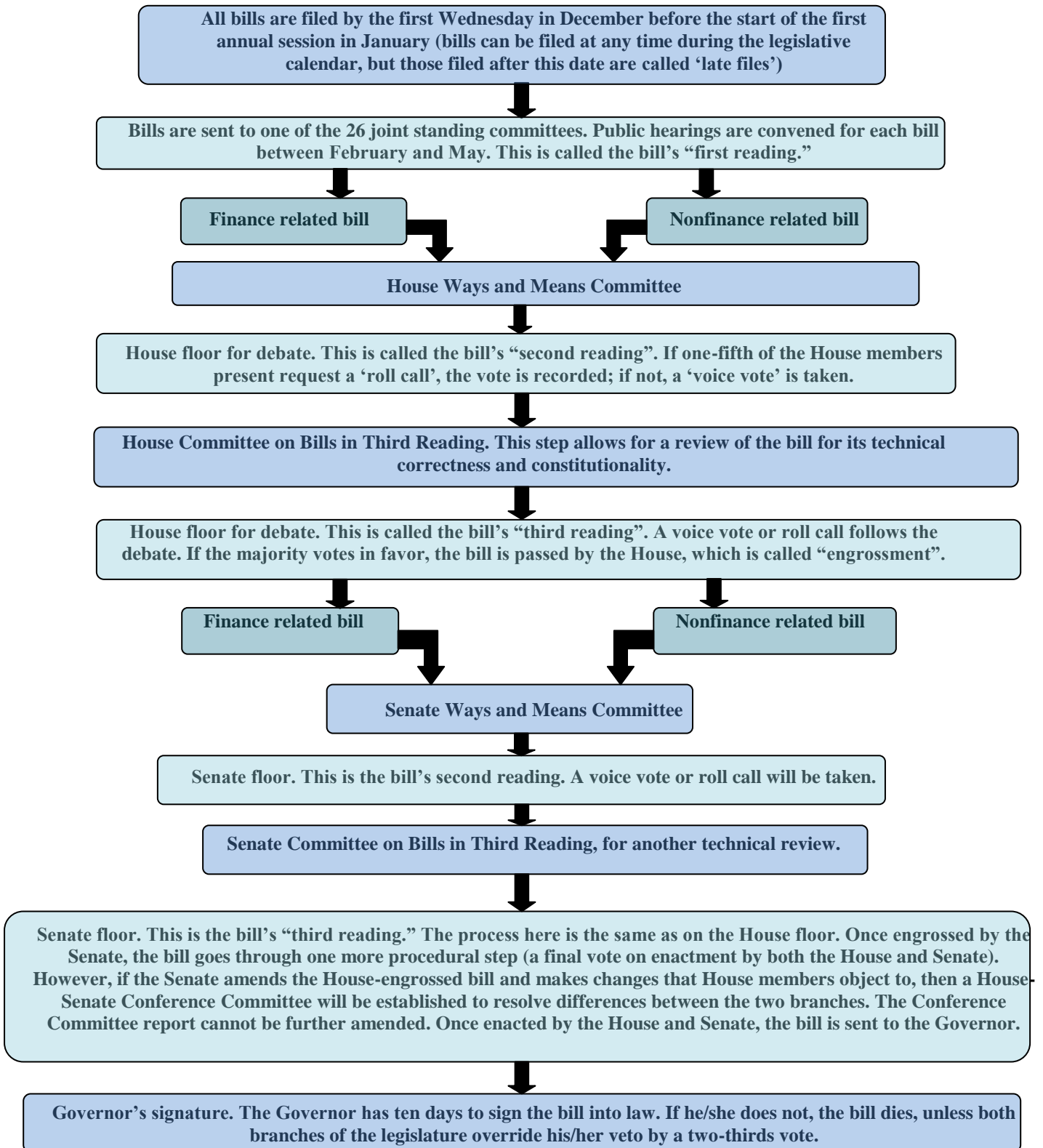


MASSACHUSETTS LEGISLATIVE PROCESS



A Bill may begin in either the House or the Senate. The Legislature is on a two year session. Bills that are not passed by the end of the first year "carry over," meaning that they are at the same step at the beginning of the second year. Finance bills do not carry over.



Mass Audubon

Legislative Affairs

Six Beacon Street, Suite 1025 ▲ Boston, Massachusetts 02108
tel 617.523.8448 ▲ fax 617.523.4183 ▲ email beaconhill@massaudubon.org