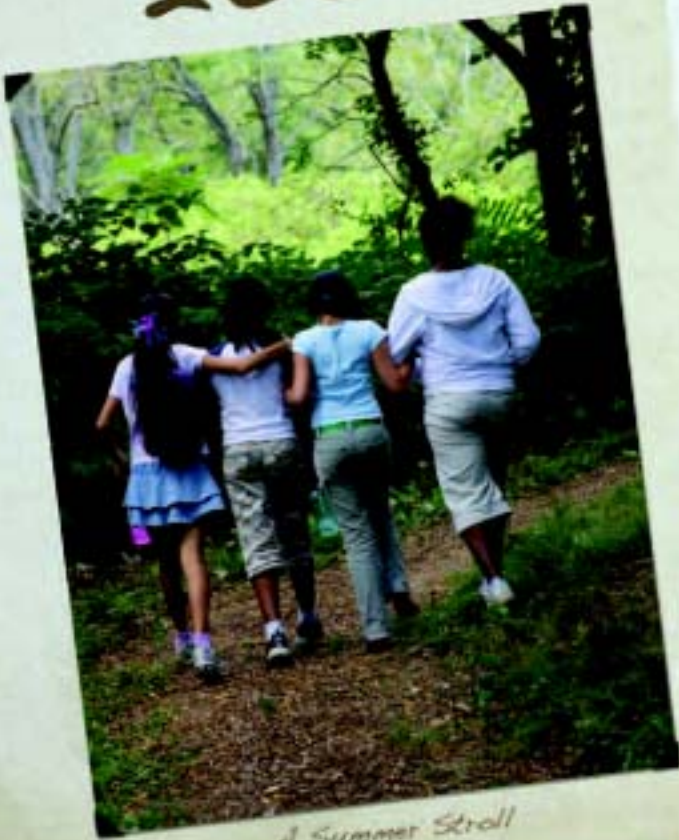


# Stories of 2006



*A Summer Stroll*



*Morning Hike*



*Day Camp Buddies*



*Piping Plover Chick*



*Cape Cod Sunset*



*North Shore Birding*

“ We embrace a vision of Massachusetts in which people appreciate and understand native plants and animals and their habitats and work together to ensure that they are truly protected. ”



*Taking Time to Explore*

© Mass Audubon 2006  
Mass Audubon  
208 South Great Road  
Lincoln, MA 01773  
781-259-9500  
www.massaudubon.org

Editor: Susannah C. Lund  
Printed on recycled paper with soy-based ink.



massculturalcouncil.org

## Dear Members and Friends,

The power of stories is something we learn at a very young age. Stories help us learn new things, relate to and become engaged in our communities, pass on information from generation to generation, and gain a deeper appreciation for the world around us.

For Mass Audubon, stories bring our achievements to life and inspire us to overcome environmental challenges. They add dimension to the facts and figures of conservation, such as the number of acres protected, 32,000; the number of Mass Audubon members, 100,000; and the number of annual visitors to our wildlife sanctuaries, 500,000.

It is our pleasure to share with you a collection of stories about our many accomplishments throughout the year and the people who helped make them happen.

One of our biggest successes this year is the renovation and expansion of our nature center at Wellfleet Bay Wildlife Sanctuary. From flooring made of recycled tires to photovoltaics to rainwater recovery systems, the building takes green design to the highest level. On page 7, you'll find a message from a longtime friend—one of the many hundreds of people from volunteers to donors who helped make this vision a reality.

Land continues to be developed at the alarming rate of 40 acres a day in Massachusetts, making our land protection efforts more urgent than ever. Working in partnership with individuals, organizations, municipalities, and agencies, we were able to protect \$8 worth of land for every \$1 Mass Audubon spent. We accomplished this by using the full “tool box” of conservation techniques. Inside on pages 2, 3, and 5, you can read more about individuals and communities and their deep personal commitment to saving land.

Today, more than ever, we understand the connection between the food we eat and our own health and that of the environment. That is why Mass Audubon is proud to offer Community Supported Agriculture (CSA) programs at Moose Hill and Drumlin Farm wildlife sanctuaries. This year, nearly 500 families participated,

receiving fresh locally grown vegetables throughout the season. In addition, Drumlin Farm food is distributed through many area farmers' markets and ReVision House, a shelter for homeless young women and their children located in Dorchester. People of all ages learned more about the relationship between farming and our environment by visiting Drumlin Farm to see our working farm, including the newly renovated poultry house (page 4).

There are many other stories inside this annual report, and still more to be found in our publications throughout the year, at any one of our 43 wildlife sanctuaries across the state, and online at [www.massaudubon.org](http://www.massaudubon.org).

While we take a look at the progress we have made, we hope you continue to be inspired by your own connections to the natural world. We all know there is more work to be done to help protect the nature of Massachusetts.

Thank you for your continued involvement and support. We cannot write the next chapter without you.

Laura A. Johnson, *President*

Franz Colloredo-Mansfeld, *Chair*



*Franz Colloredo-Mansfeld and Laura A. Johnson*

## Heartfelt Thanks to Franz Colloredo-Mansfeld

Each year, we are faced with transitions. Some are welcome, like the end of a cold winter and the return of birds in the spring; while others come as an inevitable shock, like the back-to-school rush in the fall. At the end of 2006, Mass Audubon

faces the inevitable as Franz Colloredo-Mansfeld completes six years as Mass Audubon's Chairman of the Board. It is impossible to put into words all that has been accomplished under his strong leadership. Franz's genuine commitment to conservation and his inspired vision have helped Mass Audubon grow and strengthen during changing economic times.

Franz first became involved with Mass Audubon as a sanctuary committee volunteer in 1993, although his connection to the organization began much earlier when he was a young boy living in the North

Shore community of Hamilton. He grew up just down the river from our Ipswich River Wildlife Sanctuary in Topsfield. Franz recalls, "I would walk from my house, through the woods, cross a rickety bridge, and end up in a very remote part of the sanctuary where I would spend hours exploring. These are

lasting memories that I am fortunate to carry with me today."

Credit goes to Franz's mother, Susanna Colloredo-Mansfeld, a grassroots environmentalist, who gave the gentle nudge that led him to reconnect with Mass Audubon as an adult. When Ipswich River Wildlife Sanctuary was recruiting new sanctuary committee volunteers, Franz's mother recommended that he get involved. At that

time, Mass Audubon was busy preparing for a capital campaign to celebrate the 100th anniversary of the organization's founding. Franz's business background and love for the environment made him a perfect fit, and he joined the Board as an associate director in 1994 and full Board member two years later.

There have been many accomplishments during Franz's tenure. Mass Audubon has expanded its presence in underserved communities with projects such as the Boston Nature Center in Mattapan and Broad Meadow Brook in Worcester. Land preservation efforts have grown, and we now protect more than 32,000 acres of land in Massachusetts. In addition, science and advocacy work have put Mass Audubon in the forefront of important environmental debates, including the proposed wind farm in Nantucket Sound.

"Franz has been essential to Mass Audubon's success during his tenure as chair," says Mass Audubon President Laura Johnson. "He has brought many new people closer to the organization, provided strong leadership in fundraising, and shared a seasoned and practical approach to developing the capacity to help achieve our mission."

Today, Franz, his wife Anne, and 4 children continue to live on the property where four generations of his family have enjoyed Massachusetts' splendid North Shore. Although his term as Chairman of the Board has come to an end, he promises to stay involved. For that reason, and so many more, we thank you, Franz! •

Update on...

THE CAMPAIGN TO SAVE O'NEIL HILL

[www.massaudubon.org/onehill](http://www.massaudubon.org/onehill)

\$200,000 Raised • 26 Acres Saved

Mass Audubon and Williamsburg residents banded together to purchase O'Neil Hill in Williamsburg—a key property that serves to link two sections of our Graves Farm Wildlife Sanctuary. The fundraising effort was a true community endeavor, as donors with contributions large and small pitched in to help. Support ranged from elementary students attending the Smith College Campus School, who embarked on a read-a-thon and sold homemade dog biscuits, to major donors and foundations from across the state. A \$35,000 Conservation Partnership Grant from the state's Executive Office of Environmental Affairs helped secure necessary funding. •



Old Field Oak

## Making a Difference in Mattapan

“I feel like we’re doing something good for the community and for the kids who come here,” says Mary Jaber, 16. “There aren’t many areas like this left in the city. A lot of people don’t have a clue that this beautiful green place exists.” But thanks to Mary and five other teenagers at Mass Audubon’s Boston Nature Center (BNC), the word is spreading.

These young people—known as Teen Ambassadors—are taking part in the Mellon CityACCESS program\*, which gives Boston youth the opportunity for year-round apprenticeships at eight nonprofits across the city. This year, BNC welcomed a second class of ambassadors, who will work at the sanctuary for three years.

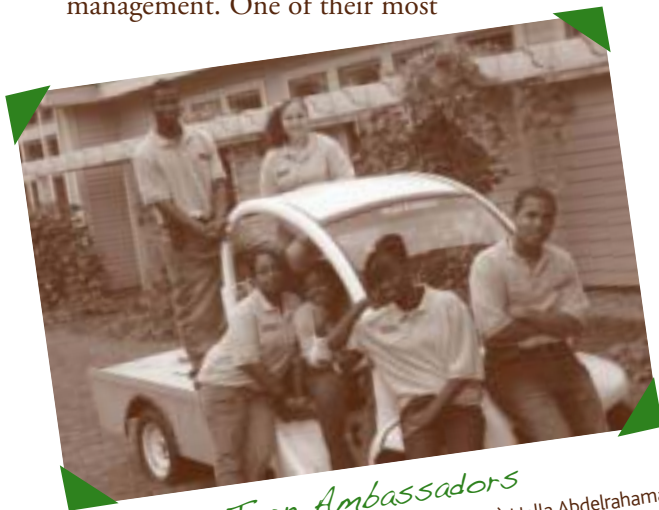
The teens are involved in almost every aspect of the site—from public relations to sanctuary management. One of their most

important roles is to mentor younger kids in the summer camp and after-school programs, which are the heart and soul of BNC, providing urban kids with opportunities to explore the natural world and connect to the environment in a way that is brand new for many of them. “They are wonderful role models,” says Gloria Villegas-Cardoza, education manager. “It’s an incredible opportunity for younger children to see the ambassadors in such a positive way.”

While the teens perform a valuable service to the sanctuary, their communities, and the kids they mentor, the program in turn helps them develop important life skills. “They bring energy, enthusiasm, and the desire to do a good job,” explains Julie Brandlen, sanctuary director. “This internship helps them build an array of skills, learn professional behavior, and have the chance to try and succeed at something new.” From this, the teens gain a strong sense of pride and responsibility. As Brandon Emiliano observes, “I feel more mature, and I’ve learned that I like to lead.”

When they leave the sanctuary each day, the Teen Ambassadors carry into their communities a new appreciation of the natural world and the mechanisms in place to take action for change. “Sometimes we take the world for granted,” explains Monique Brunner. “But it takes just one person at a time to realize what we have to do,” adds Halla Abdelrahman. Fortunately, we have six extraordinary teens who are already leading the way. •

\* Mellon CityACCESS was established in 1994 by the Mellon Charitable Giving Program through the generosity of the Arthur F. Blanchard Trust.



*Teen Ambassadors*

Marquis Henderson and Mary Jaber (standing l to r) Halla Abdelrahman, Tatiana Johnson, Monique Brunner, and Brandon Emiliano (sitting l to r)

A 90-acre property in Middleborough known as Wolf Trap Hill Farm is now permanently protected thanks to the generosity and conservation ethic of owner Kathleen (Betty) Anderson, who sold a conservation restriction at a significant discount to make sure that the land would remain undeveloped.

“Paul and I loved the old farm from the first time we came up the long drive in October 1950. Through the years, as we learned to know and appreciate it more, we recorded both the human history and the wealth of wildlife that shared the land with us—birds and mammals, reptiles and amphibians, butterflies and dragonflies, and the plants that nourished us all.

Since Paul’s death, I have been besieged by developers offering free appraisals and instant cash, and I have worried about the future of the farm if it must pass out of the family. The thought of this land that we have loved and preserved for more than a half-century covered with houses, roads, and streetlights was a recurring nightmare.

Working with Mass Audubon and The Wildlands Trust of Southeastern Massachusetts, we found a way to ensure that, whatever the future ownership of Wolf Trap Hill Farm, the land can never be subdivided and developed. It is a tremendous relief.

I am so grateful to all whose generosity has contributed to this way of preserving a piece of wildland in the midst of rapid development in southeastern Massachusetts.” •

*Kathleen Anderson, Middleborough*



*Kathleen Anderson*

*In Your Own Words*

We heard from many of you when news of our position on the proposed wind farm in Nantucket Sound became public this year. After five years of project review and three years of ornithological field research, we shared with project partners and the public our assessment of the environmental impact of the project, concerns about project data gaps, and recommendations on the next steps. Our involvement in the review of the project continues today, and thanks to the feedback of many members, including this one, we know we are on the right track.

“As an almost 40-year member, I would like to applaud Mass Audubon’s recent public statement on Cape Wind. Whether correct or not, the decision was an informed and principled one.

It leads me to believe that Mass Audubon—unlike others of your institutional colleagues nationally, who have become either increasingly partisan and shrill or choose to remain uncommitted on the sidelines—is prepared not just to stick up for the environment but to play a meaningful role as a responsive and effective partner in decisions affecting the entire economic and social well-being of the Commonwealth.

In years past, when issues were more sharply in focus, being an environmentalist was a good deal easier than in these uncertain and controversial times. Nevertheless, I hope that Mass Audubon will never refrain from trying to be right for fear of doing something wrong.” •

*Charles H. W. Foster, Needham*



## Fresh Faces in Drumlin Farm’s Poultry House

Austin Brown is definitely for the birds, or more specifically for the fowl. Austin and his family have been visiting Drumlin Farm for years, and he has a special fondness for the chickens. So when he heard that the poultry house was going to be rebuilt, instead of accepting presents for his seventh birthday Austin asked his family and friends to donate money toward the project.

“I think Drumlin Farm is a really nice place,” says Austin. “I especially like the chickens and thought, ‘Why not fix up the chicken house?’” Austin’s mother knows that his choice to make this gift to Drumlin Farm will outlast the excitement of any toy. “He has a lasting relationship with a very special place, which is of course priceless,” says Margie Coffin Brown.

Austin raised over \$200 in gifts—the first money that Mass Audubon received for the project. Shortly afterward, a major, anonymous donation from a local family whose members are also chicken lovers followed, ultimately funding the majority of the renovations.

Thanks to these donors, Drumlin Farm’s poultry house has been reconstructed both inside and out, and the end result

provides visitors with an enhanced experience and new exhibits. “The new building makes the chickens more accessible, and visitors are able to explore and learn more,” says Tia Pinney, a program coordinator for Drumlin Farm.

While the poultry house will still feature a variety of egg-laying chickens, the new facilities provide more space to highlight fancy, heritage, and rare breeds of chickens as well, such as tophats and silver laced wyandottes. Interactive exhibits are in the works, including a soundboard where visitors can hear the noises made by different chickens from all over the world.

The poultry house is one of several key projects in the \$3.2 million Capital Campaign for Drumlin Farm that will enhance opportunities for discovery and enjoyment for our visitors. To date over \$2.3 million has been raised.

It is the stories of these two families, plus many, many more, that have helped make this campaign a success so far. And what everyone involved has in common is a deep connection to a special place—Drumlin Farm. •



*Austin Brown*

## Piece by Piece: Broad Hill Farm



Jim & Patricia Poitras

The parcels of undeveloped land fit together like a jigsaw puzzle—stretching from downtown Holliston, around the home of Jim and Patricia Poitras, and across to Mass Audubon's Waseeka Wildlife Sanctuary. Four decades of actively protecting land in the town of Holliston by the Poitras' has culminated

this year with a long-term agreement with Mass Audubon, which makes certain that nearly 250 acres of woodlands, streams, and fields will be protected forever. This land, some of which has been in Jim's family for 60 years, will ultimately be conveyed to Mass Audubon, creating the Broad Hill Farm and Waseeka Wildlife Sanctuary.

The Poitras' motivation is both practical and inspired. According to Jim, "Creating a natural corridor for people and wildlife from downtown Holliston to Waseeka Wildlife Sanctuary is something I have wanted to do for years." He unassumingly describes his efforts as "a long-term vision—one that we chipped away at over time as we picked up a piece here and a piece there." The importance of their effort is accentuated by the development that they have seen around them. Holliston was once considered far from Boston, but its location just south of the Mass Pike and east of Route 495 has contributed to growing population and increased

housing density over the years. Without the Poitras' foresight, their land would have been developed too.

Now, with the puzzle pieces in place, Pat recalls the road that led her to Mass Audubon. Her mother-in-law was a birder and first introduced Pat to the joys of birding many years ago. Pat's passion for birding has grown, and she looks forward to her favorite time of year when the warblers return to the property each spring. Jim and Pat also became active as stewards for Mass Audubon's nearby Waseeka Wildlife Sanctuary. More recently, it was traveling with Mass Audubon's tours—to places such as Costa Rica, Cuba, and Morocco—that led Jim and Pat to entrust Mass Audubon with their property.

"Over time, we grew to know enough about the organization, people, and history that we knew that Mass Audubon would be a good steward of our land," says Pat. "We have found that Mass Audubon can work cooperatively with donors and be as creative as we need to be." Such creativity includes the timing of the land gift, agreement on future uses of the property, and plans for the New England Forestry Foundation to hold a conservation restriction on the property once Mass Audubon assumes ownership.

Part of their agreement also includes a generous endowment for the property to ensure that the land is cared for and enjoyed. Today, the property is protected from development, which gives time to make long-term plans.

"We want the property to be appreciated and well used," says Jim, "but Pat and I are not experts at managing open space; we are experts at getting it." Pat adds, "I do have a dream of someday having bobolinks in the fields—the rest is up to Mass Audubon." And thanks to the Poitras', the pieces have come together. •

Update on...  
THE ORIOLE PROJECT  
[www.massaudubon.org/oriole](http://www.massaudubon.org/oriole)

2,864 Orioles • 253 Massachusetts Cities and Towns

For the third year, citizen scientists from across the state participated in Mass Audubon's Oriole Project by telling us about Baltimore oriole sightings in their neighborhoods. While orioles are still relatively common here, scientists have detected local population declines and have proposed that the species be monitored. Our goal is to enlist as many people as possible to contribute their observations, which will help track the health of oriole populations over time.



Baltimore Oriole

The data we collect now will form the foundation for conservation efforts to ensure that this magnificent bird will be a permanent part of our landscape. •

## Stories from the Edge

Year after year, summer draws thousands to the Massachusetts coastline. From the North Shore to the Cape, people seek rest and recreation at those beautiful edges where land meets sea. Thousands of coastal waterbirds are drawn here as well,

but for a different reason. Species including the federally threatened piping plover and the federally endangered roseate tern rely on these coastal ecosystems for breeding habitat.

For them, summer also brings a struggle for survival. As more and more beach space is lost to development, the places for them to nest are fewer and farther between.

This loss of habitat—plus the impact of off-road-vehicle use, the increased presence of predators, and the intensity of coastal storms—caused coastal waterbird populations to reach dangerously low levels in the 1980s. But thanks to Mass Audubon's Coastal Waterbird Program, the story was not over.

Every April, as migratory birds return from their winter stay in points south, the staff, interns, and volunteers who make up the Coastal Waterbird Program (CWP) gear up for a season of hands-on activity. For the next six months, they visit 75 to 90 locations daily. "We'd walk the beaches, erect fencing, collect data, monitor nests, and watch the chicks hatch and eventually fledge," recounts Kaylan Kemink, a CWP staff member. "Each day held interesting discoveries."

The results of the program are quantifiable. Over its twenty-year history, the population of piping plovers has swelled from 126 pairs in 1987 to about 480 pairs\* last summer.



Roseate Tern

"This has been the program's biggest success," says Rebecca Harris, the new director of the CWP. "As a result, Massachusetts has become the model for these types of recovery efforts." Not

only does the CWP protect

numerous species that might otherwise be lost, but it also enables data collection, which can tell us a lot about the health of our beaches. "This also concerns the water we swim in and the food we eat," Harris explains. "Gathering this information can help us identify sources of bacteria, determine the health of our fisheries, and learn more about the entire ecosystem." Looking to the future, this is one area upon which Harris hopes to focus additional efforts.

Another area is education. Thanks to the CWP's presence on the beaches, the public is becoming more informed about Mass Audubon's conservation efforts. "People are learning why we're out here. They'll even call to let us know about the location of a nest," explains Ellen Jedrey, assistant director of the CWP. "There is much more we hope to accomplish in terms of public outreach—it's important to teach the next generation about the value of our unique barrier beaches," adds Jedrey, "that's how we can preserve them." As the Coastal Waterbird Program looks to the coming 20 years, that's the *next* chapter. •

Update on...  
OUR BUTTERFLY ATLAS  
[www.massaudubon.org/butterflyatlas](http://www.massaudubon.org/butterflyatlas)

154 Volunteers • 7,369 Butterfly Sightings

One hundred and three species of butterflies occur regularly in Massachusetts. Thanks to Mass Audubon's new online Butterfly Atlas, you can get a good look at all of them and learn to distinguish a skipper from a swallowtail. This new addition to the Mass Audubon website is intended to be a gateway through which you can enter and explore the world of Massachusetts butterflies. Research conducted by hundreds of volunteers has come together in an interactive format, which includes full species accounts, distribution maps, conservation status, and color images. •



Great Spangled Fritillary

\*preliminary data provided by Massachusetts Natural Heritage & Endangered Species Program

## Getting a Head Start *with Nature*

“There’s another blue mark!” was a familiar sound coming from a group of bundled-up youngsters while on a winter nature walk at Oak Knoll Wildlife Sanctuary in Attleboro. Earlier that day, the children had learned that following blue and yellow marks on trees would keep them on the right trail.

The group comes from the Citizens for Citizens Head Start Program\* in Fall River and Rehoboth. Each month during the school year, these children age three to five, teachers, and parents travel to Oak Knoll to take part in nature explorations for preschoolers.

Their adventures started indoors with activities, questions, and answers about what wildlife is, what might be seen out on the trails, and how to find their way. When it was time for the group to venture outside, a few anxious youngsters asked, “Are there any bears out here?” A scavenger hunt kept them busy, and spotting a hawk flying above or a salamander under a big log was an amazing discovery.

“The children were definitely excited, and it exposed us to things we don’t normally get

\* This program was made possible by a community grant from the Jostens Foundation, which supports organizations that enhance the lives of youth and promotes educational opportunities that significantly and positively impact children.

a chance to see,” says Rachel Martin, education specialist with Citizens for Citizens Head Start Program. For most of these children and teachers too, this was the first time they had ever been in the woods or seen wildlife up close. “When you live in the city, you are not always exposed to this type of environment so it’s nice to know that there are places like Oak Knoll where you can go,” says Martin. “It brings a sense of awareness about the environment.”

By the end of the program, Sarah Slack, director of Oak Knoll, noticed that the young students were taking ownership of the trails and feeling a sense of familiarity with their surroundings. “They recognized when a certain tree had fallen down since their last nature walk and wanted to go back and visit the

site where they had previously seen wildlife. They were letting go of their nervousness and finally feeling comfortable in the woods,” says Slack.

And although the school year for this particular class has ended, the opportunity to interact with nature is something they will remember for years to come. •



*Discovering Oak Knoll*

Wellfleet Bay Wildlife Sanctuary is a different place today than it was nearly a half-century ago. The photovoltaic panels, rainwater recovery systems, and green alternatives featured in our newly renovated nature center are considered the most environmentally friendly technology available today. With this letter from a longtime supporter and friend of Mass Audubon, we are reminded that, while much has changed in the conservation world, our success today is a direct result of the vision and foresight of those who have worked for decades before us.

“On Columbus Day of 1958, I sat on a Wellfleet Bay beach with binoculars and a sandwich and listened as my husband, Wallace, was invited to take charge of Mass Audubon’s newest sanctuary. I could not have guessed that the acreage I had just walked would become the fabric of my life for close to 50 years and counting.

Having spent 23 years as resident staff and currently 5 as a volunteer, I fully and thankfully appreciate Mass Audubon for:

- preserving natural areas for their intrinsic value and ability to engage public support for conservation,
- providing forward-looking, forward-leading public programs,
- attracting a quality cadre of members and staff I am proud to call friends.

I honor Mass Audubon’s leadership in meeting twenty-first-century pressures on the natural world. Being part of this effort keeps me in touch with the best part of my life.” •

*Priscilla Bailey*

*Priscilla Bailey, Wellfleet, Massachusetts*

*In Your Own Words*





# Land Protection Summary—Fiscal Year 2006

Mass Audubon permanently protects more than 32,000 acres of land across the state, safeguarding a wide range of habitats and native species while providing important outdoor classrooms for our education programs. This year, with the support of generous individuals, families, businesses, foundations, government agencies, and communities, we added 419 acres to our wildlife sanctuary system. A special thanks to key partner organizations and municipalities, which are listed here in **bold**.

Purchases of Land	Acres	Municipality	Wildlife Sanctuary
<b>Michael and Charlene Morrissey</b> Bargain purchase of key parcel near sanctuary entrance and trail, and threatened by intrusive development.	2.0	<b>Natick</b>	<b>Broadmoor</b>
<b>Shelter Island Fund</b> Cooperative partnership with nonprofit developer that resulted in a new neighborhood access point to urban sanctuary.	4.0	<b>Worcester</b>	<b>Broad Meadow Brook</b>
<b>31 Depot Road Trust</b> Successful "rescue" of O'Neil Hill after it was sold by the state at auction in August 2004. A top land protection priority that connects two sections of Graves Farm. <i>See page 2 for more information.</i>	26.2	<b>Williamsburg</b>	<b>Graves Farm</b>
<b>MSPCA</b> Protection of ecologically significant land containing vernal pools and habitat for the rare Blanding's turtle and blue-spotted salamander.	16.0	<b>Groton</b>	<b>Rocky Hill</b>
<b>Eric and Angela Barbato</b> Worked cooperatively with owner of building lot to find an alternative home site, preventing fragmentation and incompatible development in this wild landscape and strengthening the connection between the sanctuary and Quabbin Reservoir.	3.0	<b>Wendell</b>	<b>Whetstone Wood</b>
<b>T.S. Mann Lumber Company</b> High-priority parcel protects an important tributary to Whetstone Brook and strengthens the link between the sanctuary and Wendell State Forest.	88.0	<b>Wendell</b>	<b>Whetstone Wood</b>

Purchases of Conservation Restrictions	Acres	Municipality	Sanctuary
<b>Town of Holliston</b> Key stepping-stone in an effort to create a protected greenway stretching from Holliston center north and west to Ashland State Park. Completed in partnership with the <b>Town of Holliston</b> .	29.4	<b>Holliston</b>	<b>Waseeka</b>
<b>David and Rachel Ernst</b> Protection of ecologically significant coastal waterfront property containing rare turtle habitat through a partnership with the <b>Town of Wellfleet</b> and <b>The Wellfleet Conservation Trust</b> .	6.4	<b>Wellfleet</b>	<b>Wellfleet Bay</b>
<b>Kathleen S. Anderson Trust</b> Collaborative effort with <b>The Wildlands Trust of Southeastern Massachusetts</b> to protect Wolf Trap Hill Farm, an ecologically significant property located in the Taunton River watershed. <i>See page 3 for more information.</i>	90.0	<b>Middleboro</b>	<b>n/a</b>

Gifts of Sanctuary Land	Acres	Municipality	Sanctuary
<b>Beals Estate</b> Gift of property in the heart of the sanctuary, east of the former bed of the Mill River, helping to complete Mass Audubon's ownership of the meadow and forest between urban Northampton and the Connecticut River oxbow.	2.5	<b>Northampton</b>	<b>Arcadia</b>
<b>Bentley Building Corporation</b> Donation of a strategically important parcel containing a trail that connects to the Nonset Brook area of the sanctuary and to town conservation land.	3.0	<b>Westford</b>	<b>Nashoba Brook</b>
<b>TJH, LLC</b> Gift of a high-priority parcel containing rare species habitat adjacent to Hannah Eames Brook in conjunction with an over-55 development project.	4.5	<b>Marshfield</b>	<b>North River</b>
<b>Anne and Michael Babcock</b> Donation of three lots containing woodlands, wetlands, and a small stream that connect the sanctuary to the Ashland State Park and a YMCA camp.	2.0	<b>Ashland</b>	<b>Waseeka</b>

Gifts of Conservation Restrictions	Acres	Municipality	Sanctuary
<b>M.L. Carter Realty Trust II</b> Initial phase of project to conserve Broad Hill Farm, a large and scenic property in Holliston that includes Bald Hill, the highest point in town.	42.3	<b>Holliston</b>	<b>Waseeka</b>
<b>Nicholas Arguimbau</b> Protection of forest and fields on the western slope of the high-quality Gale Brook valley, connecting with existing and future conservation land.	40.0	<b>Warwick</b>	<b>n/a</b>

Land Protected via Conservation Assistance to Other Organizations and/or Agencies	Acres	Municipality	Sanctuary
<b>David and Richard Green</b>	59.5	<b>Spencer</b>	<b>Burncoat Pond</b>

## Land Under Mass Audubon Stewardship as of June 30, 2006

Acres Owned by Mass Audubon	28,029.0
Acres Under Mass Audubon Conservation Restriction	4,147.7
<b>Total Acres of Protected Land</b>	<b>32,176.7</b>

## A Message from the Treasurer

The financial results of Massachusetts Audubon Society, Inc., for fiscal year 2006 reflect the health and vitality of the organization. Our financial stability is due to the generosity of our members, the professionalism and hard work of our staff and volunteers, and the responsible fiscal management exercised by our officers and board. We gratefully acknowledge everyone who has helped to make this year so successful.

During FY 2006, Mass Audubon continued to record strong revenues from gifts, grants, and government contracts for general operations. Program income, largely generated by our sanctuary system, also showed a healthy increase. Expenses were in line with our budget. The overall result for FY 2006 was a modest deficit from operations and a surplus after the addition of unrestricted bequests.

Sincerely,

Simon (Chip) Walker

General Operating Fund Results	FY2006	FY2005	FY 2004
Gifts and Grants	\$3,573,364	\$3,521,526	\$3,041,713
Membership Dues	2,977,111	2,987,773	3,009,954
Program Income	5,369,038	5,202,419	5,028,701
Investment Income	4,267,098	4,069,605	4,124,095
Other Income	232,503	323,419	285,481
<b>Total Operating Income</b>	<b>\$16,419,114</b>	<b>\$16,104,742</b>	<b>\$15,489,944</b>
Salary and Benefits	\$11,857,098	\$12,158,001	\$11,581,930
Nonsalary Program Expenses	5,241,210	4,524,989	4,613,943
Other Expenses	(431,010)	(328,310)	(467,326)
<b>Total Operating Expenses</b>	<b>\$16,667,298</b>	<b>\$16,354,680</b>	<b>\$15,728,547</b>
<b>Operating Deficit</b>	<b>\$(248,184)</b>	<b>\$(249,938)</b>	<b>\$(238,603)</b>
Unrestricted Bequests*	\$400,994	\$585,491	\$1,583,631
<b>Total Surplus</b>	<b>\$152,810</b>	<b>\$335,553</b>	<b>\$1,345,028</b>

\*Pursuant to Mass Audubon financial policies, unrestricted bequests are added to a reserve fund, which is available for capital projects (land purchase, septic system replacement, lead paint removal, major building repairs, etc.). However, accounting principles require that unrestricted bequests be reported in the operating fund.

A complete copy of the audited financial statements is available upon request from Mass Audubon Vice President for Operations Bancroft Poor. Members should feel free to call him at 781-259-2110 with any questions about Mass Audubon's finances.

# FISCAL YEAR 2006 SUPPORTERS

Mass Audubon gratefully acknowledges the individuals, foundations, corporations, and government agencies whose generous financial contributions and pledges provided critical support for our conservation, education, and advocacy efforts between July 1, 2005, and June 30, 2006. We are pleased to recognize the following leading contributors and express our appreciation to our more than 100,000 members. For gifts of land received during this period, see page 8.

## LEADERSHIP GIVING PROGRAM

Including Individuals  
and Individuals Giving  
through Foundations

25,000+

Anonymous (8)  
Nicholas C. Arguimbau  
C. Hunter & Pamela T. Boll<sup>b</sup>  
Anne & Peter Brooke/  
Peter A. Brooke Fund<sup>vb</sup>  
Franz & Anne Colloredo-Mansfeld/  
Franz & Anne Colloredo-Mansfeld  
Fund of the Essex County  
Community Foundation<sup>b</sup>  
Mrs. Frederick C. Crawford<sup>b</sup>  
Eugene Bicknell Doggett &  
Nina Lord Doggett/Eugene B.  
& Nina L. Dogget Fund<sup>vb</sup>  
Mr. & Mrs. Richard S. Emmet Jr.<sup>b</sup>  
Brent Harris  
Edwin M. Libbin<sup>1</sup>  
Mr. & Mrs. George C. Lodge Jr./  
GC & JW Lodge Fund<sup>vb</sup>  
The Family & Friends of  
Raymond & Eleanor Longley  
Merloyd Ludington & John Myers<sup>b</sup>  
William P. & Amanda C. Madar  
Mr. & Mrs. Peter Nicholas<sup>b</sup>  
Mason & Ina Phelps<sup>b</sup>

Patricia T. & James W. Poitras<sup>b</sup>  
Mary & Ed Schein<sup>b</sup>  
Walter & Phyllis Smith  
Mrs. Thornton Stearns<sup>b</sup>  
Mr. & Mrs. John L. Thorndike/  
Thorndike Family Charitable  
Fund at The U.S. Charitable  
Gift Trust

\$10,000–\$24,000

Priscilla H. Bailey  
Tom & Judy Bailey/Bailey  
Family Foundation  
Arthur & Camilla Blackman  
Mr. & Mrs. Brian A. Brooks<sup>b</sup>  
Nancy R. Chisholm<sup>b</sup>  
Dick Chute<sup>b</sup>  
William Constable/  
William G. Constable  
Charitable Foundation<sup>G</sup>  
Mr. & Mrs. Albert M. Creighton Jr.<sup>b</sup>  
Aina S. Cutler  
Will & Ami Danoff<sup>b</sup>  
Dr. Edmund P. DeLaCour/The  
DeLaCour Family Foundation<sup>b</sup>  
Margaret B. Elmer  
Mr. & Mrs. Thomas D. French<sup>b</sup>  
Robert H. Grohskopf Jr. &  
Lisa Van Tassel<sup>b</sup>  
Mary E. Hastings  
John & Jillian Hayes/  
Hayes Family Fund<sup>Gb</sup>

Sigmund & Barbara Herzstein/  
Sigmund E. and Barbara B.  
Herzstein Fund of the  
Vanguard Charitable  
Endowment Program<sup>b</sup>  
Mrs. John L. Hess  
Howard & Elizabeth Johnson<sup>b</sup>  
Laura A. Johnson &  
Arthur W. Rogers<sup>b</sup>  
Erik & Sarah Knutzen Family<sup>b</sup>  
Fran & Teddi Laurin<sup>b</sup>  
Jim & Jane Levitt<sup>b</sup>  
Richard & Roberta Longley  
Mr. & Mrs. George M. Lovejoy Jr.  
Richard Mlynarik &  
Elizabeth Willey  
Jonathan & Jessie Panek<sup>b</sup>  
Mr. & Mrs. Franklin Parker  
Gustaf E. Pearson  
Esther Pelletier<sup>b</sup>  
Bertram & Marla S. Perkel/  
The Perkel Family Fund at  
the Cape Cod Foundation  
Jeffrey F. Peters & Christina  
Sage Peters<sup>b</sup>  
Mary E. Porter  
Harriet B. Prindle  
John & Linda Riehl<sup>b</sup>  
William C. & Dorothy R. Shattuck  
Jim Sperling & Ginny Loeb/  
The Dorothy and Jonathan  
Rintels Charitable Foundation<sup>b</sup>

Patricia A. Thornton<sup>b</sup>  
Mr. & Mrs. John H. Valentine<sup>b</sup>  
Mr. & Mrs. Neil Van Sloun/  
Van Sloun Foundation

\$5,000–\$9,999

Anonymous (16)  
Diane & Dennis Arseneau<sup>b</sup>  
Forrest Berkley & Marcie Tyre<sup>b</sup>  
Morene R. Bodner &  
David P. Carlisle<sup>b</sup>  
Mr. & Mrs. Elliott G. Carr  
Alfred D. Chandler III & Susan  
Esco Chandler/Riptide Fund<sup>vb</sup>  
Mr. & Mrs. John Chase  
Jennifer & Edmond Choi<sup>b</sup>  
John W. & Bayard H. Cobb<sup>b</sup>  
Ferdinand & Susanna  
Colloredo-Mansfeld<sup>b</sup>  
David & Victoria Croll/  
The Croll Foundation<sup>b</sup>  
Bob & Vickie Cunningham<sup>b</sup>  
Herbert & Pauline Emilson/  
Emilson Family Fund<sup>Gb</sup>  
Kathleen Emrich &  
Robert Sherwood  
Paul M. Kaplan & Brenda Eunson<sup>b</sup>  
Barbara E. Fargo<sup>b</sup>  
Lawrence E. Felton &  
Christine M. Bordonaro  
Elaine Foster<sup>b</sup>  
John C. & Janet A. Fuller<sup>b</sup>  
Cyrus F. Gibson<sup>b</sup>  
Beth Kressley Goldstein &  
Dennis Goldstein  
Jeremy & Hanne Grantham/  
Jeremy & Hannelore Grantham  
Charitable Trust<sup>b</sup>  
Paul Hamel<sup>b</sup>

John & Nancy Hammond<sup>b</sup>  
Alynn & Andrew Harvey<sup>b</sup>  
Teri Henderson, Tim Ryan, &  
Matt Ryan  
Deborah & Frank Howard<sup>b</sup>  
Karen Howat  
Mr. & Mrs. Arnold W. Hunnewell  
Nora F. Huvelle & David  
Lubin/Pine Point Foundation<sup>b</sup>  
Pam & Rob Kindler  
Chris & Sue Klem<sup>b</sup>  
Pamela Kohlberg/  
Pamela Kohlberg Fund<sup>Gb</sup>  
Cindy & Seth Lawry/  
Lawry Family Fund<sup>G</sup>  
Stephen & Valerie Loring<sup>b</sup>  
Anne R. Lovett & Stephen G.  
Woodsum/Lovett-Woodsum  
Family Charitable Foundation<sup>b</sup>  
Noel A. Mann  
Kathy & Rives McGinley  
Paul & Ellen Mintzer  
Fred & Barbara Murphy  
Albert W. Nickerson<sup>b</sup>  
J. David Officer &  
Dr. Marcia J. Wade<sup>b</sup>  
Ronald P. O'Hanley<sup>b</sup>  
Mrs. Stephen D. Paine<sup>b</sup>  
Morgan Palmer/Morgan Palmer  
Charitable Fund<sup>vb</sup>  
Andrew S. & Samuel S. Pang<sup>b</sup>

Anne Pennington  
Mr. & Mrs. Richard S. Perkins Jr.  
Sally Quinn<sup>b</sup>  
Robert D. & Amelia R. Rands<sup>b</sup>  
Marc & Emily Isberg Reardon<sup>b</sup>  
Dwight & Margaret Robinson<sup>b</sup>  
E.A. Shumaker  
Art & Corinne Smith<sup>b</sup>  
Nancy Soulette<sup>b</sup>  
Lee & Judith R. Spelke/Judy and  
Lee Spelke Charitable Fund<sup>Gb</sup>  
Debbie & Jack Swenson  
Richard D. & Marian Thornton  
Tom & Karen Tierney  
Conrad H. & Harriet Todd<sup>b</sup>  
Mrs. Jephtha H. Wade<sup>b</sup>  
Suzanne Weinstein  
Dr. Philo F. Willetts Jr.

\$2,500–\$4,999

Anonymous (12)  
Rich & Heidi Angle  
Julian D. Anthony/Fiduciary  
Charitable Foundation  
James Baird  
Chris B. & Julie P. Barker/  
Christopher & Julie Barker Fund<sup>G</sup>  
Janet & Robert Bissell  
James T. & Karen P. Brusio  
Sara H. Brydges<sup>b</sup>

<sup>b</sup> denotes Founder's Circle members—individuals who have provided \$2,500 or more in support for general operations or a particular sanctuary or program.

<sup>G</sup> denotes a fund associated with the Fidelity Charitable Gift Fund.

<sup>v</sup> denotes a fund associated with the Boston Foundation.

<sup>1</sup> denotes an individual who passed away this year.

Anne & Alexander Buck Jr./  
Anne and Alexander K. Buck Jr.  
Fund of the Essex County  
Community Foundation<sup>b</sup>  
Mr. & Mrs. Charles C. Cabot III<sup>b</sup>  
Martha J. Carter & Family<sup>b</sup>  
Barbara Centola  
Nancy & Matt Chabot<sup>b</sup>  
Ann & Jared Chase<sup>b</sup>  
Carolyn McCane-Chin & David Chin  
Karl M. & Andrea A. Christianson  
Barbara F. Coburn  
Hamilton & Barbara B. Coolidge  
Mr. & Mrs. Hugh W. Crawford Jr.  
Dr. Modestino & Mrs. Nancy  
Criscitiello/Criscitiello  
Family Fund<sup>Gb</sup>  
Eric & Nancy W. Cutler  
Mr. & Mrs. Thomas A. DeMarco III/  
DeMarco Charitable Trust<sup>Gb</sup>  
Mr. & Mrs. Robert Doran/  
Doran Family Charitable Trust<sup>b</sup>  
Jennifer Johnson Duke & Joe Duke<sup>b</sup>  
George F. Ellison  
Mr. & Mrs. Dominic Ferrante/  
Ferrante Charitable Gift Fund<sup>G</sup>  
Hollis & Rosemary French/  
Hollis French Charitable Gift  
Account of the Schwab Fund  
of Charitable Giving<sup>b</sup>  
Joan Geoghegan  
Carol L. Gibbs<sup>b</sup>  
Thaddeus R. & Elizabeth Gillespie<sup>b</sup>  
Peggotty & Peter Gilson  
Ann & David Gray<sup>b</sup>  
Deborah A. Hawkins  
Graeme W. & Rebecca  
Carr Henderson  
Cynthia & Arnold Henson<sup>b</sup>  
Crosby Hitchcock<sup>b</sup>

John Hitchcock<sup>b</sup>  
Mr. & Mrs. Sturtevant Hobbs<sup>b</sup>  
Dr. & Mrs. Edwin Hubbard<sup>b</sup>  
Richard Hussong &  
Melinda E. Stewart<sup>b</sup>  
Elizabeth B. Jackson<sup>1</sup>  
Steven A. Kaufman &  
Arlene E. Handschuch<sup>b</sup>  
Scott Keller & Laurie Johnson  
B.A. & Judith King/The Judy and  
Tony King Foundation<sup>Gb</sup>  
Sam & Anna Knight/Sam and  
Anna Knight Fund<sup>Gb</sup>  
Ronald F. Ladner  
Lynn L. & Richard Landy  
Miriam G. Lasher<sup>b</sup>  
Virginia Maloney Lawrence<sup>b</sup>  
John A. Lechner IV &  
Mary F. Higgins<sup>b</sup>  
Marjorie E. Leggett<sup>b</sup>  
Anne S. Lombard<sup>b</sup>  
Clara R. Ludwig  
William F. & Sheila R. Macauley/  
Macauley Family Fund<sup>Gb</sup>  
Gary & Karen Martin/  
Martin Family Fund of the  
Fleet Charitable Gift Fund<sup>b</sup>  
Kate De Normandie McCarey &  
Kevin McCarey/Kevin and Kate  
McCarey Fund<sup>Gb</sup>  
Sarah Metcalf  
Henrietta N. Meyer/  
Henrietta N. Meyer Fund<sup>Gb</sup>  
David & Sharon Neskey/  
Neskey Family Fund<sup>Gb</sup>  
Al & Zoe Nierenberg/Evergreen  
Charitable Fund, Inc.<sup>b</sup>  
Susanna & David Place  
Kenneth E. & Linda Sue Plageman<sup>b</sup>  
William & Helen Pounds<sup>b</sup>  
Robert Prescott  
Dr. & Mrs. Ganson Purcell Jr.<sup>b</sup>

Mr. & Mrs. Edward H. Raymond  
Thomas T. & Deborah B. Riquier<sup>b</sup>  
Barbara & Stanley Schantz/  
Fels En Meer Charitable Fund<sup>Gb</sup>  
Arthur F. Schrader  
Mary & Ted Shasta<sup>b</sup>  
Sven E. Siemen<sup>b</sup>  
Susan L. Sloan<sup>b</sup>  
Phyl & Paul Solomon  
Dr. Lisa A. Standley  
Lanny & Anne Thorndike<sup>b</sup>  
Dinah Vischer-Buechner/  
Dinah Vischer-Buechner  
Advised Fund<sup>G</sup>  
James & Margaret Wade  
Chip Walker  
Stephen L. Wasby  
Nancy L. Weiss  
Virginia C. Welles & Dwight L. Gertz  
Esther C. Williams<sup>b</sup>  
Lissa & Carter Winstanley  
Dr. Jack & Mrs. Judith Wittenberg/  
Jack & Judith Wittenberg Fund<sup>v</sup>  
Mr. & Mrs. Michael J. Zak<sup>b</sup>

### \$1,250–\$2,499

Anonymous (19)  
Amy & David Abrams  
Ann & Bill Allan  
Ramon L. & Anne Alonso/  
Alonso Charitable Fund<sup>G</sup>  
Stephen H. & Barbara M. Anthony  
Susan R. Avery  
Robert P. Ball  
James H. & Georgia B. Barnhill  
Michael & Donna Bass  
Suzanne & Henry Bass  
Molly & John Beard/Beard Family  
Charitable Trust

James Becker & Aber Lynch  
Roberta & George Berry  
Edward L. Bigelow Jr.  
Jerry & Grace Bird/Grace and  
Walter Bird Fund<sup>G</sup>  
Mrs. Howard M. Booth  
Doris Bouwensch  
Nancy Brach/Brach Family  
Charitable Foundation  
Frank & Adrienne Bradley  
Kib & Tess Bramhall  
The Breslin Family  
Sierra Bright  
Anne & Ken Brock/Anne and  
Kenneth Brock Fund of the  
Cape Cod Foundation  
Dorothy A. Brown  
Margaret Coffin Brown &  
Chris Brown  
Pierce B. & Elise R. Browne  
Mr. & Mrs. Alexander K. Buck  
Ellen & Stephen Burbank/  
Hermes Foundation

Elizabeth J. Burke &  
Robert M. Burke III  
Katharine F. Burnett  
Arthur & Betsy Butters  
Ellen Cabot  
John & Annabelle Caffry  
Sheila Carroll & Mark Lynch  
Samuel & Caroline Chapin  
Richard M. Charlton  
Dr. Arthur C. Cheng &  
Dr. Winnie Wong  
Susan B. & David D. Clark  
Mr. & Mrs. Robert Clay  
Kathleen Clayton  
Richard & Dorothy Cole  
Susan Coolidge & Dennis Wolkoff/  
Susan Coolidge & Dennis  
Wolkoff Account<sup>G</sup>

Thomas J. & Cynthia Costin  
Richard W. Couch Jr.  
Lewis S. & Edith L. Dabney/  
Kenwood Foundation  
Kevin B. Darcy &  
Stephanie B. Prisch  
Len & Barbara Darling  
Mrs. James H. Davis  
Laura Davis  
Bruce & Lynn Dayton  
Dr. C. Russell de Burlo &  
Mrs. Edith T. de Burlo  
Martha L. & William P. Densmore/  
Martha L. & William P. Densmore  
Fund at the Greater Worcester  
Community Foundation  
David & Carolyn Dettinger  
Anne R.P. Dewees  
Dr. John & Mrs. Mary Deyst



*Richard Emmet*

“I am devoted to Mass Audubon’s mission and to the many wonderful people on its staff and Board. My devotion is rooted in part by my personal passion for birds and other wildlife and for the natural resources that sustain them, and in part by my awareness of all that we have lost during my lifetime. I have been lucky, indeed, for the many birds I have seen and heard and for the many beautiful places where I have enjoyed them. I want to help preserve as many of these as possible for future generations.”

*Richard Emmet, Westford, Massachusetts*

## FISCAL YEAR 2006 SUPPORTERS *continued*

Peter H. Dodson  
 Suzanne M. Dufault  
 Frank Dunau & Amy Davis  
 Mr. & Mrs. George P. Edmonds Jr.  
 Ms. C. Campbell Edwards  
 Alexander Ellis III  
 Judith Emmons  
 David & Edith Engel/  
 Edith and David Engel Fund<sup>g</sup>  
 Romeyn Everdell  
 Hugh C. Ferguson  
 Bruce Fishbein & Sara Shields  
 Gregory Fishbein  
 Peter & Bette Fishbein  
 Stephen Fishbein  
 Nancy & Richard Forbes  
 Philip & Lucy Foster  
 Nora Frank & Walter Houseman  
 Richard & Carol French

Dr. Robert L. French  
 Mr. & Mrs. Robert L. Gable  
 Michael J. & Linda L. Garrity  
 Craig & Nancy Gibson  
 Lorna Gibson & Jean Hess  
 John T. Goodhue & Anne W. Smith  
 Kay Davis Grado  
 Carolyn Gray  
 Alfred L. & Sally Griggs/  
 Alfred L. & Sally Griggs Fund  
 Ann & Gary Gurka  
 Jane C. Hallowell  
 Susan P. & Mark Hardy  
 Linda Harring  
 Nan Harris/The William H.  
 Harris Foundation  
 Mr. & Mrs. Keith W. Harrison  
 Sherry Haydock  
 Frank & Jane Heart/  
 Heart Family Fund

Donald F. Henderson  
 Joseph & Victoria Hibbard  
 James P. & Grace R. Hoffmann/  
 Hoffmann Family Fund<sup>g</sup>  
 Mr. & Mrs. Richard V. Howe  
 Charles W. Hubbard III  
 Ruth & Robert T. Hucks Jr.  
 Susan Hunter  
 Mr. & Mrs. Russell E. Isaia  
 Frank Isik & Nicole Gibran  
 Shirley Muirhead Jenkins  
 Ken M. & Hilary Johnson  
 Sandra & Richard E. Johnson  
 Mr. & Mrs. Malcolm W. Johnston  
 George E. & Helen Keeler  
 Lorna Keith  
 Charles W. Kellogg II &  
 Gillian S. Kellogg  
 Paula S. Kent  
 Maria & Wes Kussmaul/  
 The Kussmaul Family Fund<sup>g</sup>

Susan K. & Jeffrey A. Landon  
 Mr. & Mrs. David S. Lee  
 Mr. & Mrs. Henry Lee  
 Sally D. Leighton  
 David & Persis Levy  
 Nathaniel & Karen Levy  
 Janice Lewyn  
 Debra M. Listernick  
 Joe Loisel  
 Dr. Christopher Lovelock  
 Attorney Ray Lyons  
 Peter L. MacDonald  
 George & Ann Macomber  
 Mrs. L.B. Magruder Jr./Burns &  
 Beatrice Magruder Fund<sup>g</sup>  
 Ann B. Mahoney  
 Mr. & Mrs. William S.  
 Malcom/Elinor and  
 William Malcom Fund<sup>g</sup>  
 Marilyn & Don Malpass  
 John S. & Katherine A. Marini  
 Bernard J. McHugh &  
 Frances H. Clark  
 Ed & Kate McNierney  
 Mary H. & Donald R. Melville  
 Elizabeth Meserve & Erik Meserve/  
 Robert W. and Gladys S. Meserve  
 Charitable Trust  
 David & Gail Metcalf  
 Mr. & Mrs. R.T. Paine Metcalf/  
 Barbara Putnam Metcalf &  
 Robert T.P. Metcalf Fund  
 Murray R. Metcalfe &  
 Nancy T. Lukitsh  
 Michael Miller &  
 Mary Dockray-Miller  
 Mrs. Joshua Miner  
 Mr. & Mrs. George B. Mock  
 Jean & Glenn Morrow  
 Mr. & Mrs. Douglass H. Morse

Martha S. Mugar  
 Pamela Musk  
 Mr. & Mrs. Harold L. Nelson  
 Beatrice J. & Peter Nessen  
 Mr. & Mrs. Frank Nicholson  
 Jean A. Murphy Nicolazzo &  
 Barbara G. Murphy  
 Judy Norris  
 Timothy & Corinne Noyes  
 Jane M. & A. Neil Pappalardo  
 Mary & Rienzi Parker/  
 Field Parker Fund<sup>v</sup>  
 Peter & Barbara Pelland  
 Mr. & Mrs. Finley H. Perry Jr.  
 Morey Phippen & Brian  
 Adams/Hurdle Hill Foundation  
 Judith Pierce & Robert M. Graham  
 Adele W. Pike & John Hodgman  
 Polly & Bob Platten/Marian Craig  
 Leers Charitable Trust  
 Mrs. Hitt Potter  
 Dr. Thomas B. Prebble &  
 Ms. Claudia A. Trimarco  
 George Putnam III &  
 Kathy Z. Putnam  
 Mr. & Mrs. Eugene Record Jr.  
 Steve & Marie Rizzo  
 Alison Robbins & Bryan Windmill  
 Mary Lou Roberts  
 Professor & Mrs. Nicholas Robinson  
 Mr. & Mrs. Walter Rosenfeld Jr.  
 Dawson & Deb Rutter  
 Marsha C. Salett  
 Gerald Salvatori  
 Bill & Gerie Schumann  
 Mr. & Mrs. Daniel Senie  
 Robert H. Shaw  
 Alice M. & David W. Shearer/  
 Alice & David Shearer Fund  
 at the Community Foundation  
 of Western Massachusetts

Willow B. Shire/Willow Shire  
 Charitable Gift Fund<sup>g</sup>  
 Robert W. Sides  
 Sandra & Robert Silk  
 Ron & Mary Skates  
 Ed & Ann Snape  
 Karen R. Sollins  
 Mr. & Mrs. Harry F. Sprong  
 Irene M. Staehelin  
 Caren & William Stangel/  
 Stangel Family Fund<sup>g</sup>  
 Mr. & Mrs. Vincent P. Stanton/  
 Vincent P. & Mary Alice Jacob  
 Stanton Fund<sup>g</sup>  
 Ava Steenstrup  
 Garrett J. Stuck & Pamela Coravos  
 J. Antony & Marilyn Swartz-Lloyd  
 Dr. Mitchell L. Sweet &  
 Ms. Andrea Peraner-Sweet  
 Dr. William E. Swift Jr.  
 Jeffrey & Linda L. Swope  
 Mr. & Mrs. Hooker Talcott/  
 James Talcott Fund at The  
 New York Community Trust  
 Donald & Ruth Taylor  
 Elizabeth A. Tepper  
 Mr. & Mrs. Thomas W. Thaler  
 Lois L. Thibault & Jacques Peters  
 Maryann Thompson  
 Linda Thrasher & Hillary Thrasher  
 George Ticknor  
 Linda & Jim Toomey  
 Ruth Tucker/Ruth Tucker Fund<sup>g</sup>  
 Michael & Virginia Ursin  
 Mary Van Vleck/Mary Van Vleck  
 Gift Fund<sup>g</sup>  
 Sven & Rosamond Vaule/Sven  
 and Rosamond Vaule Fund<sup>g</sup>  
 Robert & Lois Vessels  
 Paul Vogel

“The Massachusetts Cultural Council is proud to support Mass Audubon’s mission of protecting our natural resources for current and future generations. By investing public funds appropriated by the Massachusetts legislature, we recognize the valuable role you play in enhancing our quality of life and that of future generations. We especially applaud Mass Audubon’s commitment to ensuring that its resources and education programs reach diverse communities.”

*Mary Kelley, Executive Director,  
 Massachusetts Cultural Council*



*Mary Kelley*

William T. Wachenfeld/  
William T. Wachenfeld Fund<sup>g</sup>  
Ellen & Howard Wack  
Mrs. William E. Walker  
Neil & Elise Wallace  
David & Jade Walsh/  
The Free Lunch Foundation  
Joan Walsh & David Sibley  
Thomas T. Warren  
Betsy & Bob Watson  
Meghan & Kent Weldon  
Richard & Carol Whalen  
Bancroft R. & Mercy Wheeler  
Mr. & Mrs. Holyoke L. Whitney  
Henry T. Wiggin  
Barbara D. Williamson  
Alan Wilson & Charlotte  
Bensdorp Wilson  
Frederic & Susan Winthrop  
Ken & Emily Wolf  
Elizabeth C. Zimmermann  
Mr. & Mrs. Laurence W. Zuelke

## CORPORATIONS, FOUNDATIONS, AND OTHER SUPPORTERS

### \$25,000+

Anonymous (1)  
Lloyd G. Balfour Foundation  
The Bromley Trust  
The Cedar Street Foundation  
Claneil Foundation  
EdVestors Collaborative Fund  
Fields Pond Foundation  
Charles Hayden Foundation  
Island Foundation, Inc.

The Ludcke Foundation  
Mellon Charitable Giving Program/  
Arthur F. Blanchard Trust  
George H. and Jane A. Mifflin  
Memorial Fund  
New England Aquarium  
Richard Saltonstall  
Charitable Foundation  
William E. Simon Foundation  
Toward Sustainability Foundation  
Edwin S. Webster Foundation

### \$10,000 - \$24,999

Anonymous (3)  
Alces Foundation  
The George I. Alden Trust  
American Planning Association  
William P. Anderson Foundation  
Antioch University  
The Biber Foundation  
Bovenzi Inc.  
Brabson Library and  
Educational Foundation  
Elise B. and Earl Bradley  
Charitable Fund  
Cambridge Trust Company  
The CARLISLE Foundation of  
Framingham, MA  
Citizens Bank  
Copeland Family Foundation, Inc.  
Fred Harris Daniels Foundation  
Gilbert H. Hood Family Fund at  
the Boston Foundation  
The Max and Victoria Dreyfus  
Foundation, Inc.  
The Marshall Frankel Foundation  
Greater Worcester  
Community Foundation  
Green Family Fund of the  
Jewish Communal Fund

H. Patterson Hale Jr.  
Charitable Foundation  
Harding Educational &  
Charitable Foundation  
The Grace & John Harrington  
Foundation  
Helen G. Hauben Foundation  
The Ramsey McCluskey  
Family Foundation  
Mildred H. McEvoy Foundation  
Medical Information Technology, Inc.  
The Ottmar Foundation  
Panwy Foundation, Inc.  
The Peabody Foundation, Inc.  
Saquish Foundation  
Sylvan Nursery, Inc.  
Three Bays Preservation, Inc.

### \$5,000 - \$9,999

Anonymous (2)  
Beard Motors, Inc.  
Berkshire Bank Foundation  
Bird Watcher's General Store  
Coastal America Foundation  
Eugene A. Dexter Charitable Fund  
at the Community Foundation  
of Western Massachusetts  
Duxbury Beach Reservation, Inc.  
Earth Share of New England  
The Edey Foundation  
EnTrust Fund  
John P. Falk/David Falk  
Memorial Fund<sup>b</sup>  
The Fassino Foundation, Inc.  
Felix Neck Wildlife Trust, Inc.  
GE Foundation  
Grand View Golf Course, Inc.  
The Greeley Foundation  
The Hanover Insurance Group, Inc.

IBM International Foundation  
InterGen Energy, Inc.  
Edward Bangs Kelley and Elza  
Kelley Foundation  
Nuttall Ornithological Club:  
Charles Blake Fund  
Bessie Pappas Charitable Foundation  
Olive Higgins Prouty Foundation  
Recreational Equipment, Inc.  
Lydia B. Stokes Foundation  
Swarovski Optik North America Ltd.  
Texas Instruments  
Youth Friends Association, Inc.  
Zell Family Foundation

### \$2,500 - \$4,999

Anonymous (2)  
Agua Fund, Inc.  
Analog Devices  
A.U. Bird Trust  
Boston Guild of Oenophiles  
Brian E. Boyle Charitable Foundation  
Canyon Ranch Management, LLC  
Consigli Construction Co., Inc.  
Cranberry Square Dermatology, PC  
Eagle-Tribune Publishing Co.  
Fallon Health Care System  
Global Partners LP  
Gunst Charitable Foundation  
The Hart Foundation  
The Pierre V. & Margaret T.  
Heftler Foundation  
Intex Solutions, Inc.  
The Agnes M. Lindsay Trust  
Mancini Charitable Foundation<sup>b</sup>  
Massachusetts Association of  
Planning Directors, Inc.  
Newburyport Five Cents  
Savings Bank

Partnership for Harrier Habitat  
Poitras Memorial Fund  
The Prospect Hill Foundation  
Margaret Walker Purinton  
Foundation  
Frank Reed & Margaret Jane  
Peters Memorial Fund  
Save Popponesett Bay, Inc.  
Sheehan Family Foundation  
Shurtleff Children's Services, Inc.  
State Street Corporation  
Stearns Charitable Trust  
Sudbury Valley Trustees  
Target Corporation  
Wal-Mart Foundation  
Wellspring Fund of the Peace  
Development Fund  
Herbert O. Wolfe Foundation

### \$1,250-\$2,499

Anonymous (1)  
American Birding Association  
Bank of America Matching  
Gifts Program  
Beacon Hill Garden Club  
Belmont Hill School  
Bernier's Market, Inc.  
Brewer & Lord LLC  
Cambridge Community Foundation  
Cape Cinema Group Inc.  
Church of Our Redeemer  
Conservatree  
Melvin S. Cutler/Melvin S. Cutler  
Charitable Foundation  
Draper Laboratory  
The Felis Fund  
FinePrint Software, LLC

## COPORATE FAMILY MEMBER PROGRAM

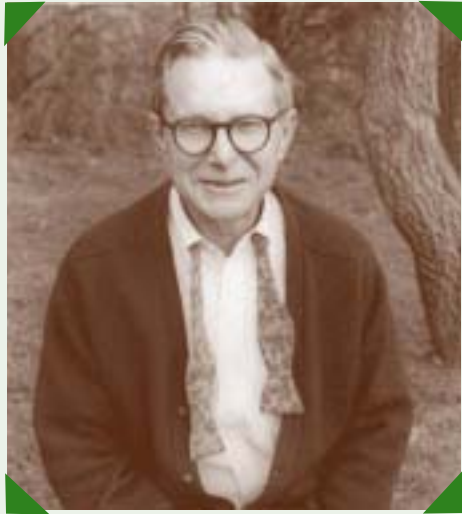
Mass Audubon is pleased to recognize the following companies for supporting our mission in 2006 through their participation in our Corporate Family Member Program.

**First National Bank of Ipswich**  
**Global Companies LLC**  
**InterGen Energy, Inc**



## FISCAL YEAR 2006 SUPPORTERS *continued*

### *Francis "Pat" S. Moulton Jr.*



During this past year we said goodbye to a dear friend of Mass Audubon—the inimitable Francis "Pat" S. Moulton Jr. For many decades, Pat made known his never-ending interest in our work through his active involvement and generous support.

As a member of the Mass Audubon Board of Directors for more than two decades, Pat helped to shape the future of the organization. As President of the Board, he knew how a Board should work, and he made certain that his fellow members always kept the well-being of the organization uppermost in their decisions. After expertly serving his terms

on the Board, Pat was elected as an Honorary Director in 1982. His interest in and support of Mass Audubon never diminished. He was a charter member of the Leadership Friends, and he remained one throughout the rest of his life. He also provided long-term support for the principles he believed in, not only through a life-income gift he funded but also through the terms of his will.

Pat was an expert birder. He loved birdwatching on a local and international level. But his interests in the environment were far more than a hobby. He felt strongly that conservation, education, and advocacy all had to be combined in a meaningful way to ensure that we would be successful in our efforts to safeguard nature's treasures.

Mass Audubon was indeed fortunate to have had this fine man serve as a director on its Board—a man who helped to form its destiny. His love of nature is our legacy. He is and will be sorely missed by all who had the good fortune to know him. •

Friends of Sengekontacket  
 William J.J. Gordon  
 Family Foundation  
 Grantham, Mayo, Van Otterloo &  
 Co. LLC  
 D.M. Grose Company, Inc.  
 Land Trust Alliance  
 Northeast Program  
 Marian Craig Leers Charitable Trust  
 Lincoln Ridge Homeowners  
 Association  
 Manulife Financial  
 Marr Rigging Company, Inc.  
 Massachusetts Orchid Society  
 Helen & William Mazer Foundation  
 McKinsey & Company, Inc.  
 Nantucket Garden Club, Inc.  
 National Grid, New England  
 Power Service Company  
 Norfolk Lions Club  
 The Robert Treat Paine Association  
 The Gertrude Pomeroy Fund  
 Sensata Technologies  
 The Edith Glick Shoolman  
 Children's Foundation  
 Smith College Campus School  
 State Street Global Advisors  
 TD Banknorth Massachusetts  
 H.E. Thompson Foundation  
 United Way of Tri-State  
 Verizon Foundation  
 The Weinshel Goldfarb Foundation  
 Whole Foods Market  
 Wrentham Lions Club

### GOVERNMENT AGENCIES

**Local and State Agencies**  
 Blackstone River Valley National  
 Heritage Corridor Commission

City of Boston  
 Town of Sandwich  
*Commonwealth of Massachusetts*  
 Executive Office of  
 Environmental Affairs  
 Department of Conservation  
 and Recreation  
 Department of Fish & Game  
 The Massachusetts  
 Cultural Council  
 The Massachusetts  
 Environmental Trust  
 Massachusetts Turnpike  
 Authority  
 MassWildlife  
 Massachusetts Natural  
 Heritage & Endangered  
 Species Program

### Federal Agencies

Division of Marine Fisheries  
 Institute of Museum and  
 Library Sciences  
 Marine Biological Laboratory  
 Minerals Management Service  
 National Park Service  
 U.S. Fish & Wildlife Service  
 U.S. Gulf of Maine Association  
 USDA Natural Resources  
 Conservation Service

### MEMORIALS

Thoughtful gifts were  
 made in memory of the  
 following individuals

Mary Ellen Lane Adams  
 Virginia Albee  
 Arthur & Dorothy Alexander  
 William Allan  
 Dr. Colin Amphlett

Paul T. Anderson  
 Elisha Atkins M.D.  
 Hamilton & Nancy Bailey  
 Wallace Bailey  
 Richard Baldauf  
 Dr. H. Thomas Ballantine  
 Paul C. Barnett  
 Nellie Barone  
 Beatrice Cumanda Bassett  
 Marjorie T. Beaudette  
 Frank J. Blanchard Jr.  
 Dr. Eldon A. Boling  
 Bill & Lilian Boothby  
 Hobart Braden  
 Robert Braun  
 David Breiten  
 Ida Brewer  
 Baiba Briedis  
 Dr. Thornton Brown  
 Rita C. Burke  
 Dr. Jeanne Canelli  
 Everett Carter  
 Mary Cedrone  
 Anita Clapp  
 Dorothy Cofran  
 Bell A. Cogbill  
 Robert P. Corrinet  
 Walter Corwin Jr.  
 Peter Courtney  
 Mattelaine C. Cranford  
 Olympia Crowley  
 Henry H. Cutler  
 Samuel E. Cutler Jr.  
 Robert Dalton  
 Mary Debilio  
 James A. Dempsey  
 Michael Dennis Donovan  
 Mark D. Dreese

Charles "Chuck" Dufault  
Raphaella Lenti Dunn  
Henrietta Kryger Ebels  
Keith D. Eisner  
Craig Ellis  
Lise B. Elson  
Elizabeth Farrell  
Marion L. Farrell  
Sandra Katz Feinberg  
Georgia C. Ferguson  
Paul Flaherty  
Ruth K. Forster  
Helen Foster  
Armin J. Frankel  
Frederick Freeman  
Edward D. Friedman  
Ms. Furash  
Jeanne Gallagher  
Flora Gobeille  
Sandra E. Goding M.D.  
Raleigh Fox Goldberg  
Peter D. Goldsmith  
Donna Mayberry Greenberg  
Marie-Christine Greenberg  
Pauline Clayton Greene  
Trudy & Bill Hammond  
William Wayne Hanley  
Charlotte Hanscom  
Rita Hansen  
Estelle Harding  
Ann Hargadon  
Thelma Hart  
Elizabeth Powell Haughton  
Bob & Gale Haydock  
Ruth A. Hill  
John J. Howes Jr.  
Charlotte B. Hubbard  
Carol Hughes

Eugenie Hughes  
Harry M. Judge M.D.  
Charles Kastanotis  
Daniel J. Keleher  
Frederick Kennedy  
Joyce Ann Kennedy  
Richmond G. Kent  
Bertha & Ralph  
Emerson Knowles  
Vernon G. Kousky  
William Ladd  
Gary M. La Fountain  
Zoica "Zoe" Lajoie  
Charles P. Lamplough  
Katharine P. Lanctot  
Charles Langenfeld  
Judy Laurie  
Richard Lawless  
Marguerite E. Leger  
Stephen Whitney Leonard  
Marvin Lerman  
Edward M. Libbin  
Marianne Herz Libbin  
Richard Lindahl  
Benjamin H. Lovell  
Catherine Bowles Lowell  
John Fulham Lucey  
Marie MacFarlane  
James A. MacGregor  
John D. Mack  
Rena Marks  
John Martini  
Dr. Fern Marx  
Nancy Masse  
George H. Mathiesen  
Beverly McCarthy  
Josephine Miller  
Russ Minkwitz

Kenneth A. Moon  
Betty Morgan  
Edward J. Morrier  
Francis "Pat" S. Moulton Jr.  
Helen Mullen  
Elinor "Nora" Muller  
Larry Murphy  
Stanley Murray  
Vicki Norberg-Bohm  
Thomas R. O'Neil  
Irene Osmond  
Betty Oxner  
Hugh "Pat" L. Patterson  
Joseph Pelchat  
Robert Pelletier  
Curtis C. Pfluger  
George R. Phaneuf  
Khristin L. Pickett  
Alice Pierce  
Edith M. Pineo  
Dr. Conrad Pirani  
Robert Plourde  
Polly Porter  
Hustace H. Poor  
Larry Powers  
Nancy Burton Prebble  
Grace Priest  
Joellen Rapee  
Robert Read  
Barbara A. Richmond  
Ruth H. Ridley  
Bert Roens  
Elizabeth H. Rogers  
Joseph Romanelli  
Ned Rosen  
Marlene Rothmann  
Valerie Rough  
Victor P. Ruby

Samuel H. Rush  
Alvah W. Sanborn  
Malcolm Sanders  
Eleanor Scarr  
Jennifer Schofield  
Harriet Schunder  
Mary-Edna Searing  
Albert Seauvegeau  
Edna Sherry  
Karen Faye Sinclair  
Albert R. Smith Jr.  
Erna W. Smith  
Mildred R. Smith  
Richard R. Smith  
Sadie Smith  
Ruth Witbeck Somerville  
P.B. Sparrow  
Eleanor D. Spilman  
Ellen Steen  
David W. Stemple

Ellen Aikenhead Stevens  
Barbara Streibert  
Elizabeth "Betty" Strong  
Richard Hudson Sutphin  
Frank R. Sweet  
Anne Swift  
Eleanor Symons  
Bruce B. Thrasher  
Mary Tindall  
Edith L. Tracey  
Mabelle Tucker  
Barbara Turnbull  
Kenneth H. Tuttle  
William A. Vail Jr.  
Roy Viklund  
Rena Walker

Connie Walsh  
Hugh Campbell Ward Jr.  
Lendell Warriner  
Esther & Lloyd Warshauer  
Virginia C. Washburn  
Frederic D. Weinstein  
John Winslow Willetts  
Mason Wilkins  
Beverly Knight Williams  
Donald L. Wogan  
Herbert & Lillian Wolfe  
Irving Scott Wolfe  
Sarah Wollaston  
Grace Womack  
Maimo Yllo  
Susie Zezza



*Sarah Neurath*

"When I was seven years old and a camper at Drumlin Farm, I started to appreciate and love nature. Last summer I was finally old enough to become a Leader-in-Training (LIT) at Wildwood overnight camp. The LIT program helped me to discover my love of working with kids and my leadership skills. Once I got home from camp, I started making plans with a friend to set up an environmental action club at my school. I want to be a counselor at Wildwood when I'm old enough; I just hope I can be as cool as the counselors who I looked up to."

*Sarah Neurath*, Lincoln, Massachusetts  
Wildwood Leader-in-Training program

## FISCAL YEAR 2006 SUPPORTERS *continued*

### BEQUESTS

Ruth H. Badger  
Florence S. Baker  
Mary J. Brown  
Dorothy Conkey  
Aina S. Cutler  
Jane M. D'Alessandro  
Eleanor D. De Nunno  
Dorothea Dodge  
Jane Gray Dustan  
Anne Fitz  
Constance Fuller  
Dorothy Garfein  
Ellen Hartnett  
Mary E. Hastings  
Louise Hatheway  
Pearl Henshaw  
Ruth Hervey  
Ruth N. Hollis  
Barbara Jack  
H. Holton Johnson  
Katharine P. Lanctot  
Spring Leonard  
Frances Loomis  
Katherine N. Lowe  
Elizabeth Mongan  
Francis "Pat" S. Moulton Jr.  
Elinor "Nora" Muller  
Ruth Packard  
Janet M. Parsons  
Barbara L. Petrie  
Mary E. Porter  
Harriet B. Prindle  
George E. Pulsifer  
Bridie Rielly  
Louise P. Romanoff  
Arthur P. Schrader  
Charlotte J. Smith

Phyllis W. Smith  
Ellen & Samuel Stevens  
Frederic B. Viaux  
Marion E. Wadsworth  
June G. Williams  
John M. Woolsey Jr.

### THE TERN SOCIETY

The following individuals have established a life income arrangement with Mass Audubon or have named the organization as a beneficiary in their will or estate.

Anonymous (38)  
Diana C.A. Abrashkin  
Barbara Risden Adams  
Nicholas Clapp Arguimbau  
Janet M. Aylward  
Priscilla H. Bailey  
Lolly Bennett  
Helen M. Bowdoin  
Sara H. Brydges  
Mr. & Mrs. Robert W. Carpenter  
Daniel D. R. Charbonnet  
Nancy Rideout Chisholm  
Modestino & Nancy Criscitiello  
Mr. & Mrs. Lewis S. Dabney  
Carolyn & David Dettinger  
Anne Rich Dewees  
Mr. & Mrs. Eugene Doggett  
Mr. & Mrs. David C. Donaldson  
Alys & Norman Dorian  
Anne Eberle  
Richard J. Erickson & Laurie S. Miles  
Merry & Ralph Eustis  
Lucy Fields  
Clare E. Forbes

Mr. & Mrs. Lester E. Forbes  
Elaine Foster  
Sara & Ed Foster  
John L. Freeman and Linda Lacki  
Robert L. French  
Terry Goplerud  
John W. Gintell  
Diane Asseo Griliches  
Sylvia Charman Guthrie  
Mr. & Mrs. Andrew C. Harvey  
C. Hayton  
Mary Hendricks  
John Hitchcock  
Charles W. Hubbard III  
Carol A.F. Jeffery  
Marianne & John Jeppson  
Beth & David Kimball  
Meribeth & John A. Klobuchar  
Jayne Rebello Korn  
Ann & Chester Kulisa  
Debora LaRoy  
Miriam Lasher  
Bruce & Lois Lessard  
Ruth Joann Levine  
Martha G. Locke  
Dunbar<sup>1</sup> & Irene Lockwood  
Anne S. Lombard  
Lucile Longview  
Clara R. Ludwig  
John W. Lynes  
Marilyn & Don Malpass  
Elspeth E. Matkovich  
David Matis  
Kathleen M. Morehead  
Francis S. Moulton Jr.<sup>2</sup>  
Barbara Munkres  
Pam Musk  
Edmund W. & Mary H. Nutting  
Jonathan & Jessie Panek

Mary & Rienzi Parker  
Esther B. Pelletier  
Robert & Veronica Petersen  
Ina & Mason Phelps  
Katharine S. Plimpton  
Anne C. Porter  
George E. Pulsifer<sup>1</sup>  
Chandler S. Robbins  
Reverend Lois F. Rose  
Robert Saltonstall  
Barry & Libby Schiller  
Peter & Naomi Schmidt  
Judith L. Schotland  
Sven E. Siemen  
Evelyn B. Silver  
Virginia & Harry Sprong  
Diana Squires  
Jose Ann Steinbock<sup>1</sup>  
John L. Thorndike  
Patricia A. Thornton  
Marty & Julie Touchette  
Marcia Wade & David Officer  
Mrs. William E. Walker  
Stephen L. Wasby  
Sarah S. Webb  
Bill & Bobbi Whiting  
Emily & Kenneth Wolf  
Charlotte Wyman  
Gerald Zecher

### VOLUNTEERS

The following individuals have generously given 250 or more hours of their time this year to assist Mass Audubon in accomplishing our mission.

Bill Allan  
Dan Armenti

Jacy Armenti  
Roger Backman  
Janet Bissell  
Cyndy Bourquard  
John Bowe  
Jesse Brownback  
Sara Brydges  
C. John Burk  
Betty Chelmow  
Kathy Clayton  
Nancy Coburn  
Carlene Crummett  
Helen Daniels  
Janet DiMattia  
Gwen Dods  
Tessa Dowling  
Zara Dowling  
Lisa Ferree  
Dick French  
Robert French  
Lee Garvais  
Margie Gibbs  
Allan C. Greenberg  
Anne Groth  
Mary Hall  
Danielle Hanrahan  
William Hobbie  
Doris Holden  
Barbara Hollis  
Hanna Hopp  
Paul Jackson  
Dara Johnson  
Anne Keppler  
Debora LaRoy  
Miriam Lasher  
Joe Lawler  
James Levey  
Joanne Levey

Anne S. Lombard  
Howard Losea  
Don Manchester  
Fred Martins  
Mike McWade  
Jim Meckel  
Ellen Mintzer  
Chris Murphy  
Tom Nahorniak  
Connie Parks  
Clivia Pasek  
Anne Patterson  
Anne Pearson  
Ganson Purcell  
Peter Redfern  
Maynard Rinker  
Dorothy Rocklin  
Dan Russell  
Charlie Ryan  
Jeffrey Saraceno  
Janice Schlickman  
Dietrich Schlobohm  
Phyl Solomon  
Kristin Steinmetz  
Robert Tanguay  
Dan Tucker  
Kirk Vaughn  
David Weaver  
Peg Weisker  
Strickland Wheelock  
Carolyn Whipple  
Marc White  
Ron Woodland  
Vincent Zolo



## Mass Audubon Board of Directors

### CHAIR

Franz Colloredo-Mansfeld

### VICE CHAIRS

Alfred D. Chandler III

James N. Levitt

Jonathan Panek

### PRESIDENT

Laura A. Johnson

### CORPORATE SECRETARY

Kristin M. Barr

### ASSISTANT

### CORPORATE SECRETARY

Elaine Kile

### TREASURER

Simon (Chip) Walker

### ASSISTANT TREASURERS

Gary R. Clayton

Nora Frank

Bancroft R. Poor

### DIRECTORS

Diane Arseneau

Walter (Jerry) Bird

Alfred D. Chandler III

Jennifer Charles

Jared Chase

Richard Chute

William Coady

Franz Colloredo-Mansfeld

Nina Doggett

Scott V. Edwards

Thomas D. French

Thaddeus Gillespie

Terilyn A. Henderson

Nora F. Huvelle

Christopher Klem

Erik Knutzen

James N. Levitt

George Cabot Lodge Jr.

Ronald P. O'Hanley

Jonathan Panek

Jeffrey F. Peters

John Riehl

Judy A. Samelson

Edgar Schein

James Sperling

Brooke Stevens

Simon (Chip) Walker

### COUNCIL

Christopher Abbott

Kathleen S. Anderson\*

Priscilla Bailey

James Baird

Robert Ball

Chris Barker

Frank Bradley

Fred Brink

Anne Brooke\*

Brian A. Brooks\*

Elise R. Browne

George Butterworth\*

Charles C. Cabot III

Jeffrey M. Collins

George T. Comeau

Hamilton Coolidge\*

John D. Cunningham III

Lewis S. Dabney\*

Thomas P. Daly

Thomas A. DeMarco III

Richard A. Dimino

Eugene B. Doggett\*

Mrs. Alexander Ellis\*

Alexander Ellis III

Barbara E. Fargo\*

Charles H. Fargo\*

Carlos M. Ferrè

Marjorie M. Findlay

Richard T. T. Forman

John C. Fuller\*

Ayla Gavins

Cyrus F. Gibson

John Green\*

Lynn Harvey

Charles L. Hill

Deborah V. Howard\*

James Hoyte

Malcolm W. Johnston

Gillian S. Kellogg

Samuel B. Knight

John Kricher

Daniel W. Latimore

Virginia M. Lawrence

Edwin F. Leach II

John A. Lechner IV

Anne Lewis

Donald Lewis

Thomas S. Litwin

Merloyd L. Ludington\*

D. Lloyd Macdonald, Esq.

William P. Madar

Kate McCarey

A. Rives McGinley

Bernard J. McHugh

Tim McKenna

Edward J. McNierney

Shirley M. Muirhead-Jenkins\*

Beatrice J. Nessen

Virginia L. Nicholas

Timothy Noyes

J. David Officer\*

George Pendergast

Patricia T. Poitras

Stephen D. Poss

Helen Pounds

George Putnam III\*

Edward H. Raymond\*

Mary Lou Roberts

Walter Rosenfeld\*

Doug Sacra

Mary Schein

David Sibley

Phyllis Solomon

Lee Spelke\*

Dean H. Steeger

David Straus

Chris Sumner

Antony Swartz-Lloyd

Deborah Swenson

Jeffrey Swope

Alexander L. Thorndike

John L. Thorndike\*

Patricia Thornton\*

Mrs. Richard D. Thornton\*

Elizabeth Valentine\*

Elizabeth Vizza

William T. Wachenfeld

Mrs. Jephtha H. Wade\*

Thomas T. Warren\*

Stanley Washington

Nancy Weiss\*

Virginia Welles

Marcus White

Alan Wilson\*

Bryan Windmiller

Frederic Winthrop II

Julia Yoshida

Lawrence W. Zuelke\*

\* = *Honorary Director*

### HONORARY DIRECTORS

Robert C. Baron

Eric Cutler

Richard Emmet

Dr. Robert L. French

Henry Lee

Edward B. Long

Mrs. George M. Lovejoy Jr.

Deborah W. Moses

John F. O'Connor

Lewis H. Parks

Herbert W. Pratt

David Starr

David Walsh

Mass Audubon works to protect the nature of Massachusetts for people and wildlife. Together with more than 100,000 members, we care for 32,000 acres of conservation land, provide educational programs for 200,000 children and adults annually, and advocate for sound environmental policies at the local, state, and federal levels. Mass Audubon's mission and actions have expanded since our beginning in 1896 when our founders set out to stop the slaughter of birds for use on women's fashions. Today we are the largest conservation organization in New England. Our statewide network of 43 wildlife sanctuaries welcomes visitors of all ages and serves as the base for our conservation, education, and advocacy work. To support these important efforts, call 800-AUDUBON (283-8266) or visit [www.massaudubon.org](http://www.massaudubon.org).

### PHOTOGRAPHY:

#### Cover photos

Girls strolling & Boys smiling: Shawn Carey/  
[migrationproductions.com](http://migrationproductions.com)

Morning hike: © Jerry and Marcy Monkman/  
[EcoPhotography.com](http://EcoPhotography.com)

Plover chick: © John Van de Graff

Birders: © Budd Titlow/NATUREGRAPHS

Sunset: Ted Clark

#### Inside

Boy with net (inside front cover): Amy Buglass

Oak tree (p. 2): Kathy Sferra

Teen ambassadors (p.3): Ted Clark

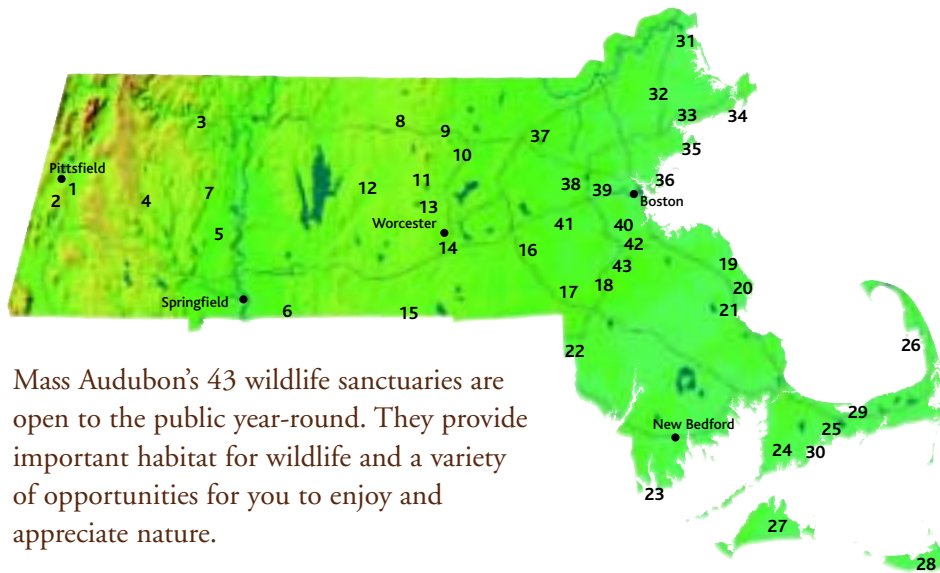
Austin Brown (p. 4): Nora Frank

Baltimore oriole (p.5): © Rob Kipp

Great spangled fritillary (p. 6): Marj Rines

Roseate tern (p. 6): © Jim Fenton

Kids at Oak Knoll (p. 7): Sara Slack



Mass Audubon's 43 wildlife sanctuaries are open to the public year-round. They provide important habitat for wildlife and a variety of opportunities for you to enjoy and appreciate nature.

#### BERKSHIRES

1. Canoe Meadows, Pittsfield
2. Pleasant Valley, Lenox

#### CONNECTICUT RIVER VALLEY

3. High Ledges, Shelburne
4. Road's End, Worthington
5. Arcadia, Easthampton and Northampton
6. Laughing Brook, Hampden
7. Graves Farm, Williamsburg and Whately

#### CENTRAL MASSACHUSETTS

8. Lake Wampanoag, Gardner
9. Flat Rock, Fitchburg
10. Lincoln Woods, Leominster
11. Wachusett Meadow, Princeton
12. Cook's Canyon, Barre
13. Eagle Lake, Holden
14. Broad Meadow Brook, Worcester
15. Pierpont Meadow, Dudley

#### SOUTH OF BOSTON

16. Waseeka, Hopkinton
17. Stony Brook, Norfolk
18. Moose Hill, Sharon
19. North River, Marshfield
20. Daniel Webster, Marshfield
21. North Hill Marsh, Duxbury
22. Oak Knoll, Attleboro
23. Allens Pond, Dartmouth

#### CAPE COD AND THE ISLANDS

24. Ashumet Holly, Falmouth
25. Skunknett River, Barnstable
26. Wellfleet Bay, Wellfleet
27. Felix Neck, Edgartown
28. Sesachacha Heathlands, Nantucket
29. Long Pasture, Barnstable
30. Sampsons Island, Barnstable

#### NORTH OF BOSTON

31. Joppa Flats, Newburyport
32. Ipswich River, Topsfield
33. Endicott, Wenham
34. Eastern Point, Gloucester
35. Marblehead Neck, Marblehead
36. Nahant Thicket, Nahant
37. Nashoba Brook, Westford

#### GREATER BOSTON

38. Drumlin Farm, Lincoln
39. Habitat, Belmont
40. Boston Nature Center, Mattapan
41. Broadmoor, Natick
42. Blue Hills Trailside Museum, Milton
43. Visual Arts Center, Canton



208 South Great Road • Lincoln, Massachusetts 01773

Address Service Requested

Non-Profit Org.  
U.S. POSTAGE  
**PAID**  
Boston, MA  
PERMIT NO. 56881