


Massachusetts Audubon Society  
 Long Range Phragmites Study  
 Location: CONOMO POINT, ESSEX

**Transect 0, Conomo Point**  
 Observers

Pre rest 06 Post rest 07  
 5 8  
 ave 06 6  
 ave 03 07

**SPECIES**

2001 is first year post restoration 2006 Duff and Gr. 6  
 2004 Duff and gr 6 11/4/04 2007 Duff and Gr. 6  
 2005 Duff & Gr. 6 2009 Duff 9/23/09

		Ditch 1 METER SEGMENTS																									# of intervals present in	
		upland end	1	2	3	4	5	6	7	8	9	10	11	12	13	14	15	16	17	18	19	20	21	22	23	24		25
<i>Phragmites</i>	2002	1	1	1	1	1	1	1	1	1																		8
<i>Phragmites australis</i>	2003	1	1	1	1	1	1	1	1	1																		8
	2004	1	1	1	1	1	1	1	1	1																		8
	2005	1	1	1	1	1	1	1	1	1																		8
	2006	1	1	1	1	1	1	1	1	1	1	1																9
 is immature	2007	1	1	1	1	1	1	1	1	1	1	1	1	1	1	1	1	1	1	1	1	1	1	1	1	1	1	10
	2008	1	1	1	1	1	1	1	1	1	1	1	1	1	1	1	1	1	1	1	1	1	1	1	1	1	1	10
	2009	1	1	1	1	1	1	1	1	1	1	1	1	1	1	1	1	1	1	1	1	1	1	1	1	1	1	10
	2010																											0
Spike Grass	2002					1	1	1	1	1									1	1	1	1	1	1	1	1	1	13
<i>Distichlis spicata</i>	2003					1	1	1	1					1				1	1	1	1	1	1	1	1	1	1	13
	2004						1	1										1	1	1	1	1	1	1	1	1	1	11
	2005																	1	1	1	1	1	1	1	1	1	1	9
	2006																			1	1	1	1	1	1	1	1	7
	2007																			1	1	1	1	1	1	1	1	8
	2008																					1	1	1	1	1	1	4
	2009																1	1	1	1	1	1	1	1	1	1	1	11
	2010																											0
Salt Marsh Hay	2002					1	1	1	1	1	1	1	1	1	1	1	1	1	1	1	1	1	1	1	1	1	1	17
<i>Spartina patens</i>	2003					1	1	1	1	1	1	1	1	1	1	1	1	1	1	1	1	1	1	1	1	1	1	20
	2004					1	1	1	1	1	1	1	1	1	1	1	1	1	1	1	1	1	1	1	1	1	1	20
	2005					1	1	1	1	1	1	1	1	1	1	1	1	1	1	1	1	1	1	1	1	1	1	20
	2006					1	1	1	1	1	1	1	1	1	1	1	1	1	1	1	1	1	1	1	1	1	1	21
	2007					1	1	1	1	1	1	1	1	1	1	1	1	1	1	1	1	1	1	1	1	1	1	19
	2008					1	1	1	1	1	1	1	1	1	1	1	1	1	1	1	1	1	1	1	1	1	1	19
	2009					1	1	1	1	1	1	1	1	1	1	1	1	1	1	1	1	1	1	1	1	1	1	17
	2010																											0
Seaside Goldenrod	2002																							1	1			2
<i>Solidago sempervirens</i>	2003																							1	1	1	1	3
	2004																							1	1	1	1	4
	2005																								1	1	1	2
	2006																							1	1	1	1	4
	2007																										1	1
	2008																										1	1
	2009																							1	1	1	1	4
	2010																											0

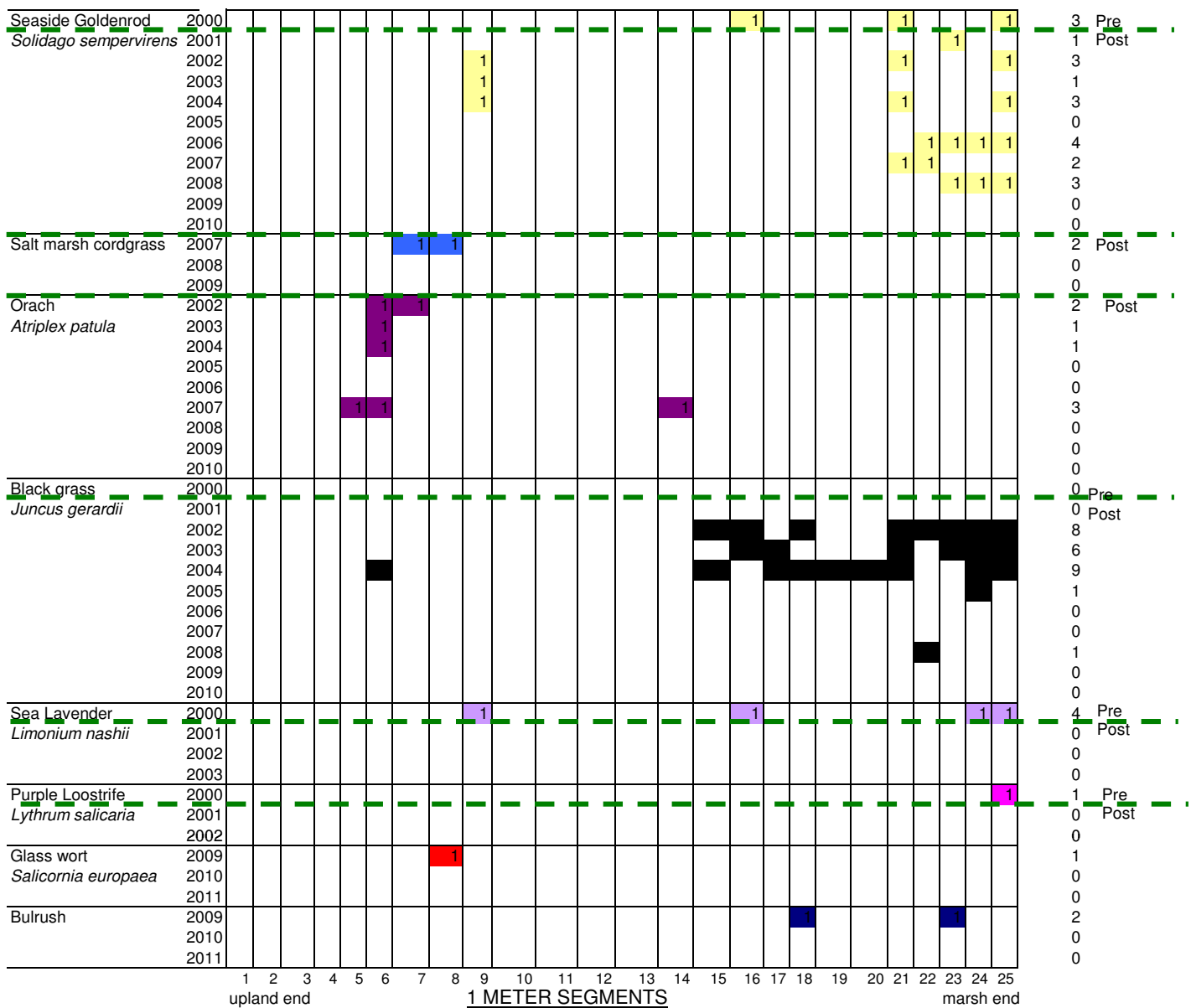
2001 with Harnish.







		upland end																										
		1	2	3	4	5	6	7	8	9	10	11	12	13	14	15	16	17	18	19	20	21	22	23	24	25	# of intervals	present in
<i>Phragmites</i>	2000	1	1	1	1	1	1	1	1																		9	Pre
<i>Phragmites australis</i>	2001	1	1	1	1	1	1	1	1																		8	Post
	2002	1	1	1	1	1	1	1	1																		7	
	2003	1	1	1	1	1	1	1	1	1																	7	
	2004	1	1	1	1	1	1	1	1	1																	8	
ia immature	2005	1	1	1	1	1	1	1	1	1																	8	
	2006	1	1	1	1	1	1	1	1	1																	8	
	2007	1	1	1	1	1	1	1	1	1																	7	
	2008	1	1	1	1	1	1	1	1	1																	7	
	2009	1	1	1	1	1	1	1	1	1																	7	
	2010																										0	
Spike Grass	2000									1	1	1	1	1	1	1	1	1	1	1	1	1	1	1	1	1	14	Pre
<i>Distichlis spicata</i>	2001				1	1	1	1	1	1	1	1	1	1	1	1	1	1	1	1	1	1	1	1	1	1	20	Post
	2002				1	1	1	1	1	1	1	1	1	1	1	1	1	1	1	1	1	1	1	1	1	1	21	
	2003				1	1	1	1	1	1	1	1	1	1	1	1	1	1	1	1	1	1	1	1	1	1	18	
	2004				1	1	1	1	1	1	1	1	1	1	1	1	1	1	1	1	1	1	1	1	1	1	18	
	2005				1	1	1	1	1	1	1	1	1	1	1	1	1	1	1	1	1	1	1	1	1	1	17	
	2006				1	1	1	1	1	1	1	1	1	1	1	1	1	1	1	1	1	1	1	1	1	1	11	
	2007																										5	
	2008																										6	
	2009																										6	
	2010																										0	
Salt Marsh Hay	2000																										0	Pre
<i>Spartina patens</i>	2001																										20	Post
	2002				1	1	1	1	1	1	1	1	1	1	1	1	1	1	1	1	1	1	1	1	1	1	21	
	2003				1	1	1	1	1	1	1	1	1	1	1	1	1	1	1	1	1	1	1	1	1	1	21	
	2004				1	1	1	1	1	1	1	1	1	1	1	1	1	1	1	1	1	1	1	1	1	1	21	
	2005				1	1	1	1	1	1	1	1	1	1	1	1	1	1	1	1	1	1	1	1	1	1	20	
	2006				1	1	1	1	1	1	1	1	1	1	1	1	1	1	1	1	1	1	1	1	1	1	8	
	2007				1	1	1	1	1	1	1	1	1	1	1	1	1	1	1	1	1	1	1	1	1	1	16	
	2008				1	1	1	1	1	1	1	1	1	1	1	1	1	1	1	1	1	1	1	1	1	1	15	
	2009				1	1	1	1	1	1	1	1	1	1	1	1	1	1	1	1	1	1	1	1	1	1	12	
	2010																										0	
Bare (Water)	2004																										0	Post
	2005									90%	100%	90%	60%	30%													5	
	2006									100	100	100	100	100													5	
	2007									100	100	100	100	100													5	
	2008									100	100	100	100	100	40	100	100	95	30	90	100	100	40	20			16	
	2009									100	100	100	100	100	40	100	100	95	30	90	100	100	40	20			12	
	2010																										0	

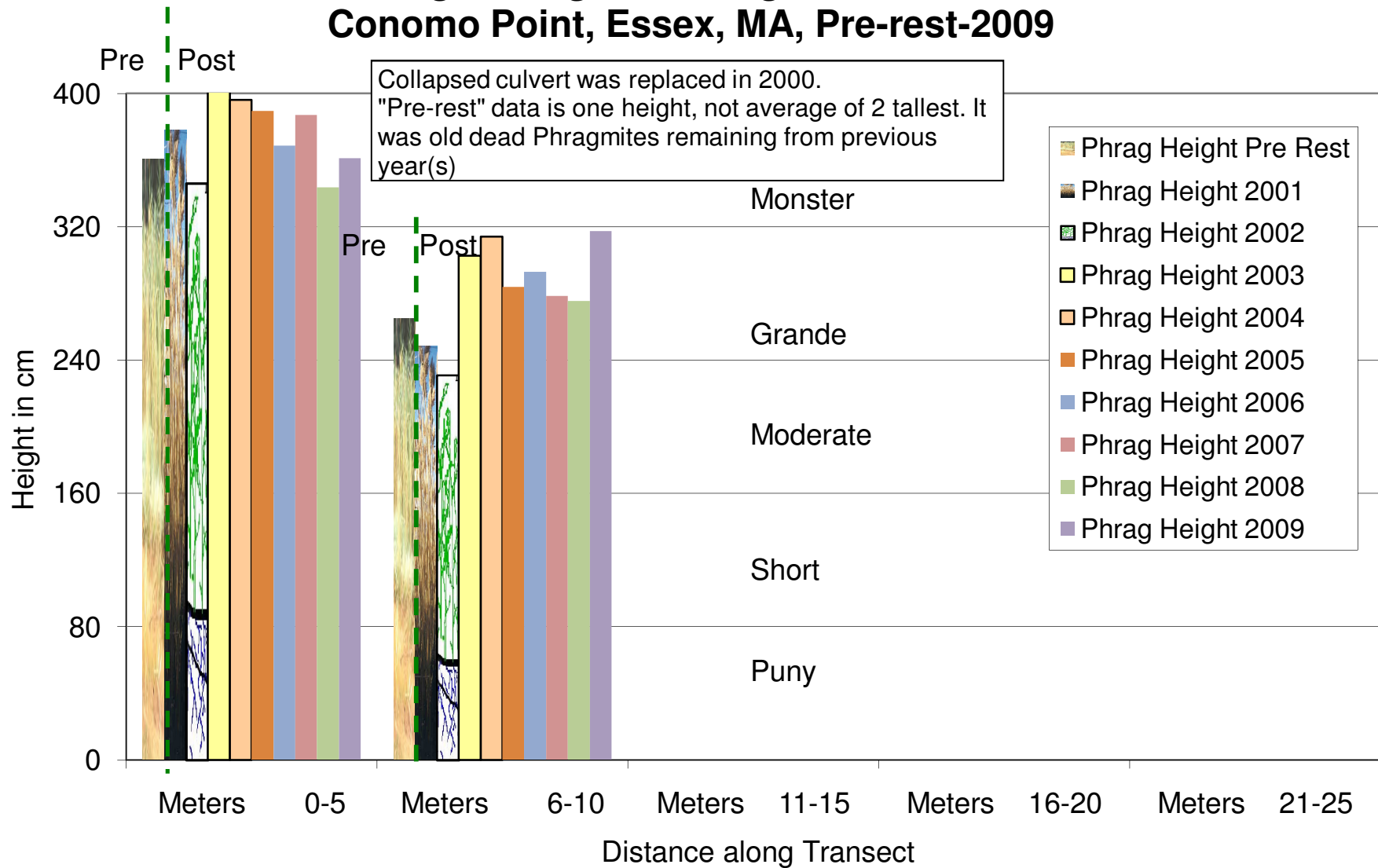


upland end 1 METER SEGMENTS marsh end

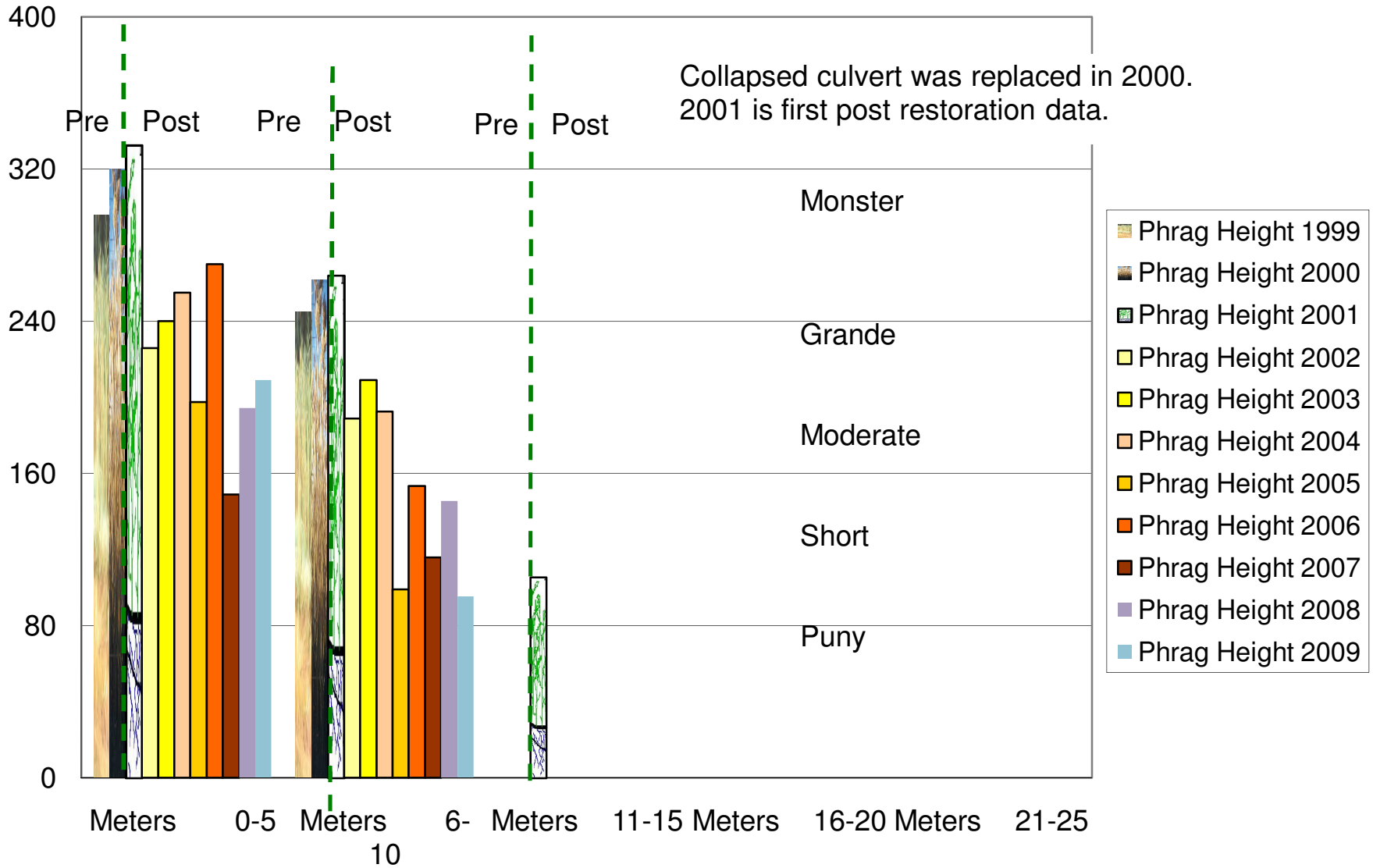




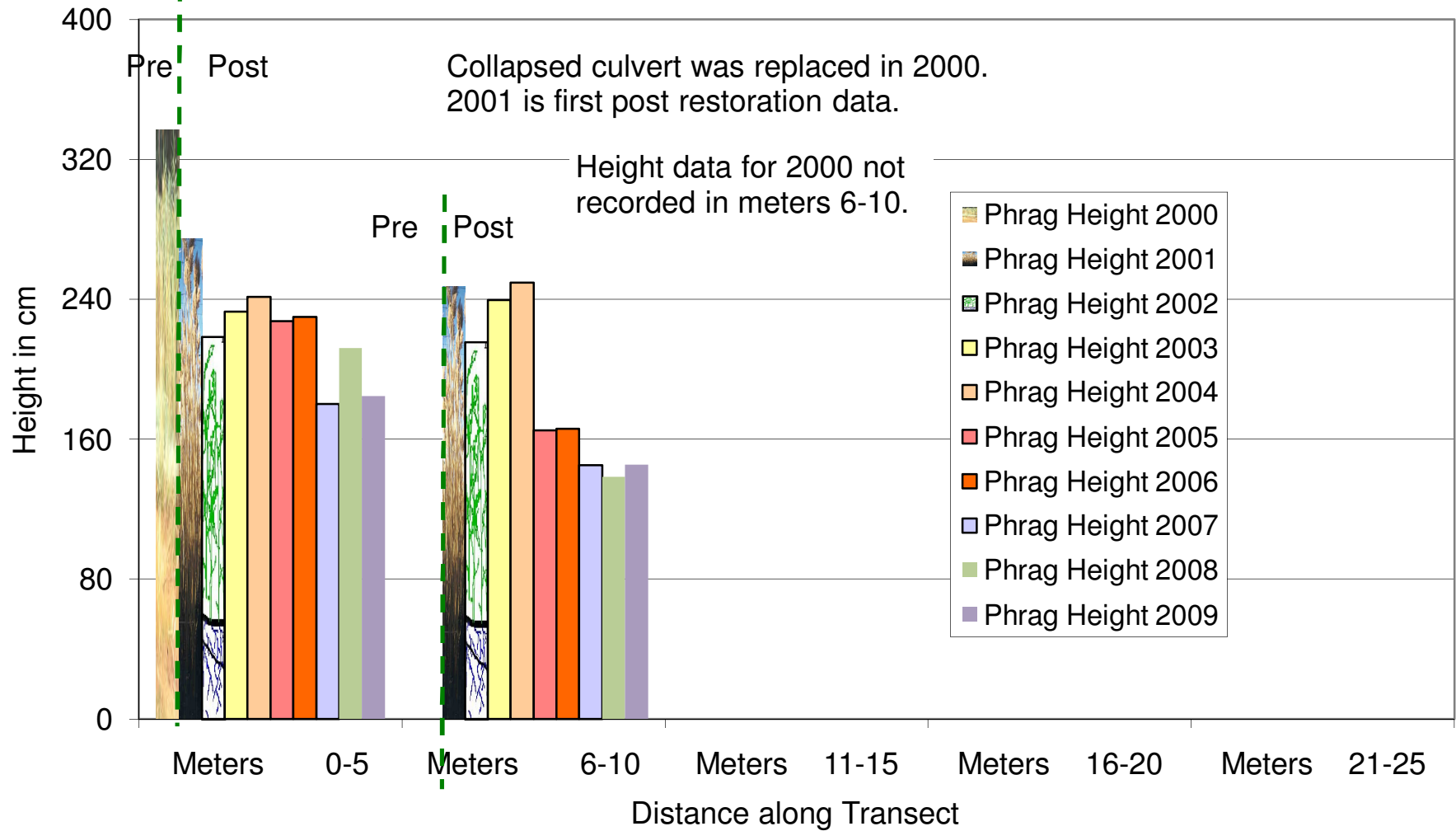
## Average *Phragmites* Heights, Transect 0, Conomo Point, Essex, MA, Pre-rest-2009



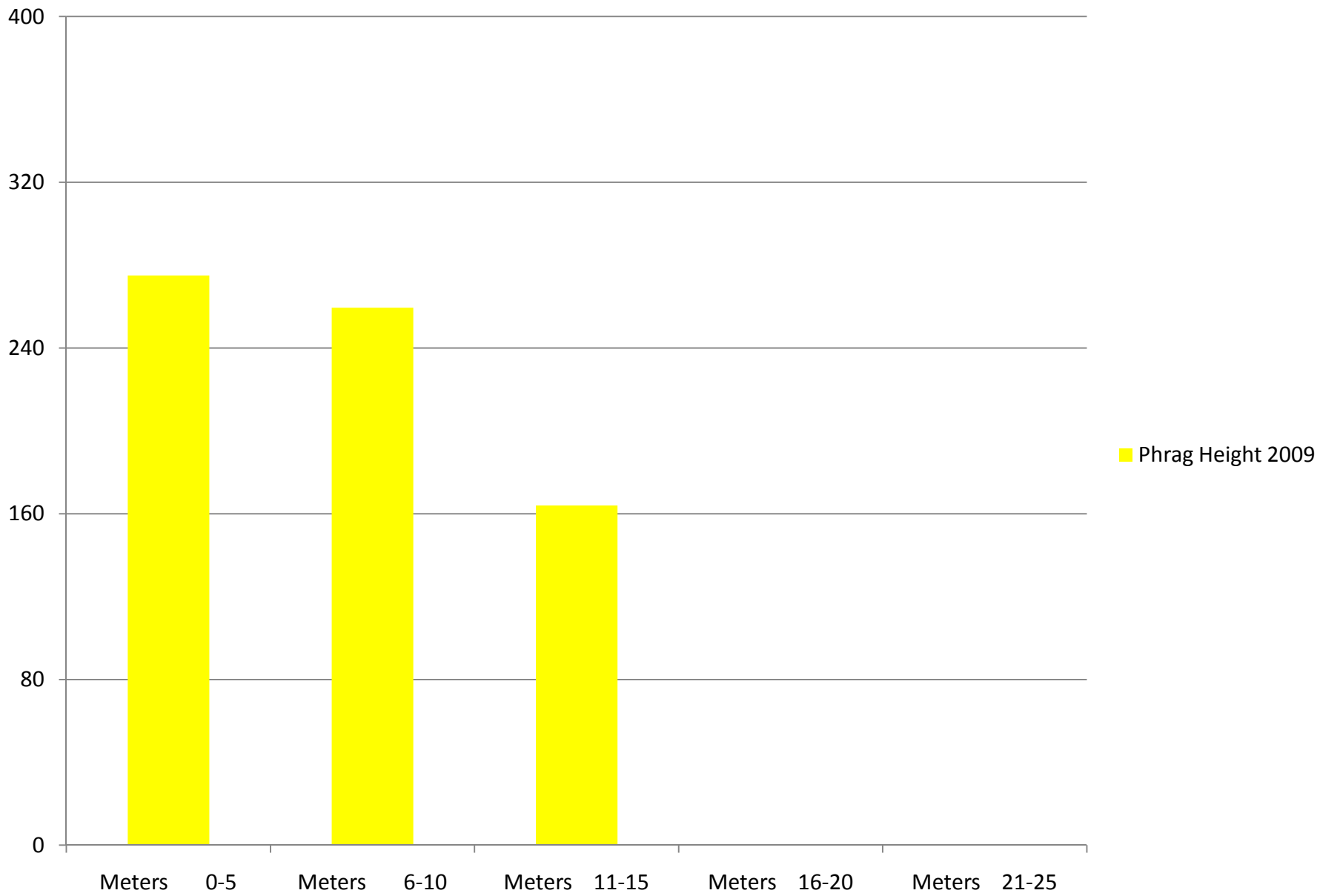
*Phragmites* Heights T1 Conomo Point Essex, MA 1999-2009



## Average *Phragmites* Heights, Transect 2, Conomo Point, Essex, MA, 2000-2009



**Transect 3 *Phragmites* Height 2009 Conomo Point Road, Essex**



**Transect 4 *Phragmites* Height 2009 Conomo Pt. Road Essex**

